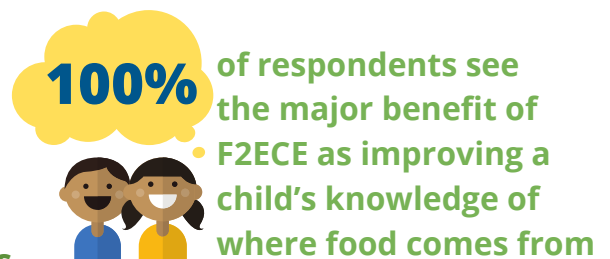
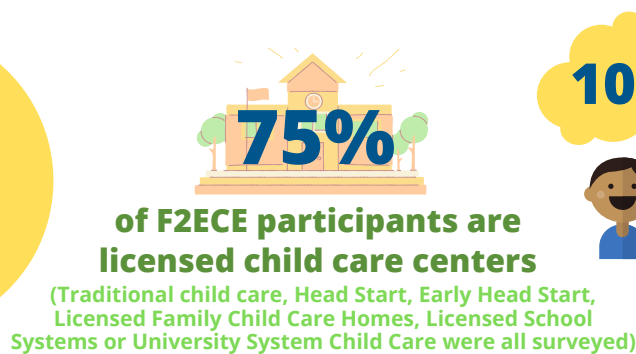
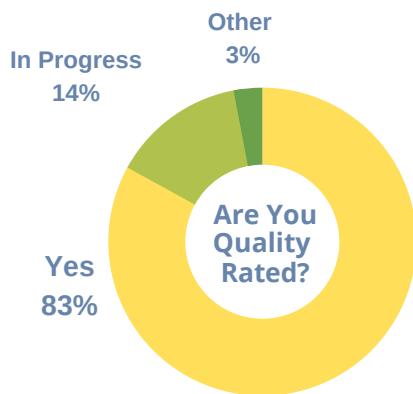
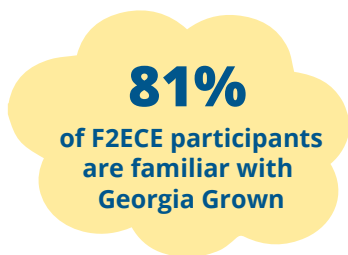
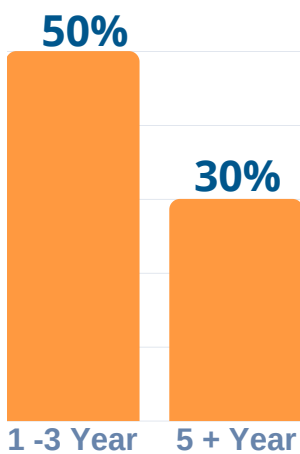


GA F2ECE





Georgia Farm to Early Care and Education



Length of F2ECE Participation



Opportunities for Collaboration

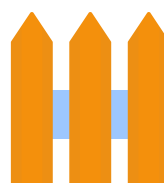
-  **97%** of F2ECE participants are CACFP providers
-  **60%** see F2ECE as a means of improving overall quality of their child care program
-  **60%** see F2ECE as a vehicle for increasing access and consumption of healthy, local Georgia foods
-  **50%** see F2ECE as a method for increasing program's connection to the community as well as improving child's overall health

Resources to Increase F2ECE



- More information about buying and preparing local foods
- F2ECE specific curriculum
- F2ECE 101 training for directors and staff

Barriers to F2ECE



- Lack of gardening space, staff time and/or capacity
- Lack of knowledge and funding
- Unsure of how to manage F2ECE
- Unsure of how to find, buy and prepare local food