



Inclusion and Behavior Support Program Mental Health Awareness Trainings (MHAT) Menu

To schedule DECAL MHAT training, contact GaDOE at

MHATScheduling@doe.k12.ga.us



Georgia Dept
of Early Care
and Learning

All webinars will be delivered in two 1.5 hour sessions



Relationships and Classroom Environment

Participants will explore relationship building and analyze how positive relationships impact positive behavior. They will acquire strategies to foster positive relationships with colleagues, families, and children. Participants will understand how the environment impacts behavior, and learn ways to build and support a positive classroom community.

Face to Face Format: 4 hours
Webinar Format: 3 hours



Tier 1: Schedules, Routines, Transitions, Rules & Expectations

Participants will describe the differences between schedules and routines and explain the importance of teaching and reinforcing the expectations within the classroom environment. Participants will acquire strategies for providing feedback to acknowledge children when they meet expectations.

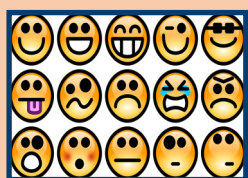
Face to Face Format: 6 hours
Webinar Format: 3 hours



Tier 2: Targeted Social Emotional Strategies

Participants will understand the importance of teaching social emotional skills and identify strategies to encourage the use of these skills by children. They will also explore the significance of helping children learn to control anger and impulses and identify strategies for teaching children problem solving skills.

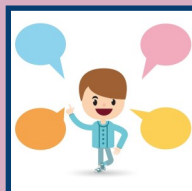
Face to Face Format: 6 hours
Webinar Format: 3 hours



Understanding Children's Social Emotional Development

Participants will define social emotional development and its impact on a variety of outcomes for children. They will also describe the impact of exclusionary discipline practices on children and families and identify state resources to support social emotional development in early learning environments.

Face to Face Format: 4 hours
Webinar Format: 3 hours



Behavior Communicates: Are You Listening?

Participants will define challenging behavior and other key terms related to behavior, intervention, and data. Participants will identify strategies and methods for collecting data within the classroom environment, identify strategies for visualizing, analyzing, and sharing data and describe interventions based on the data collected.

Face to Face Format: 4 hours
Webinar Format: 3 hours



Nurturing an Effective Workforce

Participants will describe a framework for addressing social emotional development and challenging behavior and identify strategies to address common challenges to evidence-based practices. They will identify effective leadership strategies including collaborative planning and professional development and apply strategies for improving children's social emotional and behavioral outcomes.

Face to Face Format: 6 hours
Webinar Format: 3 hours