

Georgia's Preschool Development Grant Birth to Five (PDG B-5)

Data Subgroup Committee Meeting

September 11, 2019

Welcome

Facilitators:

- **Susan Adams**, Deputy Commissioner for Georgia's Pre-K and Instructional Supports (DECAL)
- **Bentley Ponder**, Deputy Commissioner for Quality Innovations and Partnerships (DECAL)
- **Rob O'Callaghan**, Senior Research and Policy Analyst (DECAL)
- **Melinda Moore**, Carl Vinson Institute of Government
- **Theresa Wright**, Carl Vinson Institute of Government

PDG B-5 Overview

Georgia PDG B-5 Overview

In December 2018, Georgia was awarded a \$2.9 million Preschool Development Grant Birth Through Five (PDG B-5) from the U.S. Departments of Health and Human Services and Education.

The funds will be used to design and implement activities to help ensure that Georgia's children from birth to age 5 have **access to high-quality** early childhood care and education services and programs.

PDG B-5 Key Terms

Vulnerable

- Children at risk for not meeting developmental milestones or school readiness milestones

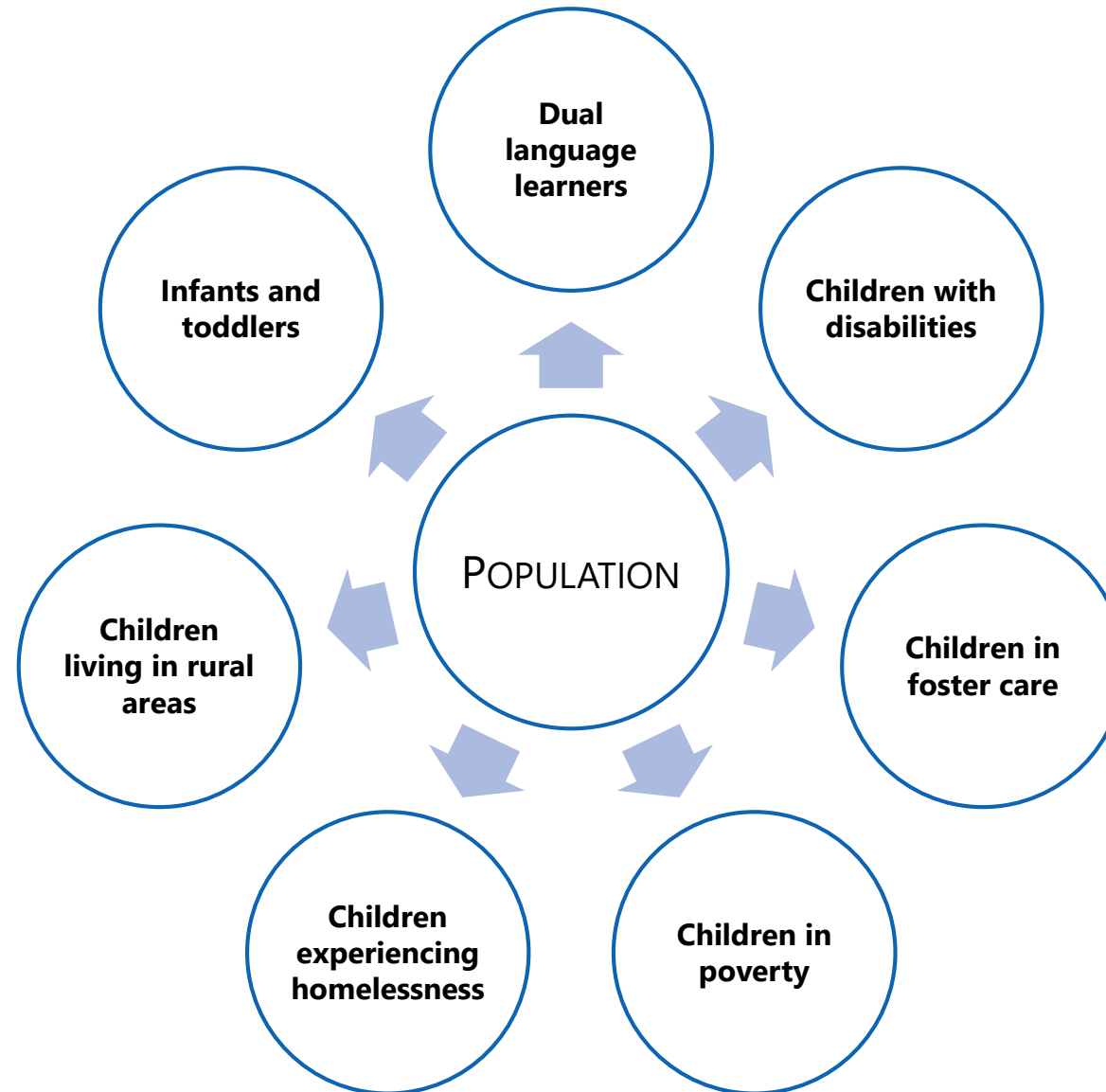
Underserved

- Children and families whose needs are not met by available services or who are not able to access existing services that meet their needs

Rural

- Children, including those from migrant families, who live in a county with a population of less than 50,000 or in an area designated as rural based on a military installation exclusion clause

Georgia PDG B-5 Focal Populations



Georgia PDG B-5 ECCE Services



PDG B-5 Activities



Needs Assessment



Strategic Plan



Maximizing Parental Choice and Knowledge



Sharing Best Practices

Needs Assessment: Background and Domains

Needs Assessment

- Complete a statewide needs assessment
 - Engage community partners, advocates, & local leaders to provide insight on current data
- Form Needs Assessment Advisory Committee
 - Form Data Subgroup
- Identify current ECCE and population cross-sector data and identify needs/gaps in the data
- Provide additional training to support personnel to understand data accurately and seamlessly

Data Subgroup

- Identified data and research leads from state agencies and partner organizations
- Focus on understanding the data
 - Sources
 - Definitions
 - Limitations
- Guide policy and program implementation staff in understanding data opportunities

Purpose and Use of the Needs Assessment

- Gather detailed information about the quality, availability and alignment of existing ECCE programs and services
- Identify gaps in quality, availability, and alignment of existing ECCE programs and services
- Serve as rationale for PDG strategic plan

Needs Assessment Domains

- 1 Definitions**
- 2 Focal populations**
- 3 Data on children served or awaiting service**
- 4 Quality & availability of ECCE**
- 5 Data & research gaps**
- 6 Quality & availability of programs & supports**
- 7 Measurable indicators of progress**
- 8 ECCE facility issues**
- 9 Barriers to funding & provision of ECCE & supports**
- 10 Transition supports & gaps**
- 11 Interagency collaboration**

Needs Assessment Domains

- 1 Definitions
- 2 **Focal populations**
- 3 Data on children served or awaiting service
- 4 **Quality & availability of ECCE**
- 5 **Data & research gaps**
- 6 **Quality & availability of programs & supports**
- 7 **Measurable indicators of progress**
- 8 ECCE facility issues
- 9 Barriers to funding & provision of ECCE & supports
- 10 **Transition supports & gaps**
- 11 Interagency collaboration

Data Captured by CACDS

	Pre-K	Head Start	CAPS	Children 1st	Babies Can't Wait	Preschool Special Education	Home Visiting
Age	✓	✓	✓	✓	✓	✓	✓
Gender	✓	✓	✓	✓	✓	✓	✓
Race/Ethnicity	✓	✓	✓	✓	✓	✓	✓
Home Language	♠	X	X	X	X	X	X
Disability	✓	X	✓	✓	✓	✓	X
Income	♠	♠	✓	X	X	X	X
Homeless	X	X	✓	X	X	X	X
Foster Care	X	X	✓	X	X	X	X
Address	♠	✓	✓	✓	✓	✓	✓

 Captured
  Proxy Captured
  Not Captured

Agenda

Agenda

Small Group Discussion (1 hour)

- Domains

Discussion/Report Out (30 minutes)

Next Steps (15 minutes)

Small Group Discussion

Small Group Discussion (1 hour)

- Each table has (3) domains for discussion
 - For each domain, please answer the following questions:
 - What data do we **have** for this domain?
 - What data do we **need** for this domain?
 - What is a **strength** of the data we have for this domain?
 - What are the **challenges** with the data we have for this domain?
 - What is your **ideal data point** for this domain?

Contact Us

General Questions:

Clayton Bassett

Preschool Development Grant Director

Desk: 470-451-8181

Mobile: 404-801-8393

clayton.bassett@decals.ga.gov

Data Subgroup:

Rob O'Callaghan

Senior Research & Policy Analyst

404-232-7967

rob.ocallaghan@decals.ga.gov