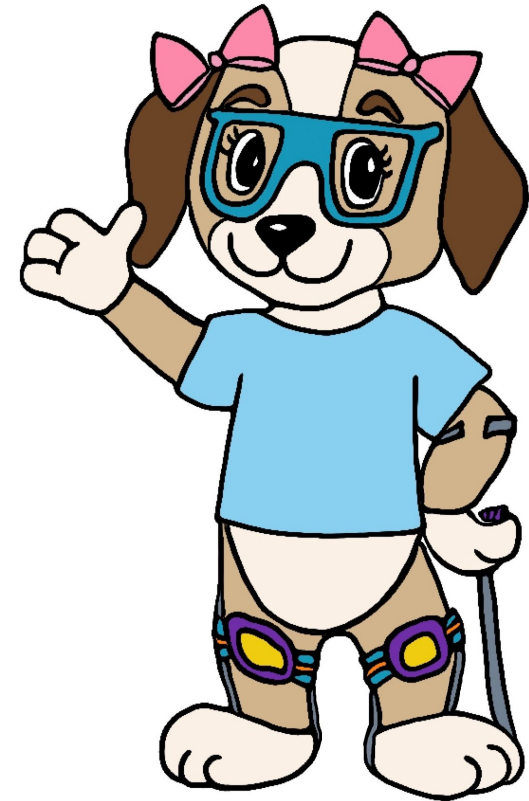


What is Inclusion?



A Social Story

By: Codi Wade Parham



Georgia Dept
of Early Care
and Learning



Inclusion:

to take in or to have as part of a whole group



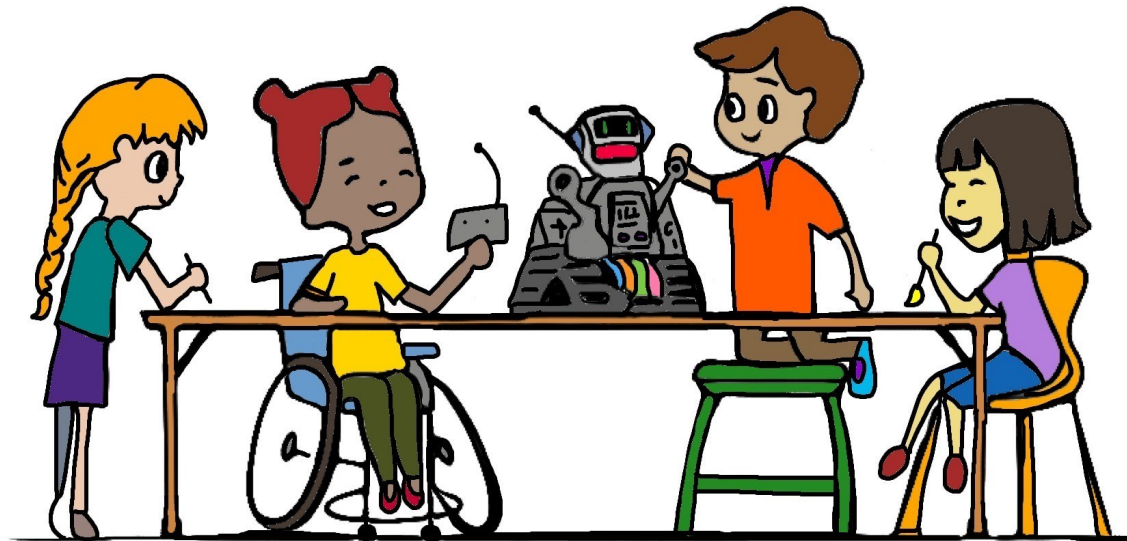
Inclusion means that **everyone**

can join in the fun...

in the same school, class, and activities!

Access:

to be able to use, enter, or get near



Access means that **everyone**
gets to play **together!**

Participation

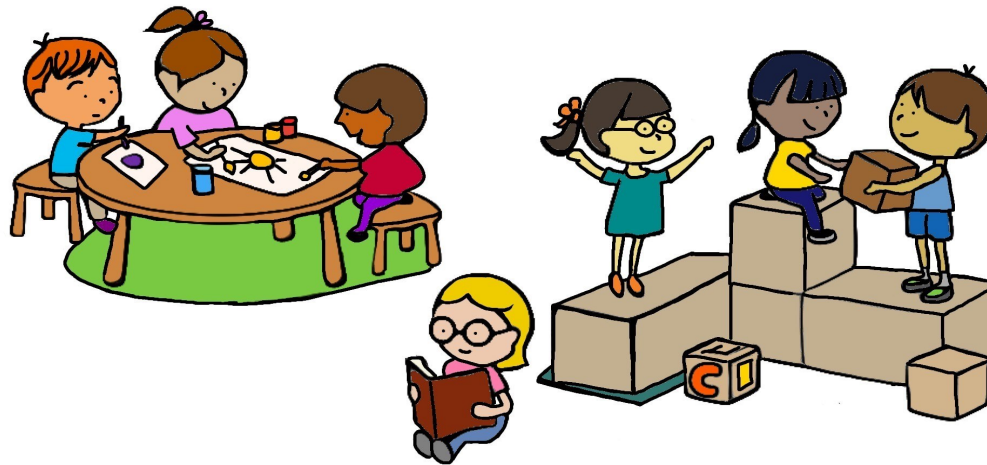
the act of joining with others in doing something



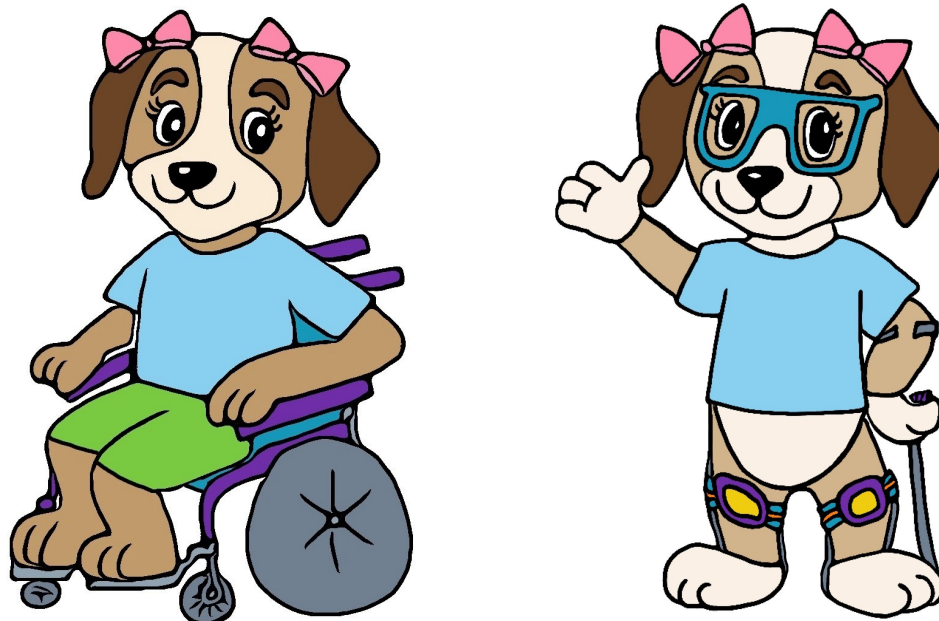
Participation means that each person can join **every** activity with their friends.

Support

to provide help or encouragement



Support means that **everyone** has the help they need so they can learn in the way that is best for their own unique brain.



Some people have supports or tools for
needs we can see,
like the need to wear glasses or
the need to use a wheelchair.



Some people have supports for
needs we do not see,
like the need to move and fidget, quiet spaces to
focus, or extra help learning how to calm down.



Everyone needs different things in order
grow and learn.

I can be a super friend by being patient and kind
when my friend has needs that are different than mine.