

▶ STUDY AT A GLANCE

Economic Impact *of the* Early Care and Education Industry *in Georgia*



WHAT'S INSIDE?

- Industry at a Glance
- Economic Impact
- Industry Perspectives
- Industry Comparison
- How You Can Help



REVISED JUNE 2016

Industry Survey

Determining Economic Impact

Early Care and Education at a Glance

The child care industry in Georgia serves children of all backgrounds and cares for an estimated **337,024 children** each year. The data acquired through a survey of child care providers conducted for this study present a profile of the industry in Georgia as well as the children they serve.

Georgia has approximately 6,200 licensed or regulated for-profit and not-for-profit early care and education providers.



Centers and family child care homes serve children of need: 36.6% of children in centers and 68.9% of children in school-based programs receive meals subsidized through federal food assistance programs.



More than 75% of providers operate 12 months per year; 10.9% of family child care homes and 2.8% of centers offer weekend care, while larger percentages (20.6% and 7.7%, respectively) offer evening care.



The industry is serving more than 143,000 children ages birth through three years, over 118,000 four-year-olds, and almost 75,000 school-age children (5 to 13 years).



The average weekly parent fees for infants in family child care homes range from \$91 (rural) to \$127 (urban). Among centers, the average ranges from \$99 (rural) to \$161 (urban).



Economic Snapshot

GEORGIA'S EARLY CARE
AND EDUCATION
INDUSTRY GENERATES

\$4.7
BILLION

OF ECONOMIC
ACTIVITY ANNUALLY

EMPLOYMENT AND
SPENDING GENERATES

\$161.7
MILLION

IN STATE AND
LOCAL TAXES

GROSS INDUSTRY
RECEIPTS TOTAL

\$2.45
BILLION

◀ OPEN for full economic impact results



“Investing in early childhood education helps lay a solid foundation for life-long learning among today’s children, who will become tomorrow’s workforce in Georgia.”



“This study definitely illustrates the importance of the early education industry in Georgia and the substantial economic impact it has on our state.”



“Transforming Georgia’s educational system starts with our youngest citizens. Early learning prepares children for success, reinforces our future economic competitiveness, and supports Georgia’s current workforce development strategies.”



“Quality early childhood education is an important investment for Georgia’s communities. It supports a healthy future economy by preparing kids to succeed later in life, while enabling parents and caregivers to work.”



ANNUAL
GROSS INDUSTRY
RECEIPTS

\$2.45
BILLION



ADDITIONAL ECONOMIC
ACTIVITY ASSOCIATED
WITH INDUSTRY

\$2.24
BILLION

PARENTS' ANNUAL
EARNINGS SUPPORTED
BY THE AVAILABILITY
OF CHILD CARE

\$24
BILLION



EARLY CARE
AND EDUCATION
PROVIDES

67k+
INDUSTRY JOBS

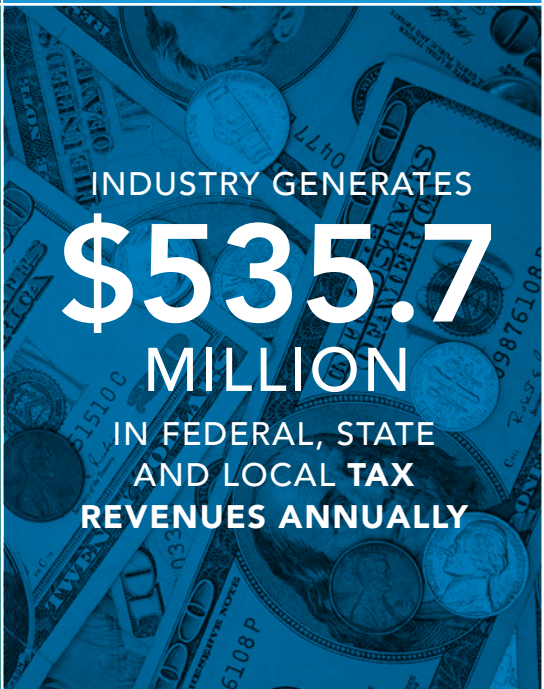
\$4.7
BILLION
TOTAL ANNUAL
ECONOMIC IMPACT
FOR GEORGIA



INDUSTRY
PROVIDES CARE
FOR AN ESTIMATED
337,024
CHILDREN
EACH YEAR



OVER
17,000
ADDITIONAL
JOBS IN OTHER
MARKET SEGMENTS

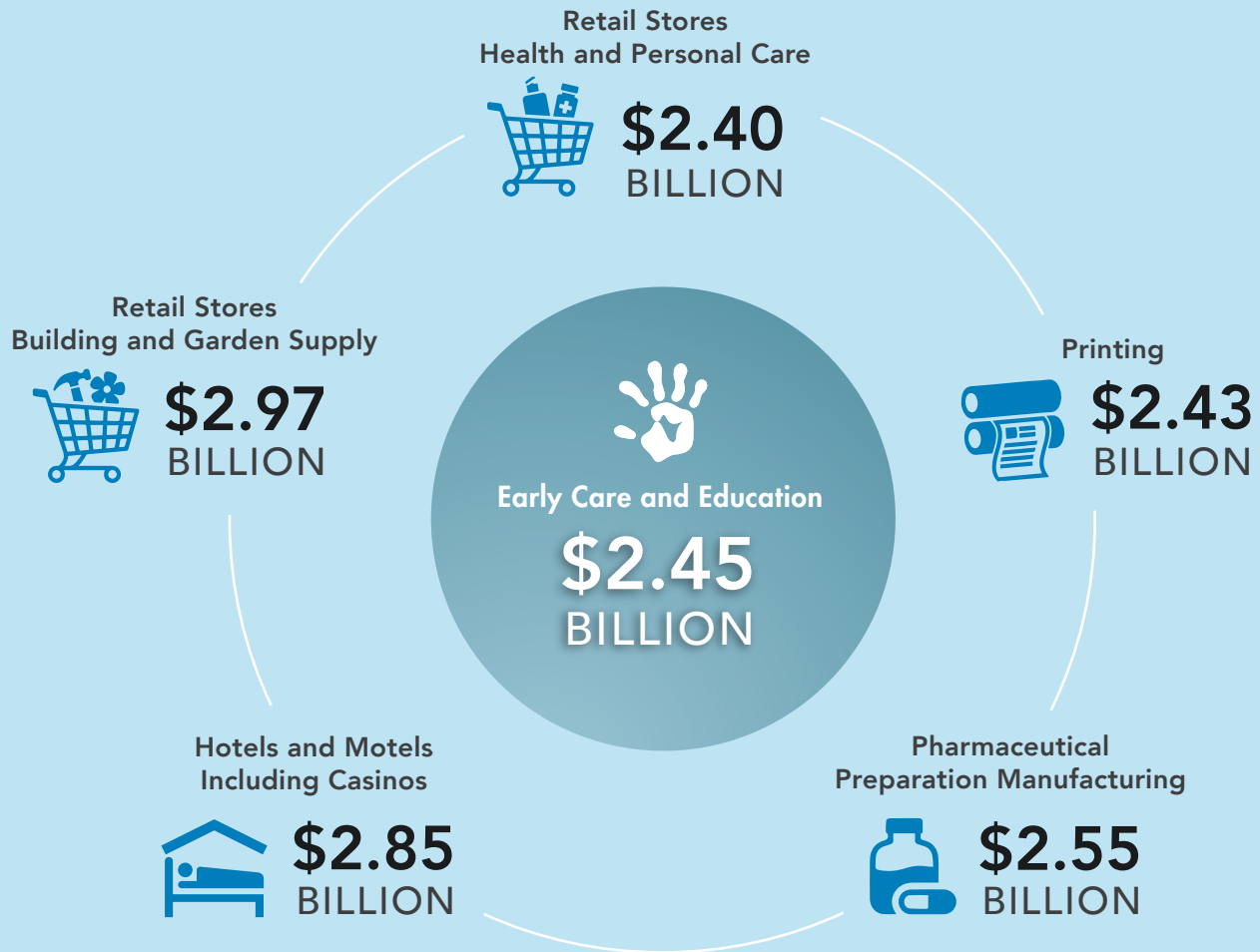


INDUSTRY GENERATES
\$535.7
MILLION
IN FEDERAL, STATE
AND LOCAL TAX
REVENUES ANNUALLY



MORE THAN
6,000
PROVIDERS
SERVING GEORGIA
FAMILIES

Industry Comparison



How You Can Help

This study reveals the strong role that early education plays in **Georgia's economy**. Not only is early education vital to the state's **economic well-being**, it also **supports parents** with their child care needs so they are able to work, and the industry **prepares children** educationally for the demands of a **21st century economy**.

You can help by **spreading the word** about the importance of this industry and the need for high-quality care. You can also help by **urging providers** in your communities to enroll in **Quality Rated**, Georgia's community-powered child care rating system, and encouraging families to look for **Quality Rated providers**. The greater the access families have to high-quality care, **the stronger the impact**.

This report is a collaborative effort between the University of Georgia and Georgia State University. For two years, researchers from GSU's Andrew Young School of Policy Studies and UGA's Carl Vinson Institute of Government met regularly to first develop a set of child care provider surveys and then to establish the framework for the study. A two-step process ensured that confidentiality was maintained throughout the data collection, analysis and reporting phases of the project.

The Institute of Government distributed surveys to all licensed and regulated child care providers in Georgia in the fall of 2014 and encouraged them to express their opinions and demonstrate their economic impact by completing their survey. Researchers gathered the data from providers and combined the results into a collective data set, removing any information that could identify individual centers, staff members, teachers or children. This collective data set was then passed to GSU economists for analysis. Together, the two universities produced this report for Bright from the Start: Georgia Department of Early Care and Learning.



Bright from the Start: Georgia Department of Early Care and Learning is responsible for meeting the child care and early education needs of Georgia's children and their families. It administers the nationally recognized Georgia's Pre-K Program, licenses child care centers and home-based child care, administers Georgia's Childcare and Parent Services (CAPS) program and federal nutrition programs, and manages Quality Rated, Georgia's community-powered child care rating system.

The department also houses the Head Start State Collaboration Office, distributes federal funding to enhance the quality and availability of child care, and works collaboratively with Georgia child care resource and referral agencies and organizations throughout the state to enhance early care and education. For more information, go to www.decal.ga.gov.



Since 1927, the Carl Vinson Institute of Government has been an integral part of the University of Georgia. A public service and outreach unit of the university, the Institute of Government is the largest and most comprehensive university-based organization serving governments in the United States. Assisting public officials and promoting excellence in government, particularly in Georgia, is the chief objective of the Institute of Government. Through training and development, customized assistance, application of technology and studies relevant to government operations and decision making, the Institute has the expertise to help state and local government leaders navigate change and forge strong directions for a better Georgia.



The Andrew Young School of Policy Studies at Georgia State University, in downtown Atlanta at the center of one of the nation's largest government and nonprofit hubs, is internationally recognized for its impact and influence on public policy and management issues that affect local, state and national governments around the world and advance economic opportunity, human rights and social justice.

For more information regarding this study, contact BFTSResearch@decal.ga.gov