

# Welcome to the Board of Early Care and Learning

*February 16, 2023*



**Georgia Dept  
of Early Care  
and Learning**

**BRIGHT FROM THE START**

# Board Meeting Welcome

*Phil Davis, Board Chair*



**Georgia Dept  
of Early Care  
and Learning**

BRIGHT FROM THE START

# Approval of Agenda and Minutes

- Approve 02/16/23 agenda
- Approve 11/17/22 minutes



**Georgia Dept  
of Early Care  
and Learning**  
BRIGHT FROM THE START

# Inspiration

*Susan Harper*



Georgia Dept  
of Early Care  
and Learning  
BRIGHT FROM THE START





Jack and Jill  
Albany, Georgia  
March 04, 1950

“Education is a social process...Education is growth...Education is not a preparation for life: Education is life itself.”

-John Dewey



# Board Member Updates

# Commissioner's Updates

*Amy M. Jacobs, Commissioner*



Georgia Dept  
of Early Care  
and Learning  
BRIGHT FROM THE START



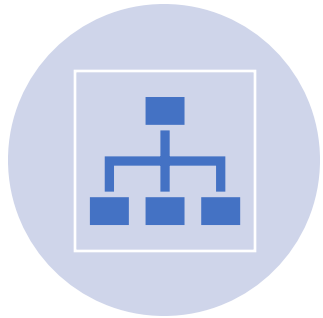
**Georgia Dept  
of Early Care  
and Learning**

**BRIGHT FROM THE START**

# **DECAL's Strategic Plan SFY 2022 – SFY 2025**

# What is the Purpose of a Strategic Plan?

---



Allow agency leadership to communicate clear direction and priorities to its employees, customers, and stakeholders.



Used by OPB and the Governor's Office as a point of reference when evaluating agency budget requests and agency legislative proposals, as well as alignment with state strategic goals.



# What is Included in a Strategic Plan?

---

- Agency **Mission Statement** to state the core function of the agency based upon statutory authority
- Agency **Vision** to reflect the over-arching priority for the agency
- **Values and Principles**
- S.W.O.T. Analysis, or environmental scan, assessing the department's **strengths, weaknesses, opportunities, and threats.**
- Agency **Strategic Goals** that state the broad strategic priorities for the future
- Agency **Strategies** for achieving the stated goals
- **Measurable Objectives** are used to measure the progress toward successfully meeting the strategic goals.



# How Our Strategic Plan was Developed

---

- April through June of 2021
- Executive Cabinet
- Facilitation by the Carl Vinson Institute of Government
- 100% Zoom
- Breakout Sessions and Digital Sticky Notes



# Expectations for Using the Strategic Plan

---



Accountability



Collaboration



Call to Action





# DECAL's Vision and Mission

## Vision

Every child in Georgia will have equal access to high quality early care and education.

## Mission

The Georgia Department of Early Care and Learning improves outcomes for children and families by strengthening early learning experiences in partnership with early education programs, professionals, stakeholders, families, and communities.



# DECAL Values

**Customer Service:** We strive to always respond professionally, courteously, respectfully, and in a timely manner to all our customers: families, child care providers, teachers, stakeholders, and policy makers.

**Integrity:** We are honest, transparent, and accountable in our work.

**Excellence:** We strive for quality and excellence in all we do; we use data, research, and best practices in our decision making.

**Innovation:** We are focused on continuous improvement and are willing to try new approaches to accomplish our vision and to achieve our goals.

**Collaboration:** We engage stakeholders and partners and value input from people and groups with diverse backgrounds and perspectives.

**Equity:** We are committed to a culture of diversity and inclusion and recognize the complex and varying needs of families and children to access high quality early education opportunities.

**Respect:** We maintain a professional work environment and value the contributions of our team members and partners in helping children and families succeed.



# DECAL Principles

---

---

Reach all children (as early in their lives as possible) and their families with high quality services and supports.

---

Create policies and procedures that help Georgia children remain healthy and safe.

---

Include and effectively accommodate children with special and complex needs.

---

Reflect and respect the strengths, needs, values, languages, cultures, and communities of children and families.

---

Make it easier for families to access quality early care and education and for children to transition from early care and preschool to kindergarten.

---

Value parents as decision makers and leaders.

---

Promote and maximize investment and foster data driven innovation.

---



# S.W.O.T. Analysis

---

## **Strengths**

- Staff dedication and adaptability, which is at the heart of DECAL's operations
- The use of evidenced-based research to make informed programmatic decisions

## **Weaknesses**

- More diversity needed across the agency (including multi-lingual employees)
- Succession planning and development needed to build bench-strength throughout the agency

## **Opportunities**

- Modernize workflow to improve technology, readiness, and provide more efficient online services
- Elevate focus on serving families by training providers to shift their focus to families

## **Threats**

- Attracting and retaining talent
- Burnout among DECAL staff



# Strategic Plan Goals

---

- 1. Align, integrate, and coordinate programs to improve school readiness for children birth to five in Georgia**

*Strategy:* Develop a "One DECAL" approach to align DECAL policy, data collection, and provider engagement where appropriate

- 2. Continue to increase the quality and accessibility of early care and education programs for children birth through school age in Georgia**

*Strategy:* Collect and analyze financial and utilization data for the early childhood education system to improve quality and access



# Strategic Plan Goals

---

## **3. Develop, professionalize, and retain a highly skilled workforce for the early care and education industry**

*Strategy:* Improve DECAL staff retention and develop and increase the diversity of DECAL leaders

## **4. Expand Two Generation (2Gen) approaches to better support children and families**

*Strategy:* Increase community-based 2Gen initiatives

## **5. Enhance the use of technology and data to better support our stakeholders**

*Strategy:* Improve and align DECAL's program applications





*Public School Pre-K Teacher of the Year*

# Shannon Gibson

- Baldwin Elementary in Habersham County
- **13 years** as a Georgia's Pre-K teacher





A circular wreath of botanical illustrations surrounds the text. The wreath includes various elements: a large red leaf, a green leaf with a prominent vein, a fern frond, a cluster of small pink flowers, a large green leaf with a wavy edge, a cluster of orange flowers, a large green leaf with a wavy edge, a large red leaf, a cluster of purple flowers, a large green leaf with a wavy edge, and a fern frond.

Shannon Gibson  
**GA Pre-K TOTY**  
Baldwin Elementary

---





# Why Pre-K?



I graduated from college with my teaching degree in 2009. This was a time when it was very difficult to find a job in education. Many school systems in my area had hiring freezes at this time. I was offered a long-term sub job in a pre-k classroom in March of 2010. I accepted the job and have been working in pre-k ever since!



# Meet My Family



My husband Kyle



Kaiti Beth, 13



Finn, 7



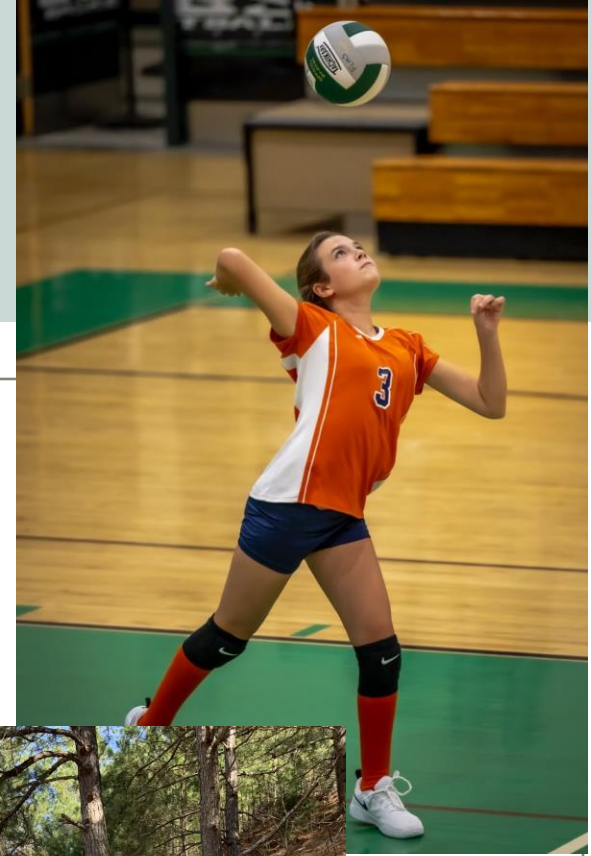
Ridge, 3







Outside of teaching, I enjoy watching my children play sports, reading, being outside, and spending time with my friends







# What being GA Pre-K TOTY Means to Me

- Raise awareness in my community about the impact of Pre-K
- Spotlight on Baldwin Elementary School and the many amazing things happening there each day!
- Hard work pays off! Give it your all everyday and work to improve, you are never too old or too experienced to learn new things and improve your craft.





Thank you



Shannon Gibson

GA Pre-K TOTY

Baldwin Elementary School

Baldwin, GA

# Board Resolution



Georgia Dept  
of Early Care  
and Learning  
BRIGHT FROM THE START



*Private School Pre-K Teacher of the Year*

# Alaina Jones

- Akers Academy in Forsyth County
- **10 years** as a Georgia's Pre-K teacher





# Alaina Jones

---

2022-2023 GA Pre-K Teacher of the Year  
For Private Schools



# Why I chose to teach Pre-K.

- Teaching was not my first choice but when I found it, I loved it. I should've known I would, coming from a family of professors and teachers.





# Why I continue to teach Pre-K.

- ♥ In some cases, I get to be this child's first school experience and I want it to be filled with love, support and room to explore, test, learn and grow.



# My Awesome Family

- ♥ I have two amazing kids.
- ♥ My son is 26. He is a Software Engineer at T-Mobile in Atlanta. He just purchased his first house in Smyrna.
- ♥ My daughter is 23 and is a Biology Major at University of North Georgia Dahlonega. She introduced me to my love of K-Pop.





# When I'm not teaching I love to...

- Cosplay: dressing up as a character from a movie or book.
- Professor Sybil Trelawney:  
Harry Potter





- Miss Frizzle: The Magic School Bus



When I'm  
not teaching  
I love to...

The image shows the Netflix logo, which consists of the word "NETFLIX" in a bold, red, sans-serif font. The logo is centered within a black rectangular background. The entire scene is framed by a white border, and there are dark grey horizontal bars on the left and right sides, suggesting a slide or a page from a presentation.

**NETFLIX**

- Binge historical, period, or international dramas.



# Being selected as Georgia Pre-K's Teacher of the Year

---

- It is the culmination of years of teaching and learning to be better. I didn't start off being a great teacher. I made mistakes. Lesson Plans failed. But I sought advice, knowledge and wisdom from others in the field to help me become a better more effective teacher.
- Being selected as Teacher of the Year is validation that I'm doing it right.



# Board Resolution



Georgia Dept  
of Early Care  
and Learning  
BRIGHT FROM THE START



# Finance, Administration, & Nutrition Updates

*Rian Ringsrud, Deputy Commissioner for Finance & Administration*



Georgia Dept  
of Early Care  
and Learning  
BRIGHT FROM THE START

## FY 2023 Budget Comparison

Data as of Dec 31st	Budget	Expenditures*	Remaining Balance	% Remaining
<b>BY PROGRAMS</b>				
Child Care Services	\$1,239,255,007	\$632,521,607	\$606,733,400	49%
Nutrition	\$148,000,000	\$79,287,110	\$68,712,890	46%
Pre-K + (HS)	\$401,075,881	\$190,804,568	\$210,271,313	52%
Quality Initiatives	\$61,414,822	\$23,323,988	\$38,090,834	62%
<b>Totals</b>	<b>\$1,849,745,710</b>	<b>\$925,937,273</b>	<b>\$923,808,437</b>	<b>50%</b>

<b>BY FUNDING SOURCES</b>				
State General	\$61,436,817	\$24,227,343	\$37,209,474	61%
State Lottery	\$400,900,881	\$190,719,173	\$210,181,708	52%
Federal	\$1,386,908,512	\$710,749,735	\$676,158,777	49%
Other	\$499,500	\$241,022	\$258,478	52%
<b>Totals</b>	<b>\$1,849,745,710</b>	<b>\$925,937,273</b>	<b>\$923,808,437</b>	<b>50%</b>

\* Includes encumbrances.

# Finance Update FY 2023 Budget Summary – Q2



## Governor's AFY 2023 Recommendation

Original FY 2023  
Appropriation

AFY 2023  
Recommendation

Change

### BY PROGRAMS

Child Care Services	\$327,996,336	\$327,996,336	\$0
Nutrition	\$148,000,000	\$148,000,000	\$0
Pre-K + (HS)	\$401,075,881	\$401,075,881	\$0
Quality Initiatives	\$61,414,822	\$61,414,822	\$0
Totals	\$938,487,039	\$938,487,039	\$0

### BY FUND SOURCES

State General	\$61,436,817	\$61,436,817	\$0
State Lottery	\$400,900,881	\$400,900,881	\$0
Federal	\$475,649,841	\$475,649,841	\$0
Other	\$499,500	\$499,500	\$0
Totals	\$938,487,039	\$938,487,039	\$0

# Governor's Recommendation AFY 2023



## Governor's FY 2024 Recommendation

	Original FY 2023 Appropriation	FY 2024 Recommendation	Change
--	-----------------------------------	---------------------------	--------

### BY PROGRAMS

Child Care Services	\$327,996,336	\$329,093,884	\$1,097,548
Nutrition	\$148,000,000	\$148,000,000	\$0
Pre-K + (HS)	\$401,075,881	\$435,785,158	\$34,709,277
Quality Initiatives	\$61,414,822	\$61,414,822	\$0
Totals	\$938,487,039	\$974,293,864	\$35,806,825

### BY FUND SOURCES

State General	\$61,436,817	\$62,534,365	\$1,097,548
State Lottery	\$400,900,881	\$435,610,158	\$34,709,277
Federal	\$475,649,841	\$475,649,841	\$0
Other	\$499,500	\$499,500	\$0
Totals	\$938,487,039	\$974,293,864	\$35,806,825

# Governor's Recommendation FY 2024



# Child Care Services

## State General Funds Change

FY 2023	FY 2024	Increase	% Change
\$61,436,817	\$62,534,365	\$1,097,548	1.79%

## Increase

- Increase funds to provide a \$2,000 cost-of-living adjustment for all full-time, benefit-eligible state employees effective July 1, 2023, to address agency recruitment and retention needs = \$51,848
- Increase funds to reflect an adjustment in the Federal Medical Assistance Percentage (FMAP) from 66.02% to 65.89% = \$1,045,544

Governor's  
Recommendation  
FY 2024



# Pre-K Program

State Lottery Funds Change			
FY 2023	FY 2024	Increase	% Change
\$400,900,881	\$435,610,158	\$34,709,277	8.66%

## Increase

- Increase funds to provide a \$2,000 cost-of-living adjustment for all full-time, benefit-eligible state employees effective July 1, 2023, to address agency recruitment and retention needs = \$202,326
- Reduce formula funds for training and experience for Pre-K teachers= \$(178,981)
- Increase formula funds for classroom operations and redirect existing funding to Pre-K lead teacher salaries= \$14,035,636
- Increase funds to adjust the state base salary schedule to increase salaries for certified Pre-K teachers and assistant teachers by \$2,000 = \$20,647,514

# Governor's Recommendation FY 2024



# Georgia's Pre-K and Instructional Supports Updates

*Susan Adams, Deputy Commissioner for Georgia's Pre-K and Instructional Supports*



Georgia Dept  
of Early Care  
and Learning  
BRIGHT FROM THE START

# Pre-K Summer Transition Program

---

- During FY 2021 and FY 2022 DECAL expanded STP to mitigate learning loss experienced by children during the COVID-19 pandemic
- Expanded number of STP classes by 74% from 222 classes serving 3,110 children in FY 2019 to 387 classes serving 3,999 children in FY 2022
- Expansion will continue in FY 2023





# Pre-K Summer Transition Program

---

## Summer 2023 Updates

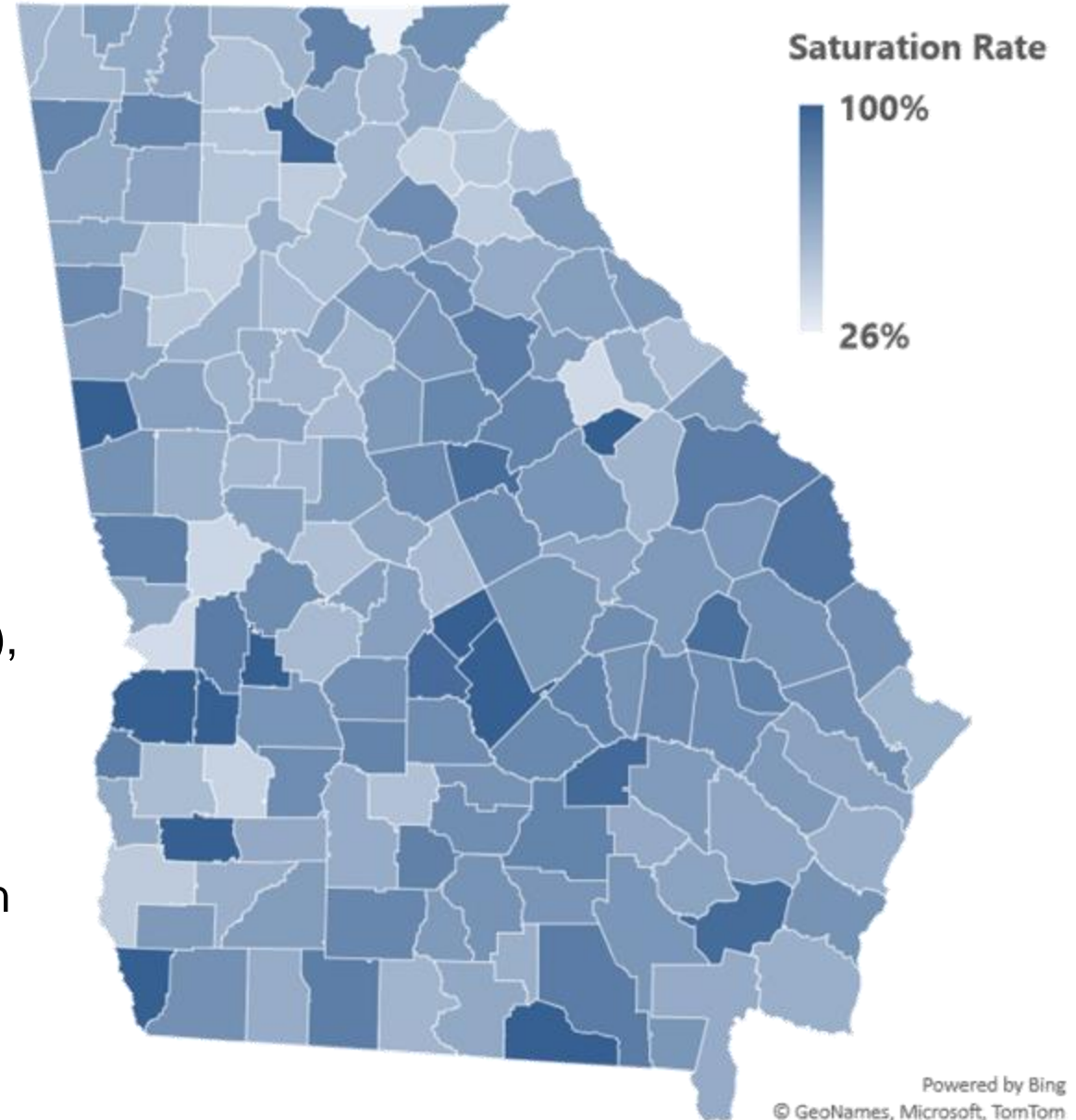
- Program calendar reduced from 6 weeks to 5 weeks
  - Teacher recruitment
  - Program & family feedback
- Salaries updated to reflect increases in school year salary

*Application closed on February 10<sup>th</sup>*

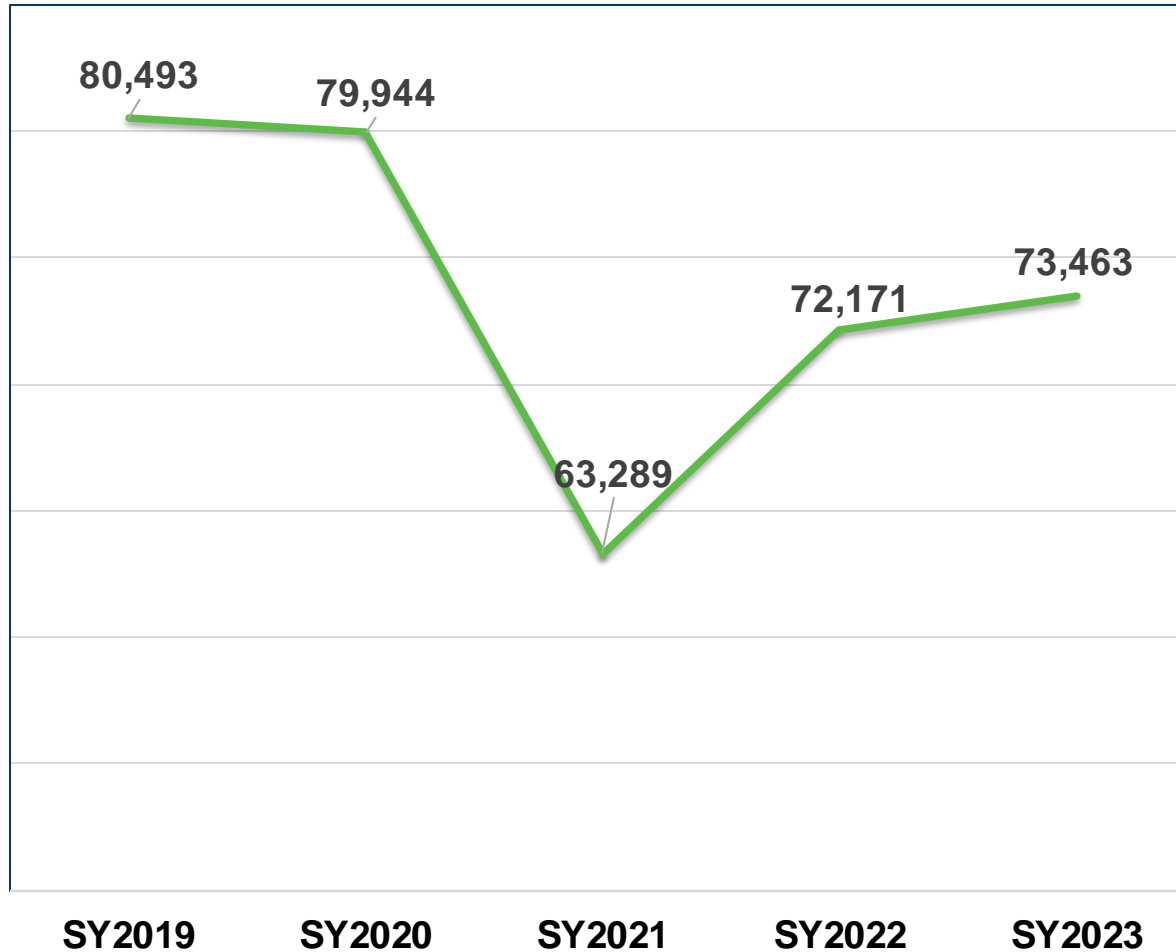




- Current Enrollment: 73,462
  - Estimated 54% of 4-year-olds.
  - 38% (60) counties serve 70% or more of their 4-year-olds
  - 18% (29) of counties serve less than 50% of their 4-year-olds
- Current Waiting List: 2,718
  - Counties with the highest waiting list: Fulton (378), Henry (178), Gwinnett (116), Fayette (115), Bibb (101), and Carroll (107)
  - 21% (34) counties have a waiting list of 20 or greater
  - 69% (110) counties have a waiting list of less than 10. Eighty-one of these counties have no wait list



## Slight Increase in Pre-K Enrollment for SY2023



### % of Four-Year-Old Population Served:

SY2019: 60%

SY2020: 60%

SY2021: 46%

SY2022: 53%

**SY2023: 54%**



# Why is Enrollment Decreasing?

---

## Following national and state trends for enrollment

- Birth rate: 16% fewer births in 2018 than Georgia's peak in 2007
- Kindergarten enrollment down 2.5%

## Impact of the pandemic

- Family choices for preschool children
- Family mobility
- Population shifts within the state



# Why is There Still a Waiting List with Low Enrollment?

---

- **Open slots are not aligned with waiting list demand**
- **No quality capacity in areas of need**
- **Parent choice/need**
  - Preference of program type
  - Location
  - Transportation
  - Aftercare



# Pre-K Application

---

- **Pre-K Program Application will open on Tuesday, March 7<sup>th</sup> and close on Thursday, March 30<sup>th</sup>.**
- **Funding priorities:**
  - Reducing class size to 20 (pilot)
  - Expansion in areas with waiting list
  - Closure of classrooms with consistently low enrollment



# Pyramid Model Training

- The [Pyramid Model](#) is a framework of evidence-based practices for promoting young children's **healthy social and emotional development**
- DECAL is utilizing federal recovery funds to provide Pyramid Model training to the early learning workforce
  - Directors/ Administrators/ Principals
  - Infant, Toddler, Preschool & Pre-K teachers
- Training will include online e-modules and professional learning community sessions





- DECAL will train approximately 1,000 educators by September 2024
  - 22 programs will participate in the pilot training series beginning in March
- Participants will receive a \$400 stipend and \$175 in Class Wallet funds to purchase Pyramid Model materials
- Child Trends is conducting an evaluation of the training series





# Inclusive Early Learning Week: February 12th-18th

- **Inclusive Early Learning Week (IELW)** promotes the importance of inclusion with early childhood providers and families throughout Georgia
- **How to Celebrate:**
  - Sign the IELW pledge
  - Share the IELW toolkit (available on DECAL's website) with early learning programs and families you know
  - Read a book about inclusion to an early childhood program
  - Share your celebrations on social media using the hashtag #loveinclusion





# Inclusive Early Learning Week Proclamation



Georgia Dept  
of Early Care  
and Learning  
BRIGHT FROM THE START

# Child Care Services Updates

*Pam Stevens, Deputy Commissioner for Child Care Services*



Georgia Dept  
of Early Care  
and Learning  
BRIGHT FROM THE START

# Child Care Services Rule Revisions



Georgia Dept  
of Early Care  
and Learning  
BRIGHT FROM THE START

## Changes made annually

- Beginning of the state fiscal year (July 1)
- Beginning of the federal fiscal year (October 1)

## Reasons for rule changes

- Health and safety
- Quality improvement
- Child Care Development Fund requirements

# Licensing rule change process





# Rule change timeline

- February – Annual rule review
- May – specific rule changes identified and presented to Board
- July – public webinars
- August – public hearing & Board vote
- October 1, 2023 – effective date



# CCS Proposed Rule Changes - CCLC

## **Rules and Regulations for Child Care Learning Centers**

### **Rule Chapter 591-1-1-**

- **.16(g)** – add language that the Department may **revoke** a license for false or misleading information.
- **.07(2)** – add language that Parents must be notified of **incidents** involving their children (ex. missing child, etc. and not just illnesses or injuries)
- **.36(7)(c)(3.)** – adding requirement for including **date** for arrival/departure on transportation checklists
- Remove language that references the National Sex Offender Registry since IONS is used now– change to broad language “**a check of state and federal registries and databases**”
  - **Definitions - .02(f) and .02(ii)**
  - **CRC - .09(1)(h)**

# CCS Proposed Rule Changes - FCCLH

## **Rules and Regulations for Family Child Care Learning Homes**

### **Rule Chapter 290-2-3-**

- **.08(8)(b)(4.)** – add language that Parents must be notified of **incidents** involving their children (ex. missing child, etc. and not just illnesses or injuries)
- Remove language that references the National Sex Offender Registry since IONS is used now– change to broad language “**a check of state and federal registries and databases**”
  - **Definitions - .03(e) and .03(v)**
  - **CRC - .21(1)(i)**

# Break

*Ten Minutes*



**Georgia Dept  
of Early Care  
and Learning**  
BRIGHT FROM THE START

# Child Care Services Updates, *continued*

# Compliance at a Glance

*Dana Morrison, Child Care Services Director of Field Operations*



**Georgia Dept  
of Early Care  
and Learning**

**BRIGHT FROM THE START**





Georgia Dept  
of Early Care  
and Learning  
BRIGHT FROM THE START



**GEEARS**  
GEORGIA EARLY EDUCATION  
ALLIANCE FOR READY STUDENTS

# RELEASE OF THE CHILD CARE COMPLIANCE AT A GLANCE TOOL

*A New Resource to Help Families  
Find High-Quality Child Care*



# Dashboard

Has this program reported a temporary closure?

Yes  No

Full time care for school age children enrolled in a distance learning program during a public health emergency:

Yes  No  Not Reported

White, Betty

FR-000002298

123 FCCLH Learning Lane,  
Norcross, GA 30093

[Get Directions](#)

Phone: (404) 404-0404

**Operating Months:**

Year Round

**Operating Days:**

Mon - Fri

**Operating Hours:**

06:00 AM - 10:00 PM (Weekday)

Service Provided

**Administrator:** Mary Cole

**Licensed Capacity:** 6

**Has Liability Insurance?** No

Accepting New Children

**Mailing Address**

Same as facility address

Click for Compliance At A Glance



**Type:** Family Child Care Learning Home

**Registration Fee:** \$70.00

**Activity/Supply Fee:** \$0.00

## Services

Accepts Child Care Subsidies (CAPS)

After School Only

CACFP

Drop-In Care

Evening/Night Care

Head Start

Religion-based

School-age Summer Care

SFSP

## Ages Served

Infant (0 -12 months)

Toddler (13 months - 2 years)










Preschool (3 years - 4 years)

Georgia's Pre-K (4 Years)

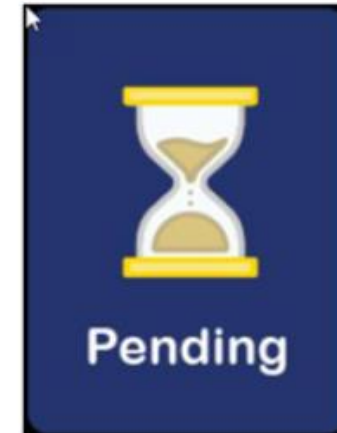
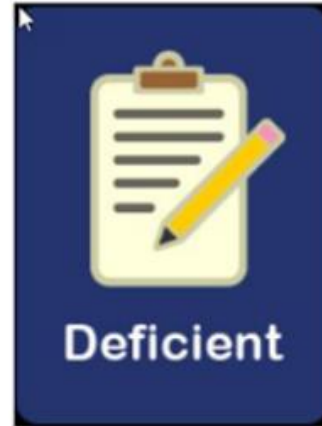
School Age (5+)



## Inspection Reports

View Report	Report Date	Arrival Time	Report Type
	Apr 19, 2022	09:30 AM	Monitoring Visit
	Oct 27, 2021	09:50 AM	Licensing Study
	Apr 20, 2021	03:10 PM	Monitoring Visit
	Dec 23, 2020	03:00 PM	Licensing Study
	Dec 03, 2019	10:20 AM	Licensing Study
	Apr 15, 2019	08:30 AM	Licensing Study
	Oct 23, 2018	09:00 AM	Monitoring Visit
	Jan 26, 2018	11:00 AM	Licensing Study
	Sep 07, 2017	01:50 PM	Monitoring Visit

# Compliance Zone Designations Icons







[RETURN TO PROVIDER DETAILS PAGE](#)

## Compliance Zone Designation

A compliance zone designation is a summary measure of a program's 12-month monitoring history as it pertains to child care health and safety rules. The three compliance zones a program can receive are:

**Good Standing** - Program is demonstrating an acceptable level of performance in meeting the rules.



which is better than

**Support** - Program performance is demonstrating a need for improvement in meeting rules.



which is better than

**Deficient** - Program is not demonstrating an acceptable level of performance in meeting the rules.

**Pending** – This is a time limited designation meaning a program recently received a licensing visit or that the program is going through a change of ownership and their compliance zone designation is being updated.

[WHAT IS THE ENFORCEMENT AND COMPLIANCE SYSTEM?](#)

[COMPLIANCE AT A GLANCE FAQ'S FOR PARENTS](#)



# Compliance at a Glance Tool

---



## Annual Compliance At A Glance



TO VIEW LICENSING RULE CHAPTER DEFINITIONS

TO REVIEW FULL LICENSING REPORTS

+ Fiscal Year 2022

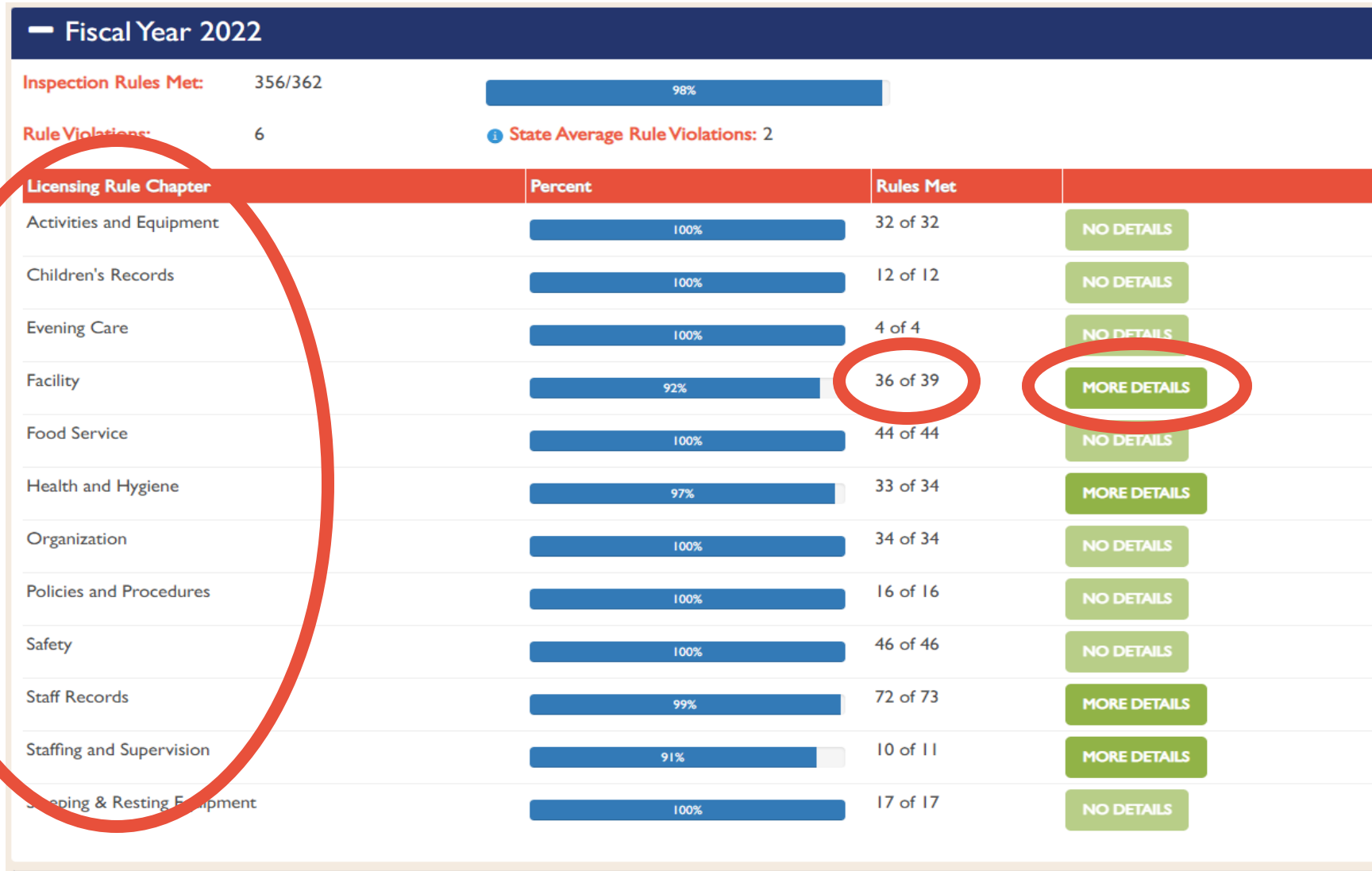
+ Fiscal Year 2021

+ Fiscal Year 2020





# Compliance at a Glance Tool



# More Details

## Facility Record Rules

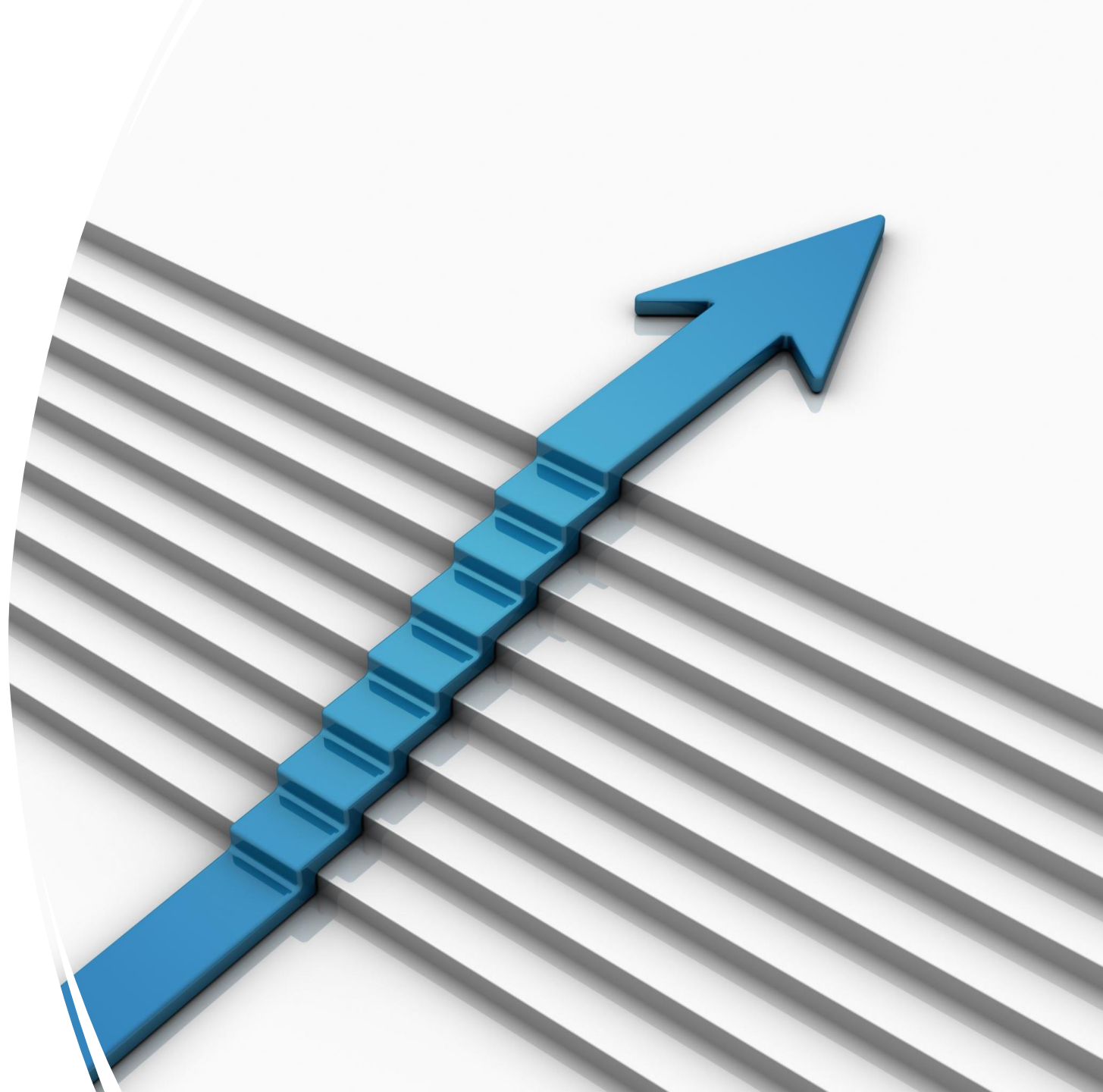
	Code	01/20/2022	08/01/2022	05/19/2022
<a href="#">VIEW RULE</a>	.25(3) - Physical Plant - Safe Environment	Not Met	Corrected	-
<a href="#">VIEW RULE</a>	.26(4) - Playgrounds	Not Met	-	Corrected
<a href="#">VIEW RULE</a>	.26(9) - Playgrounds	Not Met	-	Corrected

### .25(3) - Physical Plant - Safe Environment

(3) Cleanliness. The Center and surrounding premises shall be kept clean, free of debris and in good repair. Hygienic measures such as, but not limited to, screened windows and proper waste disposal procedures shall be utilized to minimize the presence of rodents, flies, roaches and other vermin at the Center.



# Next Steps





# GEEARS' Social Press Kit

*Your voice is their future*



## GEEARS' Social Press Kit



CAMPAIGN 

### New Resource to Help Families Find Child Care

#### DESCRIPTION

Choosing an early care and education provider is one of the **most important decisions a family makes**.

In partnership with GEEARS: Georgia Early Education Alliance for Ready Students, the Georgia Department of Early Care and Learning (DECAL) has created **a new resource to help families find high-quality child care**.

Funded through the federal Preschool Development Grant (PDG), this tool, called **Compliance at a Glance**, will empower families to make more informed child care choices by helping them **better understand and access** the information collected through child care inspections and monitoring.

**We need your help** to make sure that families across Georgia are aware of this new tool! Use the pre-made social graphics and language below to share with your network. Thank you for your partnership on behalf of Georgia's children.





f FACEBOOK POSTS



**Facebook Post #1**

Did you know? Licensed child care programs receives a minimum of two unannounced inspections from the state annually to ensure the program is following health and safety rules.

@brightfromthestart has created a new resource, called Compliance at a Glance, to help families like yours better understand and access the information collected through these inspections.

To access the new tool:

- 1) Go to [www.qualityrated.org](http://www.qualityrated.org)
- 2) Search for your current or prospective child care provider
- 3) Click Compliance at a Glance



**Facebook Post #2**

@brightfromthestart has several free tools to help you find high-quality child care in Georgia, including #QualityRated & a new tool called Compliance at a Glance. These tools measure different components of #quality and are both useful tools to look at when searching for child care.

Compliance at a Glance is a new tool to help families better understand and access the information collected through child care licensing and monitoring related to health and safety.

Quality Rated is Georgia's voluntary quality rating and improvement system for child care. Quality Rated assigns one, two, or three stars to child care programs based on best practices assessed by independent experts. Quality Rated programs go above and beyond state licensing requirements.



**Facebook Post #3**

Choosing an early care and education provider is one of the most important decisions a family makes. @brightfromthestart has created a new tool, called Compliance at a Glance, to help families find high-quality child care.

The tool helps you make more informed decisions related to child care by making information collected through child care licensing and monitoring more accessible.

To access the new tool:

- 1) Go to [www.qualityrated.org](http://www.qualityrated.org)
- 2) Search for your current or prospective child care provider
- 3) Click Compliance at a Glance



PUSH  
CARD

*Introducing*  
 **Child Care  
SERVICES**  
Compliance-at-a-Glance Feature



on [www.QualityRated.org](http://www.QualityRated.org)



The new Compliance-at-a-Glance Feature uses the four symbols above to communicate a program's licensing compliance status. It's an additional tool to help families evaluate a child care program's quality and to expand their knowledge of the licensing process.

Visit DECAL's Website and Select "Find Child Care" on the Blue Menu to Learn More

[www.decals.ga.gov](http://www.decals.ga.gov)



**Georgia Dept  
of Early Care  
and Learning**  
BRIGHT FROM THE START





PUSH  
CARD

**Quality Rated Child Care** from the Georgia Department of Early Care and Learning assigns 1, 2, or 3 stars to Georgia providers that meet its high standards for quality. Now, the agency has added a new symbol to the records that indicates whether the program's license is in good standing, support, deficient, or pending status. The records are available through the **Quality Rated** search tool at [www.QualityRated.org](http://www.QualityRated.org). It's free and easy to use!

★ Go to [www.QualityRated.org](http://www.QualityRated.org) or scan this QR code



★ Search for child care and Georgia's Pre-K options near you that are star-rated by trained experts

★ Look for     in your search results to see the licensing compliance status

★ Choose "Click for Compliance At A Glance" to see detailed licensing information

★ Call **1-877-ALL-GA-KIDS** for personalized help  
**(1-877-255-4254)**

**Mary K. Provider**

111 Any Street  
Milledgeville, GA 30566  
Get Directions  
678-555-1234

Administrator: Mary K. Provider  
Licensed Capacity: 6  
Has Liability Insurance? Yes  
 Accepting New Children  
Near Record  
Total Visitation: 1

Mailing Address  
Same as facility address  
Click for Compliance At A Glance  


Type: Family Child Care Learning Home  
Registration Fee: \$165.00  
Activity/Supply Fee: \$0.00  
Current Program Status: Open

**Operating Hours:**  
Mon - Fri  
Weekday 06:45 AM - 05:30 PM  
 Service Provided  
(Last updated Aug 14, 2023)

**Services**

<input checked="" type="checkbox"/> Accepts Child Care Subsidies (CACS)	<input type="checkbox"/> Head Start
<input type="checkbox"/> After School Only	<input type="checkbox"/> Religion-based
<input type="checkbox"/> CACFP	<input checked="" type="checkbox"/> School-age Summer Care
<input type="checkbox"/> Drop-In Care	<input type="checkbox"/> SFP
<input type="checkbox"/> Evening/Night Care	

**Agos Served**

<input checked="" type="checkbox"/> Infant (0-12 months)
<input checked="" type="checkbox"/> Toddler (13 months - 2 years)
<input checked="" type="checkbox"/> Preschool (3 years - 4 years)
<input type="checkbox"/> Georgia's Pre-K (4 Years)
<input checked="" type="checkbox"/> School Age (5+)

**Transportation**

<input type="checkbox"/> Soften Home	<input checked="" type="checkbox"/> Breakfast
<input type="checkbox"/> Soften School	<input checked="" type="checkbox"/> Lunch
<input type="checkbox"/> After-school Only (PM Only)	<input type="checkbox"/> Dinner
<input type="checkbox"/> Georgia's Pre-K Only	<input type="checkbox"/> Afterschool
<input type="checkbox"/> Near Public Transportation	<input checked="" type="checkbox"/> PM Snack
<input type="checkbox"/> On School Bus Route	<input checked="" type="checkbox"/> Accommodates Special Diets
<input type="checkbox"/> Field trips	<input checked="" type="checkbox"/> Provides before meals
<input type="checkbox"/> Before and after school	<input type="checkbox"/> Parents must provide meals

**Meals Served**

**Accreditation Status:**  
N/A

**Environment**

<input checked="" type="checkbox"/> No pets	<input type="checkbox"/> Provide your own equipment	<input type="checkbox"/> Sprinkler fields	<input type="checkbox"/> Video surveillance
<input type="checkbox"/> Outdoor Play area	<input checked="" type="checkbox"/> Secure Ground/Ramp Access	<input type="checkbox"/> Tennis Courts	<input type="checkbox"/> Walkways for games
<input type="checkbox"/> Pool	<input checked="" type="checkbox"/> Smoke-Free Environment		

**Summer Camp**

<input type="checkbox"/> Summer Camp	<input checked="" type="checkbox"/> Full Time
<input type="checkbox"/> Before Camp Care	<input type="checkbox"/> Part Time
<input type="checkbox"/> After Camp Care	





**Compliance-at-a-Glance** is a new feature helping parents understand licensing compliance during their search for child care.



Good Standing

Program is demonstrating an acceptable level of performance in meeting the rules



Support

Program performance is demonstrating a need for improvement in meeting rules



Deficient

Program is not demonstrating an acceptable level of performance in meeting rules

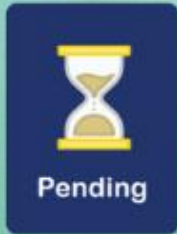
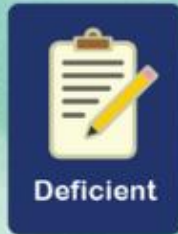


Pending

This is a time limited designation, meaning a program recently received a licensing visit or that program is going through a change of ownership and the compliance zone is being updated



# Look for



in your search results for child care to see the licensing compliance status

## Choose

### "Compliance At A Glance"

to see detailed licensing information



# Facebook



Georgia Department of Early Care and Learning

5h · 🌐

The Family Friendly Licensing Dashboard gives families the ability to have information at their fingertips about licensed child care programs. The dashboard was created with families of children in mind and to provide them with an overview of child care programs.

Visit [QualityRated.org](https://QualityRated.org)

## Compliance-at-a-Glance

is a new feature helping parents understand licensing compliance during their search for child care.



Good Standing

Program is demonstrating an acceptable level of performance in meeting the rules



Support

Program performance is demonstrating a need for improvement in meeting rules



Deficient

Program is not demonstrating an acceptable level of performance in meeting rules



Pending

This is a time limited designation, meaning a program recently received a licensing visit or that program is going through a change of ownership and the compliance zone is being updated





# Training

---

- Peer Ambassadors
- Community Coordinators
- Call Center





# We Need Your Help!

[https://socialpresskit.com/gears#  
new-resource-to-help-families-  
find-child-care](https://socialpresskit.com/gears#new-resource-to-help-families-find-child-care)



PRESS KIT



# Quality Innovations and Partnerships Updates

*Bentley Ponder, Deputy Commissioner for Quality Innovations and Partnerships*



Proud  
to be

 **QUALITY  
RATED**  
CHILD CARE

Visit  
QualityRated.org



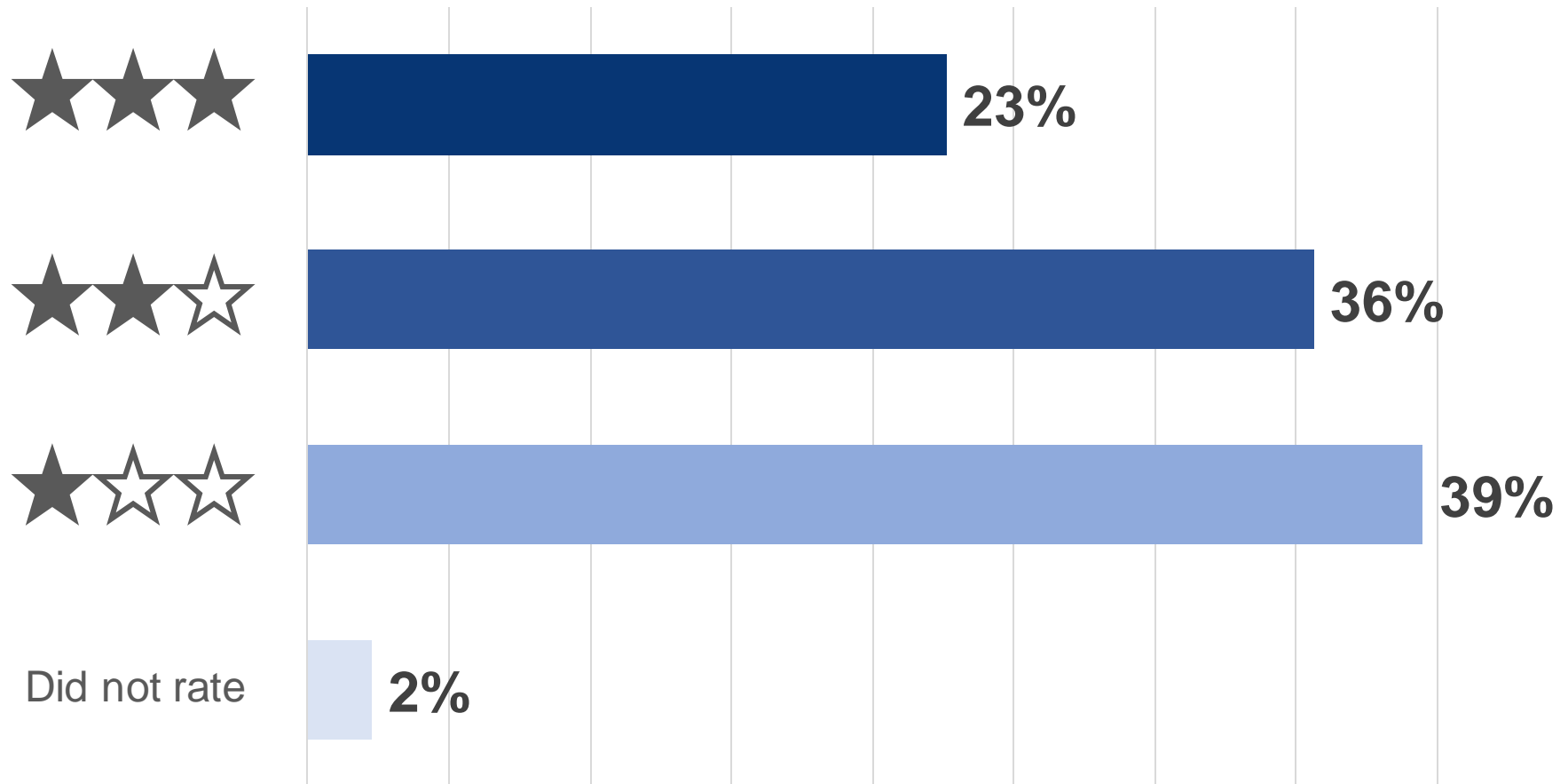
# Quality Rated Updates

---



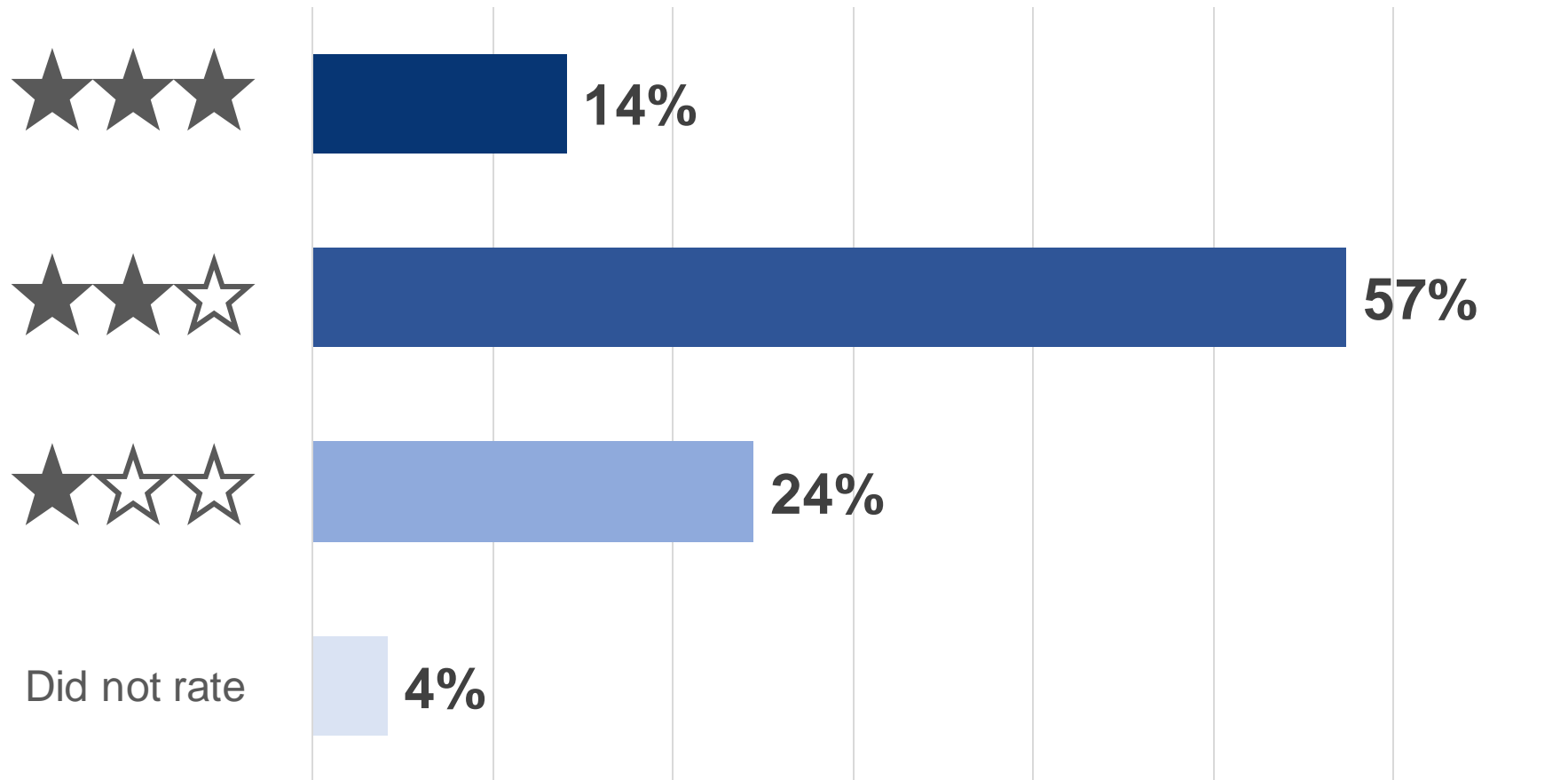


## Distribution of ratings for the **438 programs** rated through **TARO**





Distribution of ratings for the **462 programs** that went through the **traditional rating process**



**Provisional Status** allows newly licensed and new to CAPS providers to be CAPS-eligible while working on achieving their first rating.

**Probationary Status** allows programs that receive a 0 rating to remain CAPS-eligible while working on achieving a star rating.

	Provisional	Probationary	Total
<b>Assigned Provisional or Probationary status in 2022</b>	224	140	<b>364</b>
<b>Rated in 2022/2023</b>	57	46	<b>103</b>



# Quality Rated Language and Literacy Endorsement (QRLLE)

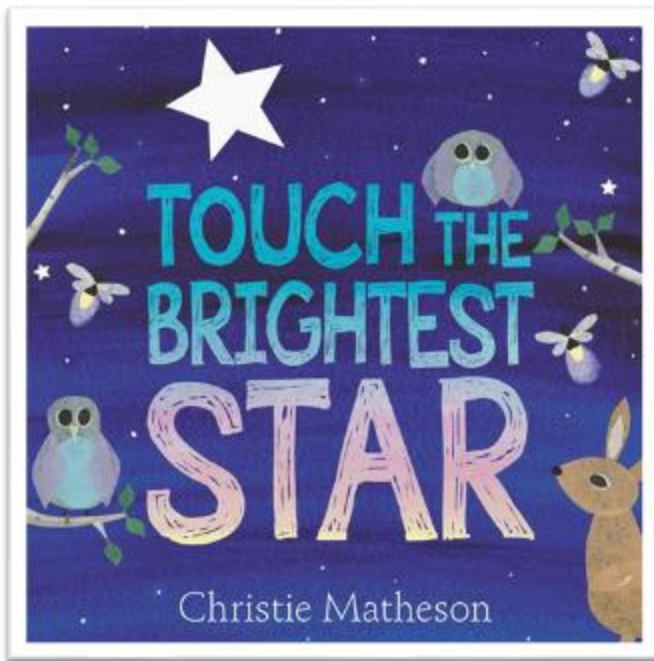


- Established by Governor Brian Kemp in 2019, the QRLLE is an additional recognition added to the Quality Rated system, available to existing 2- and 3-star Quality Rated programs
- Year-long experience of high-quality professional development for program leaders and infant, toddler, and preschool teachers
- Also includes literacy resources for classrooms, a technology grant, a growth materials package, and stipends for participants
- Eight centers participated in a pilot and received the LLE in 2021
- 22 centers and 11 family child care providers currently participating, expected to receive LLEs this spring





# Quality Rated 10-Year Anniversary



Proud  
to be



Visit  
QualityRated.org



*A Decade of Stars*  
2012-2022



QUALITY  
RATED  
CHILD CARE

[www.QualityRated.org](http://www.QualityRated.org)



# Quality Rated “Through the Years”

---

Since the first observation on September 13, 2012, Quality Rated has conducted **8,457** observations for ratings.



**3,117** infant/toddler classrooms



**3,867** preschool classrooms



**1,212** family child care learning homes

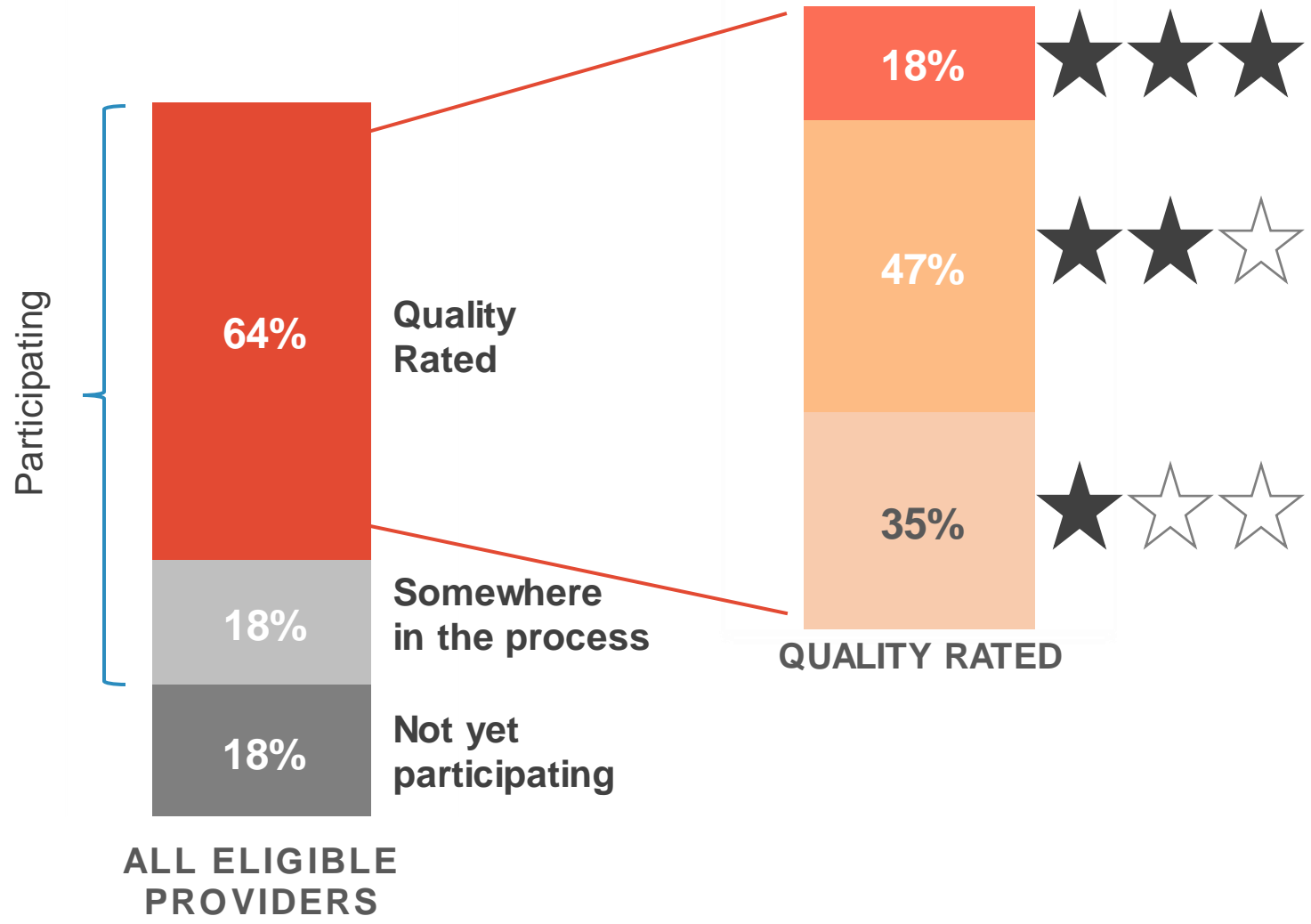


**261** school age programs





# Of Georgia's 4,469 eligible providers, **2,858** are Quality Rated.





# Research and Policy Analysis Updates

---



# CCDBG Implementation Research and Evaluation Grant

---

*Awarded in 2017, concludes March 2023.*

## **Objectives of the grant:**

- Increase DECAL-supported research on infants and toddlers
- Align existing policies and programs with the CCDF State Plan and improve services for infants and toddlers
- Strengthen Georgia's early education research capacity
- Increase communication of findings and results of infant and toddler research

## **Grant activities have included:**

- Research summits with DECAL program leaders
- Evaluations of child care policy using administrative data
- Georgia policy research presented at multiple national conferences
- Data visualization and management trainings



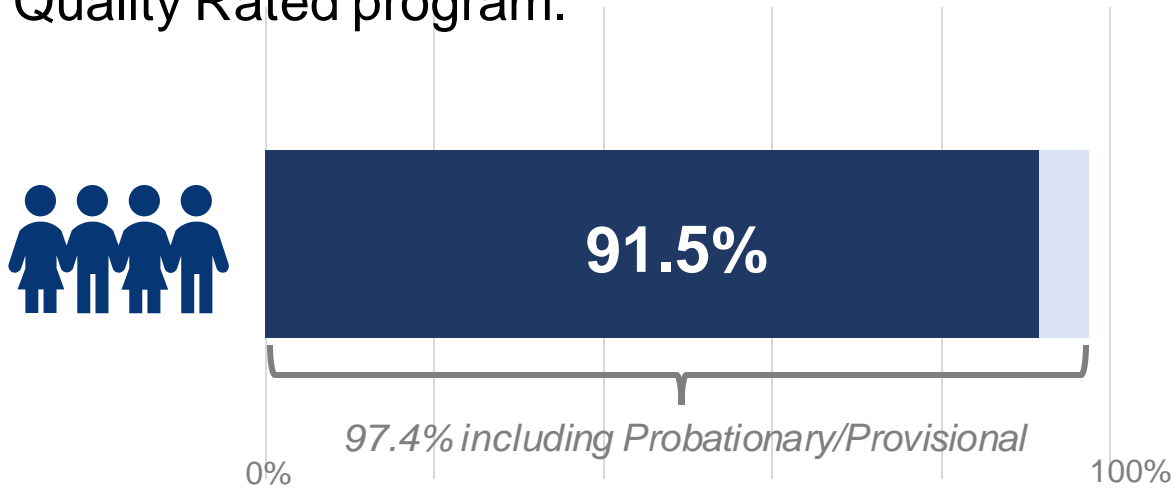
# New publications posted to <https://www.decal.ga.gov/BftS/Research.aspx>

- Evaluation of Quality Rated's Temporary Alternate Rating Option (TARO)
  - Quality Rated's Temporary Alternate Rating Option: Findings from Surveys and Interviews
  - Quality Rated's Temporary Alternate Rating Option: Findings from Administrative Data
- ACCESS Reduces Burden of Child Care Costs for Georgia's Families
- Evaluation of Georgia's Pilot Language and Literacy Endorsement Report

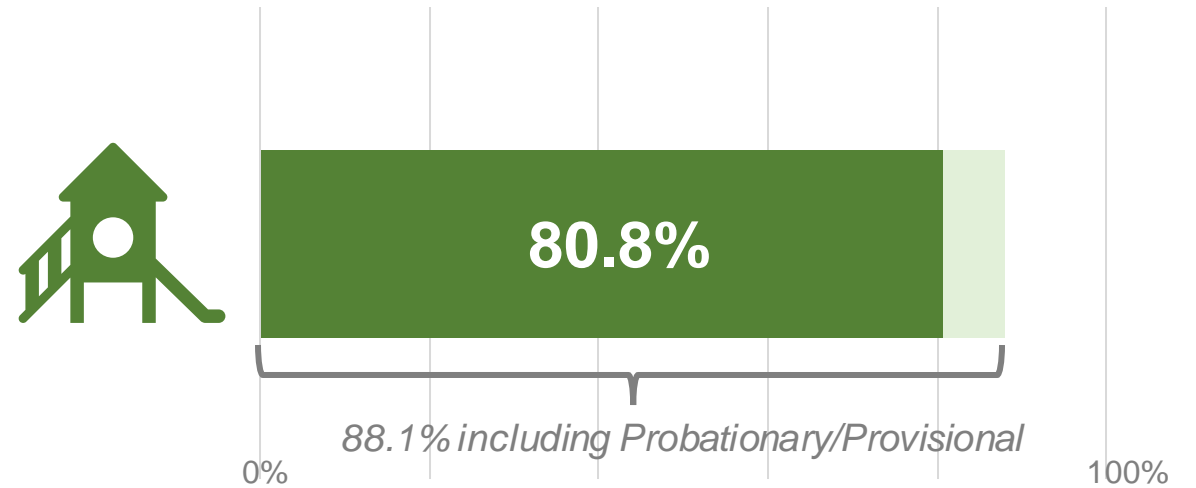


*Programs participating in CAPS must be Quality Rated. As 12/31/22:*

**70,985** children with CAPS scholarships are in a Quality Rated program.



**2,385** CAPS providers are Quality Rated.





# Federal Programs Updates

*Elisabetta Kasfir, Deputy Commissioner for Federal Programs*

*Kay Mayfield, Childcare and Parent Services Director of Provider Relations*



**Georgia Dept  
of Early Care  
and Learning**  
BRIGHT FROM THE START

# Historical Perspective to Present

---

- In 2012, CCDF funding and administration of the Childcare and Parent Services (CAPS) program transferred from Division of Family and Children Services (DFCS) to Department of Early Care and Learning (DECAL) – payment and provider management was handled by a vendor.
- In 2017, the final component of the CAPS program at DFCS transferred to DECAL – payment and provider management was handled by a vendor.
- In 2023, DECAL will take over administering the provider management component of the CAPS program from the vendor.



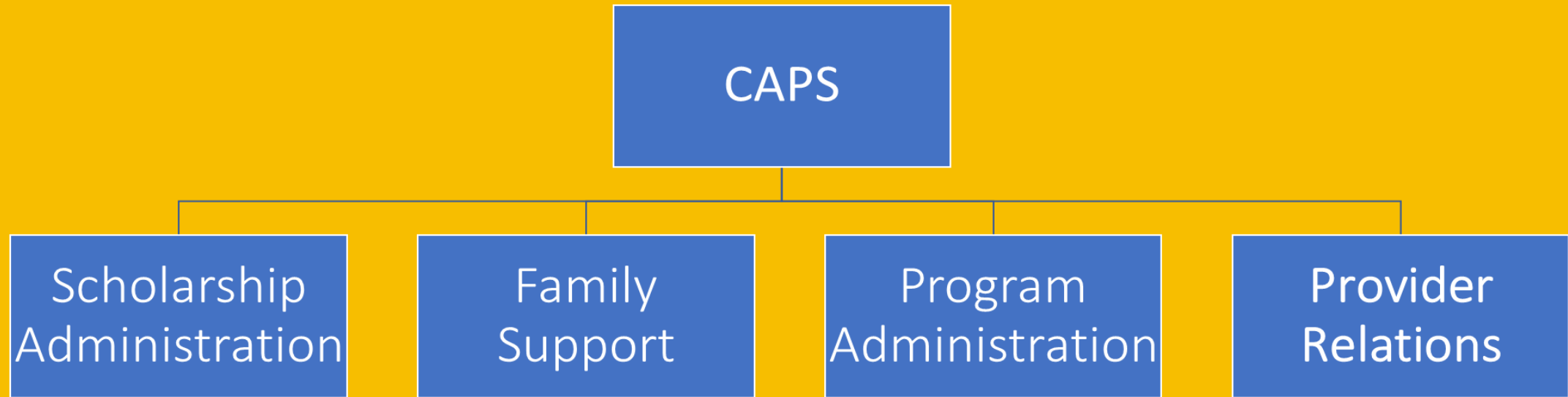
# Why Take on Provider Management?

---

- DECAL has long standing history and relationships with child care providers.
- CAPS is the only program administered by DECAL where provider management functions are handled externally, by a vendor.
- Allows for streamlined services and increased service levels for child care providers.
- Simplifies processes and allows a “one-stop-shop” approach for child care providers.



# CAPS Functional Areas



# CAPS

## Provider Relations

### Functional Area



**Georgia Dept  
of Early Care  
and Learning**  
BRIGHT FROM THE START



# Staffing for Provider Management and Payments Functions

## Current State

## Future State

Maximus	19	CAPS Provider Relations	38
CAPS Provider Relations	11	Other support positions	9
<b>Total</b>	<b>30</b>	<b>Total</b>	<b>47</b>

# Provider Relations Functional Area Breakdown

Enrollment Services

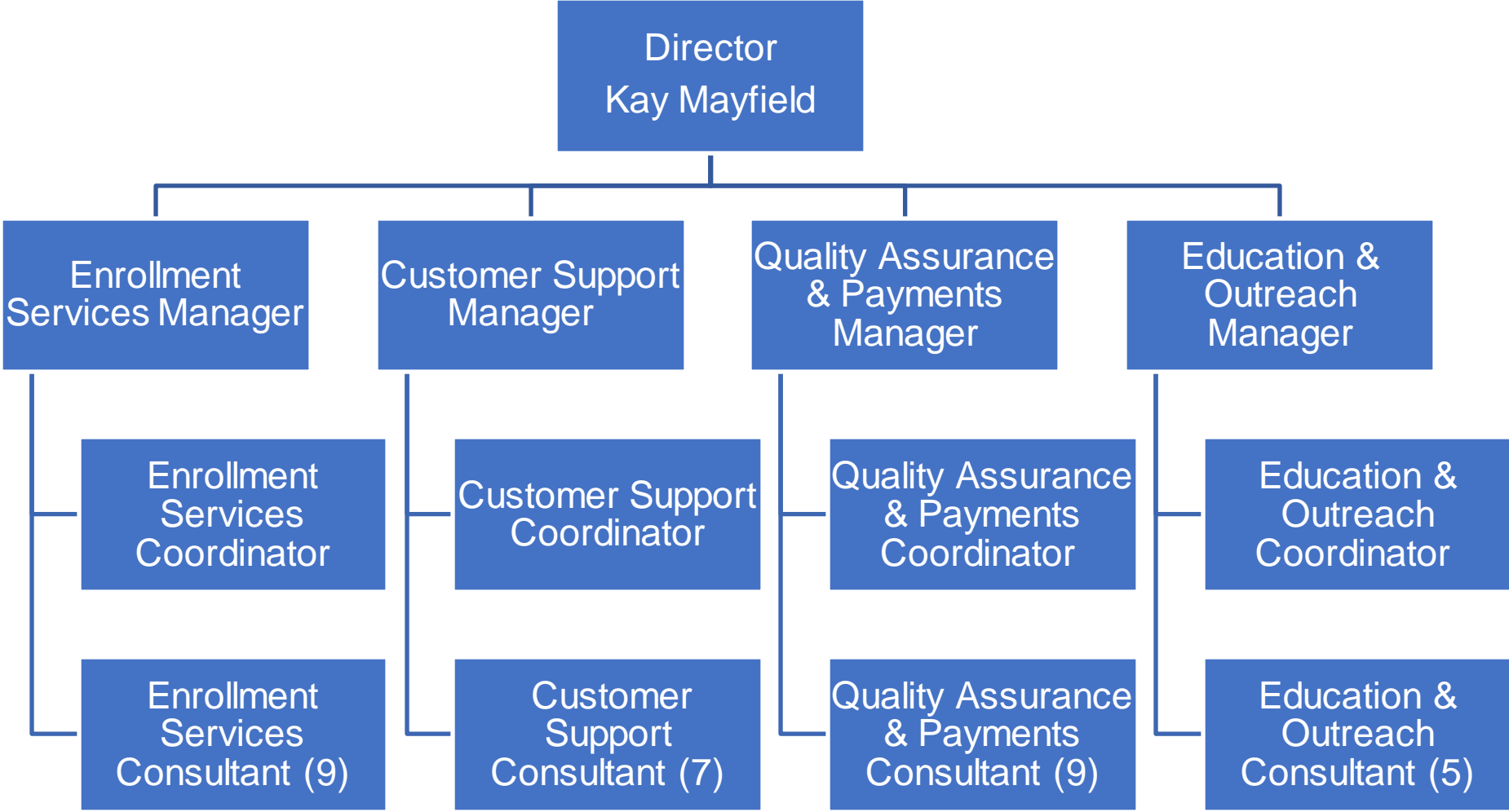
Customer Support

Quality Assurance and Payments

Education and Outreach



# Organizational Structure of Provider Relations Functional Area



# Enrollment Services

---



- Enroll new Providers
- Complete annual renewal
- Transfer Change of Ownerships
- Review all rate increase requests
- Coordinate with QIP Division on Quality Rated Tier and status requests





# Customer Support

- Serve as first point of contact for all Provider calls
- Act as Tier 1 support for system issues
- Act as Tier 1 support for billing, payment, & scholarship issues
- Work with Constituent Services regarding Provider issues
- Make minor updates to Provider information
- Obtain and update school system calendars in system





# Quality Assurance & Payments



Conduct	Conduct complex research on Provider profile, payment, or scholarship issues
Conduct	Conduct quality assurance on attendance tracking and payments for 25% of all Providers monthly
Receive and review	Receive and review Provider invoices for payment and act as liaison between DECAL Finance and payment vendor
Complete	Complete Family Child Care Learning Center capacity reviews
Track	Track recoupments based on Audits and Compliance reviews



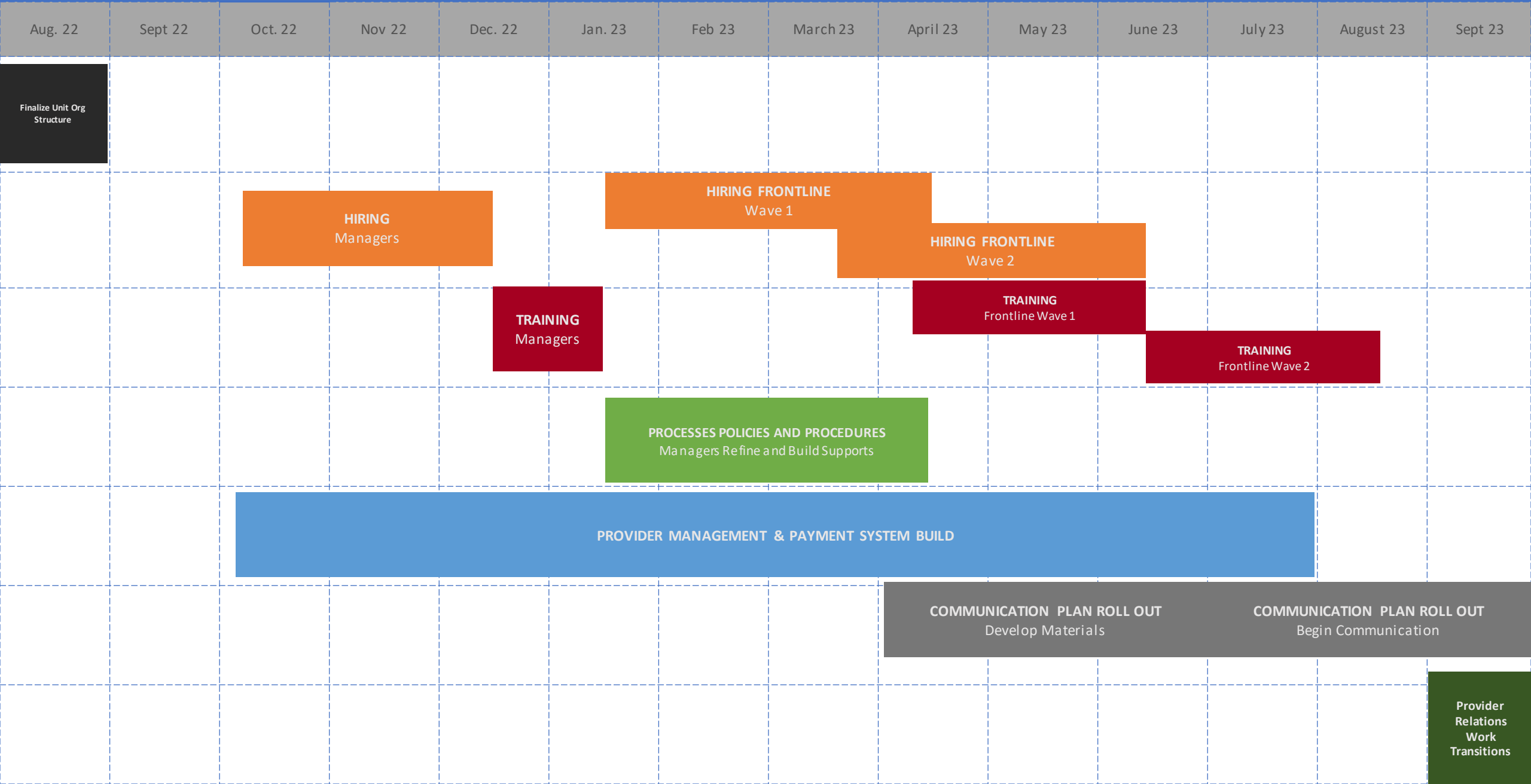


# Education & Outreach

---

- Develop training content for providers
- Conduct new provider orientations
- Conduct ongoing provider training
- Represent Provider Relations at community events
- Conduct outreach to newly licensed centers to discuss CAPS participation
- Develop resource material for providers
- Conduct Technical Assistance visits

# PROVIDER RELATIONS IMPLEMENTATION TIMELINE



The following Committee meetings are in session:

**Programs and Rules** – Hickory Conference Room

**Budget and Finance** – Cypress Conference Room

**Quality Innovations and Partnerships** – Oak Conference Room

*The Public Comment Period will commence at 1:00 pm.*



**Georgia Dept  
of Early Care  
and Learning**  
BRIGHT FROM THE START

Welcome to the Board of Early Care  
and Learning

# Public Comment

February 16, 2023



**Georgia Dept  
of Early Care  
and Learning**

BRIGHT FROM THE START





Georgia Dept  
of Early Care  
and Learning  
BRIGHT FROM THE START

# Board Meeting Dates 2023

- 
- ~~February 16, 2023~~
  - May 18, 2023
  - August 24, 2023
  - November 16, 2023

