

Welcome to the Board of Early Care and Learning

August 26, 2021



**Georgia Dept
of Early Care
and Learning**

BRIGHT FROM THE START

DECAL August 26 Board Meeting: Webinar 101

For Board Members:

- Board meeting is audio only.
- You can mute and unmute yourselves.
- Report any sound or technology issues using the chat box, and a DECAL staff member will assist you.

For General Public:

- You will remain muted.
- The agenda does not include a Q&A session; this is standard for board meetings.
- The agenda does include a public comment period. Public may type comments in the chat box. Public comments will be shared with the Board.
- Minutes will be posted at a later date. Board Summary will be posted within seven business days.
- PowerPoint presentation will also be posted.

Helpful Hints from Randy Hudgins.



Board Meeting Welcome

Phil Davis, Board Chair



**Georgia Dept
of Early Care
and Learning**

BRIGHT FROM THE START

Approval of Agenda and Minutes

- Approve 08-26-21 agenda
- Approve 05-20-21 minutes



**Georgia Dept
of Early Care
and Learning**
BRIGHT FROM THE START

Commissioner's Updates

Amy M. Jacobs, Commissioner



Georgia Dept
of Early Care
and Learning
BRIGHT FROM THE START

Coronavirus Aid, Relief, and Economic Security (CARES) Act



\$144 million in emergency funding through CCDBG to help states provide child care assistance to frontline workers and to stabilize the child care market.

- **\$122 million** for STABLE payments to licensed child care providers.
- **\$19 million** for CAPS emergency policy payments.
- **\$3 million** for the CAPS Essential Services Workforce priority group.

Fully liquidated by April 2021.



Coronavirus Response and Relief Supplemental Appropriations (CRRSA) Act

\$403 million for DECAL to build on initiatives from the CARES Act.

- Relief for families paying for child care and help for child care providers to support the cost of providing care and remaining open
 - **\$17 million** - CAPS ACCESS child care supplement (ongoing through 9/30/22)
 - **\$37 million** - POWER: Providing Our Workforce Essential Recognition
 - **\$43 million** - STABLE: Short Term Assistance Benefit for Licensed Entities
 - **\$5 million** - School Age Grants





American Rescue Plan Act

\$1.57 billion for DECAL to continue to support Georgia's early childhood and education system.

- **\$604 million** for child care assistance activities
- **\$968 million** for a child care stabilization program
- Developing new round of STABLE to meet ARPA requirements
- Developing stakeholder engagement plan



POWER Payments



Providing Our Workforce
POWER
Essential Recognition



2021-2022 DECAL Scholars of the Year



Ms. Edelina Lane
Point University

Family Child Care Provider



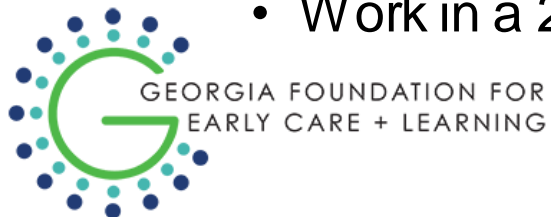
Ms. Quinecia Styles Smith
West Georgia Technical College

Lead Teacher at Parker Chase
Preschool North



Early Educator of the Year Program

- Early Educators of the Year will serve as ambassadors for early childhood education.
- Winners will be chosen from three divisions:
 - Infant Teacher (birth-18 months)
 - Toddler Teacher (18-36 months)
 - Preschool Teacher (36-48 months)
- Must meet the following criteria:
 - Credentialed lead teacher of the age-specific classroom
 - A minimum of 3 years as a lead teacher
 - Plan to continue as lead teacher for the next year
 - Work in a 2- or 3-star Quality Rated center that is in good standing with DECAL



Finance, Legislative, & Administrative Updates

Rian Ringsrud, Deputy Commissioner for Finance & Administration



Georgia Dept
of Early Care
and Learning
BRIGHT FROM THE START

Finance Update – SFY 2021 Summary

Budget Comparison

Data as of June 30th Budget Expenditures* Remaining Balance % Remaining

BY PROGRAMS

Child Care Services	\$520,475,606	\$520,475,604	\$2	0%
Pre-K + (HS)	\$378,868,700	\$375,780,642	\$3,088,058	1%
Quality Initiatives	\$46,081,079	\$46,081,076	\$3	0%
Nutrition	\$138,740,079	\$138,740,078	\$1	0%
Total	\$1,084,165,464	\$1,081,077,400	\$3,088,064	0%

BY FUNDING SOURCE

State General	\$54,555,132	\$54,555,132	\$0	0%
State Lottery	\$378,701,910	\$375,613,852	\$3,088,058	1%
Federal	\$650,100,877	\$650,100,872	\$5	0%
Other	\$807,545	\$807,544	\$1	0%
Total	\$1,084,165,464	\$1,081,077,400	\$3,088,064	0%

* Includes encumbrances.

Finance Update
SFY 2021 Budget
Summary – Q4



AFY2022 and FY2023 – Budget Request

Department of Early Care and Learning	Current FY22 Budget	Proposed AFY22 Budget	Proposed FY23 Budget
BY PROGRAM			
Child Care Services	\$324,018,848	\$324,018,848	\$324,018,848
Pre-K + (HS)	\$382,734,866	\$382,734,866	\$382,734,866
Quality Initiatives	\$57,827,234	\$57,827,234	\$57,827,234
Nutrition	\$148,000,000	\$148,000,000	\$148,000,000
Total	\$912,580,948	\$912,580,948	\$912,580,948

BY FUNDING SOURCE			
State General	\$57,726,235	\$57,726,235	\$57,726,235
State Lottery	\$382,559,866	\$382,559,866	\$382,559,866
Federal	\$471,959,847	\$471,959,847	\$471,959,847
Other	\$335,000	\$335,000	\$335,000
Total	\$912,580,948	\$912,580,948	\$912,580,948

Finance Update AFY2022 and FY2023 Budget Request



Summer Food Service Program Wrap-Up

FY 2021 (*October 2020–August 2021*):

- Meals Served: 8,960,372*
- Meal Sites: 1,001
- Sponsors: 71
- Counties: 84

**Meals served in August 2021 estimated because all August claims have not been submitted.*



CACFP Emergency Operational Costs Reimbursement Program

- Reimburses program operators for costs incurred during March 2020-June 2020.
- DECAL's application and implementation plan have been approved.
- Award amount = \$15.1 million (99% will be paid out to program operators)
- Funds will be distributed to eligible institutions by 9/30/21.

Additional funds to
Child and Adult Care
Food Program
(CACFP) operators
for operating costs
they incurred during
the public health
emergency.



Georgia's Pre-K and Instructional Supports Updates

Susan Adams, Deputy Commissioner for Georgia's Pre-K and Instructional Supports



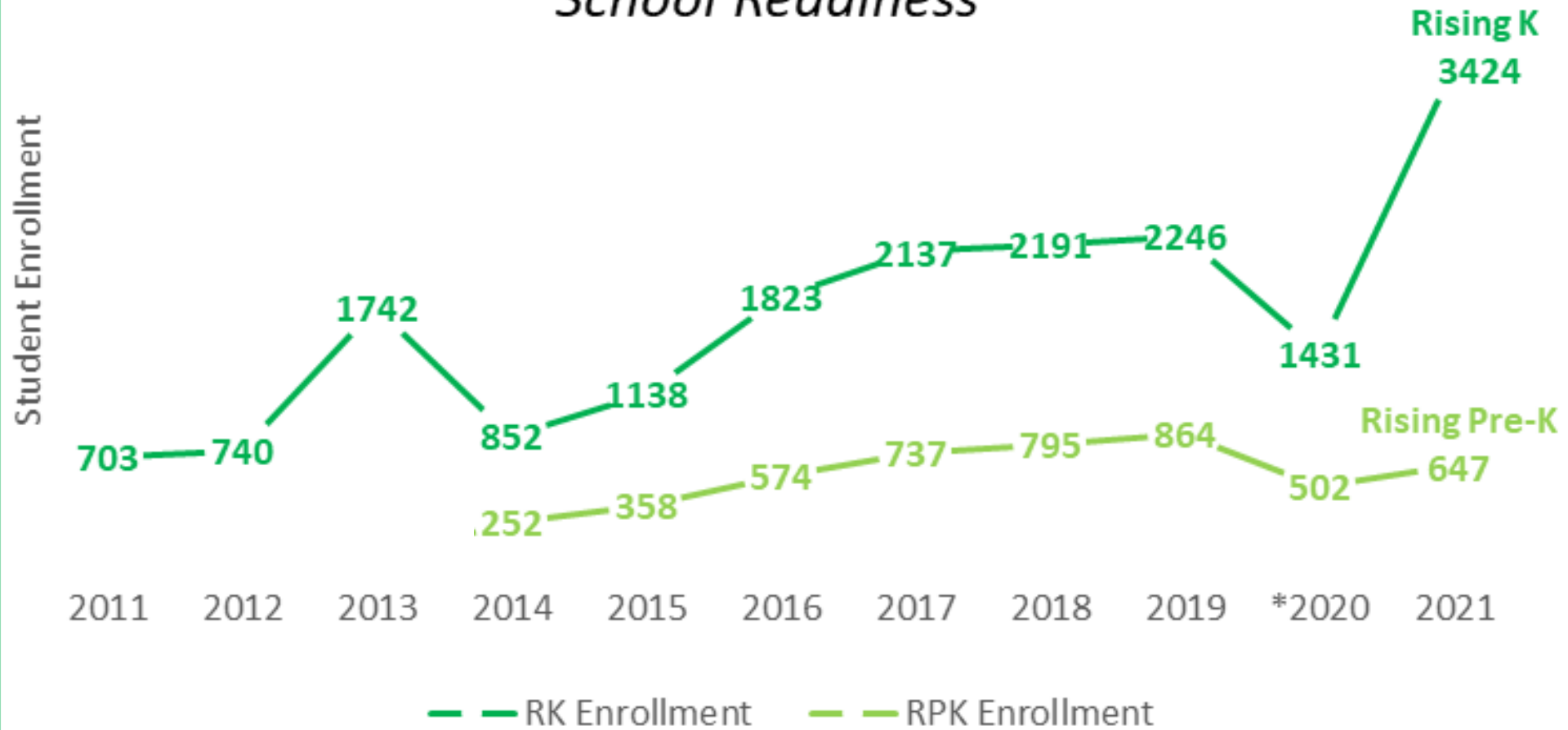
Georgia Dept
of Early Care
and Learning
BRIGHT FROM THE START

Summer Transition Program 2021

- Six-week onsite program for Rising Pre-K and Kindergarten students
- Lower class size (12 for Rising K, 10 for Rising Pre-K)
- To increase the number eligible for the program, some eligibility requirements modified for this summer:
 - No family income requirement
 - Students who attended a hybrid or full distance classroom model during the 2020-2021 school year were eligible.
- \$500 bonus for STP teachers and transition coach



Significant Increase in STP Enrollment to Support School Readiness





*Everything was truly amazing.
I love the workshops and the
material that was shared. It helped
me prepare and understand how to
help my child be successful in
kindergarten.*

Mother, Paulding Prep Academy



#GaPreKFirstDay



Tips from Teachers



Georgia's Pre-K Program 2021-2022

- 84,000 slots
- Additional \$3,908,552 in Pre-K grants budget
 - Increase to support higher teacher credentials: \$763,710
 - Increase to support lead teacher supplements: \$712,138
 - Increase in TRS for public school certified teachers: \$600,462
 - 2.5% Increase to non-instructional operating: \$1,748,849
- In-person model
- Covid-19 mitigation strategies
- Teacher waivers



Celebrate Georgia's Pre-K Week: October 4th - 8th



#PlantingtheSEEDSforaSuccessfulYear

GEORGIA

SEEDS

FOR SUCCESS



- Behavior Tip Tuesdays
- Teacher Testimonials and Specialist Spotlights
- Resources – SEEDS Quick Tips, Inclusive Practice Tips and more
- Social emotional contest and provider prizes!





WELCOME



Behavior Tip Tuesdays: Setting Clear Expectations

Provided by:

The Inclusion and Behavior Support Program
Georgia Department of Early Care and Learning

On the next ...

DECAL Download

New Episodes Every Wednesday!

This Week's Guests



Allison O'Hara
Inclusion and Behavior Support
Program Director



Peggy Sutton
Inclusion and Behavior
Support Specialist

This Week's Topic:

Planting the SEEDS for a Successful School Year

Subscribe to #DECALDownload wherever you stream podcasts!



Helping Children Transition Between Activities

For some young children, moving from one activity to another (e.g., playing with toys to dinner time, playing outside to bath time, watching a movie to brushing teeth), results in confusion, frustration, or challenging behaviors. Adults can help children predict what is coming next which helps make transitions smoother.

Strategies to Support Transitions



Use a timer (e.g., Show timer and say, "5 minutes of play and then dinner.").



Provide a verbal warning that one activity is going to end and another is going to begin (e.g., "We'll finish this book, then brush our teeth and go to bed.").



Ask your child if they would like to bring a transition object or toy with them (e.g., "How about truck comes in the car with us? I bet he would live to sit next to your car seat!").



Use first/then language (e.g., "First clean up your dishes, then we can play blocks together." or "First wash your hair, then play in the bath.").



Use visual supports.

- visual schedule
- first/then board
- cue cards



Download instructions and templates at:
https://challengingbehavior.cbcs.usf.edu/docs/Routine_cards_home.pdf



Make the transition fun! (e.g., If you need to leave the park, try these: "We can skip to the car.", or "Ride on daddy's shoulders to the car.").



Sing a silly or familiar song; most children love music and songs. Use technology to help you get creative. Many personal devices and applications will play clean up songs (e.g., Alexa, Spotify, etc.) and YouTube has many transition songs and videos available for preschool children to help you!



Give your child a job to do during the transition. Children like to be helpers! Your child can:

- put napkins on the table while you get ready for dinner;
- put all the shoes away when you get home; or
- be the "checker" who makes sure everyone has their backpacks before going to school.



National Center for Pyramid Model Innovations | ChallengingBehavior.org

The reproduction of this document is encouraged. Permission to copy is not required. If modified or used in another format, please cite original source. This is a product of the National Center for Pyramid Model Innovations and was made possible by Cooperative Agreement #H326870003 which is funded by the U.S. Department of Education, Office of Special Education Programs. However, those contents do not necessarily represent the policy of the Department of Education, and you should not assume endorsement by the Federal Government.

Pub: 11/04/20

INCLUSION & BEHAVIOR SUPPORT UNIT PRESENTS: THE POWERFUL IMPACT OF COACHING



Robin Howard
Sunbrook Academy
Lead Pre-K teacher

How were/are your students being impacted by the coaching support that you received?

“The students were able to sit [for] longer periods during circle and story time which increased their learning.”

INCLUSION AND BEHAVIOR SUPPORT SPECIALIST SPOTLIGHT



Fachelle Garner
Inclusion and Behavior Support Specialist
North West Region

The children are always my why. To see the gears move, the lightbulb come on or the ah-ha moments that come from children and teachers is my motivation to continue to reach as many as possible through coaching and training.

The biggest reward I've experienced as a coach is learning from teachers. I feel that I learn just as much as I teach when I coach, and I use this knowledge to help other teachers.

Call the helpline when you:

- Need help addressing challenging behavior
- Need information about child referrals
- Have questions about coaching support on classroom practices related to SED or Inclusion
- Are interested in training on inclusion or social emotional training

1.833.354.HELP

GEORGIA SEEDS for SUCCESS



inclusion@dec.al.ga.gov



Quality Innovations and Partnerships Updates

Bentley Ponder, Deputy Commissioner for Quality Innovations and Partnerships



Community Transformation Grants



- **\$75,000** grants awarded to communities to design and implement an initiative that addresses a key “focus area”
- Focus areas defined by Georgia’s PDG B-5 Needs Assessment
- 34 community organizations submitted letters of interest
 - 20 invited to apply; 18 applied
- Eight community organizations selected as grantees



Community Transformation Grants

Laura Wagner, Community Outreach and Partnerships Director

Jill O'Meara, Community Partnerships and Projects Manager



**Georgia Dept
of Early Care
and Learning**

BRIGHT FROM THE START

Community Transformation Grantees

Communities in Schools - Milledgeville/Baldwin County

- Focus area: Increasing access to high-quality early childhood programs for children living in rural areas of Georgia
- Baldwin County



Cook County Family Connection Partnership

- Focus area: Reducing food insecurity for children birth through five and their families
- Cook County



Community Transformation Grantees, *continued*

Georgia Organics

- Focus area: Reducing food insecurity for children birth through five and their families
- Ware County



Greenbriar Children's Center

- Focus area: Providing mental health services for the birth through five population and their caregivers
- Chatham County



Community Transformation Grantees, *continued*

Gwinnett Building Babies' Brains

- Focus area: Increasing access to high-quality early childhood programs for infants and toddlers (6 Weeks to 36 months)
- Gwinnett County



Quality Care for Children

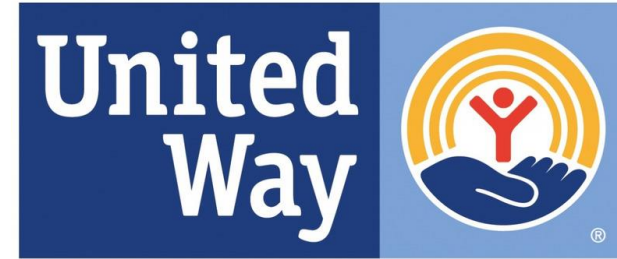
- Focus area: Reducing food insecurity for children birth through five and their families
- Clayton County



Community Transformation Grantees, *continued*

United Way of Central Georgia

- Focus area: Increase access to high-quality early programs for dual language learners (6 weeks up to kindergarten entry)
- Bibb, Crawford, Macon, and Peach counties



United Way of Central Georgia

University of West Georgia College of Education Early Learning Center

- Focus area: Supporting children with persistent challenging behaviors to reduce suspensions and expulsions from early learning programs
- Carroll, Haralson, and Heard counties



EARLY LEARNING CENTER
COLLEGE OF EDUCATION

Innovation in Teaching, Leadership, and Wellness



Quality Rated Review

- All 2021 ratings will be awarded via the Temporary Alternate Rating Option (TARO).
- TARO includes three options for providers to become rated.
 - Option A: Portfolio Only (1 star, 1 year)
 - Option B: Portfolio + QRVP (1 or 2 stars, 2 years)
 - Option C: Portfolio + QRVP + LO-VE (1, 2, or 3 stars, 2 years)
- January – March 2022: Training and reestablishing reliability rechecks for live observations with QR team.





Quality Rated is on track to rate more than **1,400** programs in 2021

	Option A	Option B	Option C
Cohort 1	76	51	8
Cohort 2	200	149	38
Cohort 3	165	95	67
Cohort 4	391	76	94
Totals	832	371	207

**Numbers in blue are estimates.*



The deadline for the
CAPS/QR goal is
December 31, 2021.





Timeline for families to transition to Quality Rated providers

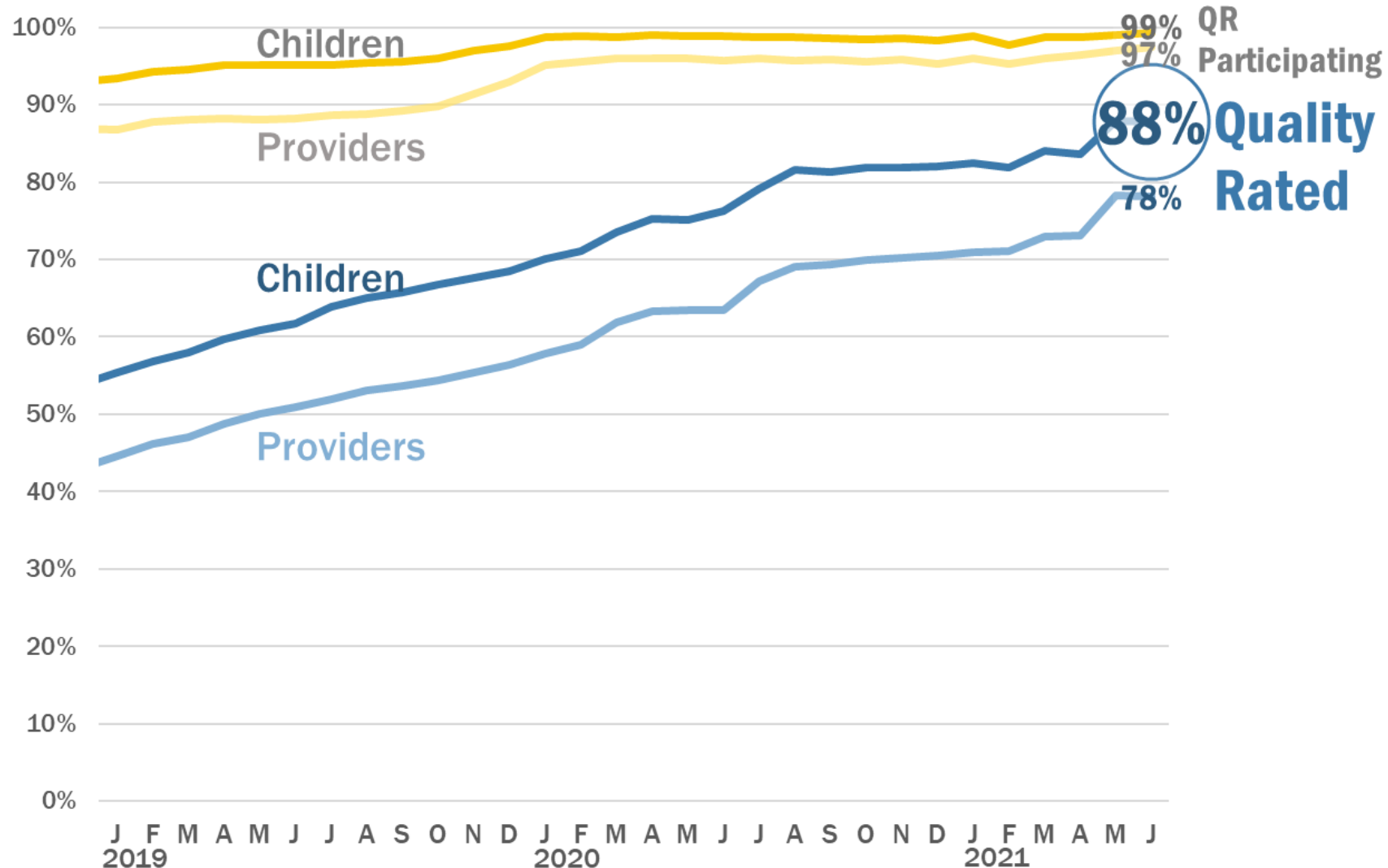


After **August 1, 2021**, new families may select only QR providers or those signed up for a cohort.

If provider not star rated or in the process to complete their rating, families move to QR provider at next renewal after **January 1, 2022**.

Deadline for providers to be rated is **December 31, 2021**.

88% of children receiving CAPS are at a Quality Rated provider.



As of August 4,
419 children in 99
programs are receiving
care at programs **not**
on track to be
Quality Rated.

1. Of the 99, 73 are centers and 26 are family providers.
2. 49 of the 73 providers have five or fewer children in CAPS.
3. This is less than 1% of children in CAPS
4. QR and CAPS did everything possible to reach out to providers to inform them of the milestones. 34 providers were added to a 2021 cohort last week, and 174 have been added since June.



DECAL EHS Grant Restructuring Overview: “The What”



**Georgia Dept
of Early Care
and Learning**
BRIGHT FROM THE START

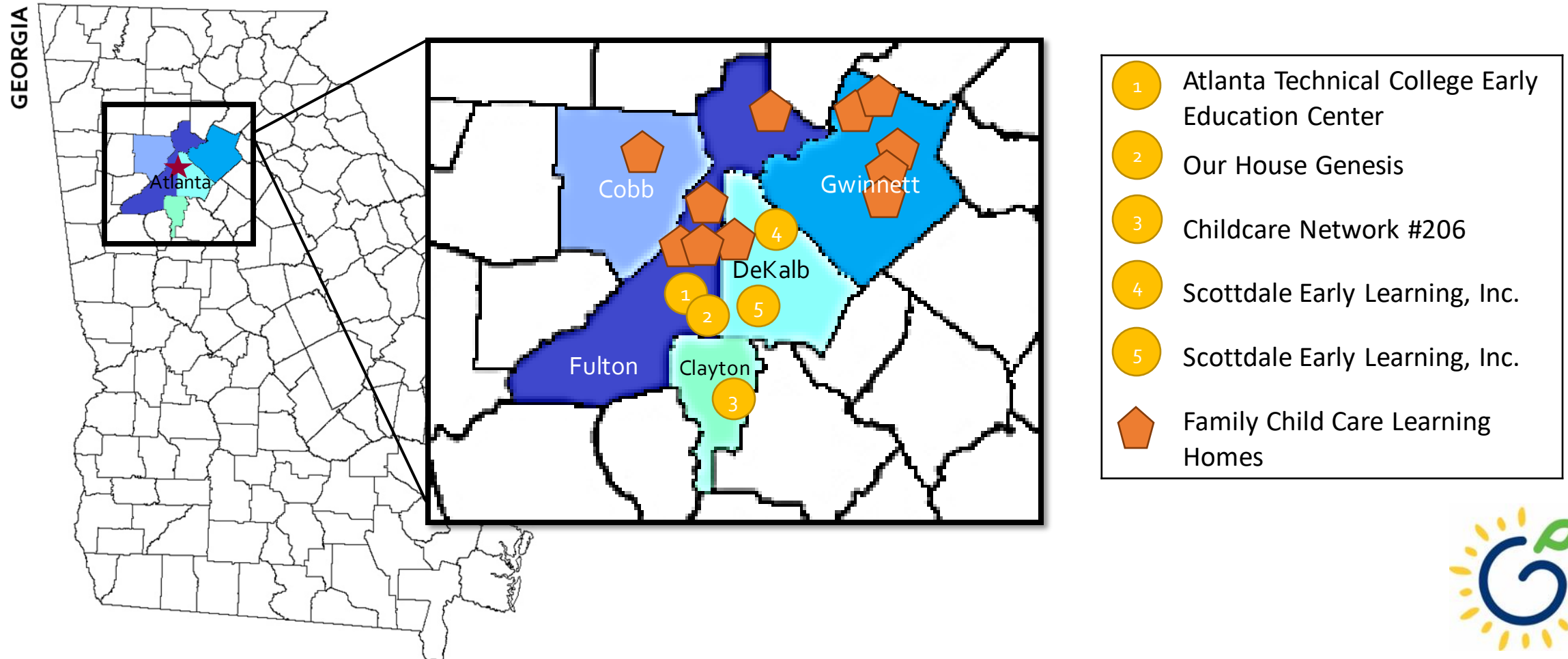
DECAL's Early Head Start Partnership (DEHSP)

- DECAL is an Early Head Start – Child Care Partnership grantee
 - Partnership is funded for 184 slots
 - Uses a “Hub” system
- Focus Area Two Review went well; no major findings
- Director search almost complete
- DECAL is restructuring the administrative structure of the grant
 - Will bring more duties in-house
 - Is supported by empirical data
 - Process and content of restructuring went through multiple stages and reviews



DEHSP Child Care Partners

Child care partners deliver high-quality services that adhere to the research-based [Head Start Program Performance Standards](#) (HSPPS). This map is current as of May 2021.



Overview

- DECAL will be the administrative home for many EHS comprehensive services.
 - Oversight and management of comprehensive services for child care learning center partners will be housed at DECAL.
 - Family Support and Education Support DECAL staff will manage service delivery.
- QCC will transition from “hub” to managing Family Child Care Learning Home Network.
 - QCC will provide bilingual support to child care learning centers as needed and approved by DECAL’s EHS Operation Manager.
- Budgeting for child care learning centers will also change. Will receive core service “per child amount” plus additional funds for supporting DECAL in delivering comprehensive services.



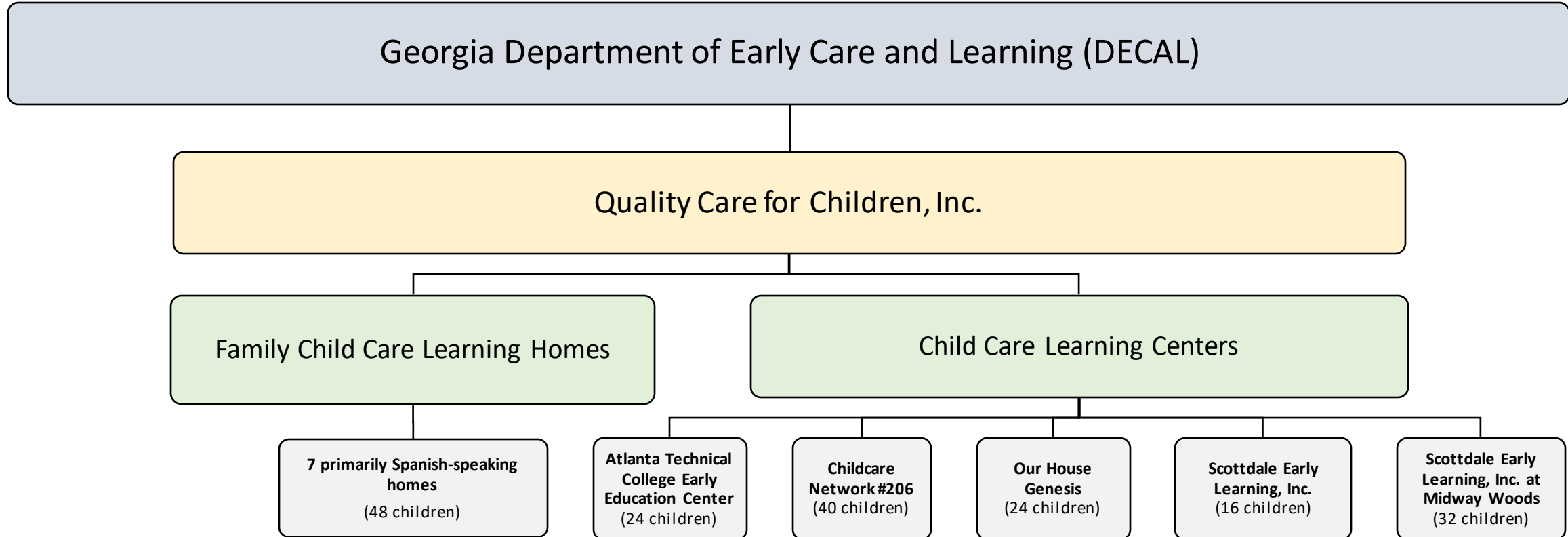
DEHSP Restructuring Goals

- **Strengthen direct services** for children and families, including expanding 2Gen activities within the project
- **Raise quality** of partner programs
- **Expand the reach** of the DEHSP
 - e.g., Increase the number of participating family child care learning homes
- **Increase alignment** between DEHSP and other DECAL programs
 - e.g., infant/toddler, research
- **Promote innovations** that enable us to “scale-up” and that can benefit other ECE programs



DEHSP Current Model (Hub Approach)

Serves 184 children and families across metro Atlanta

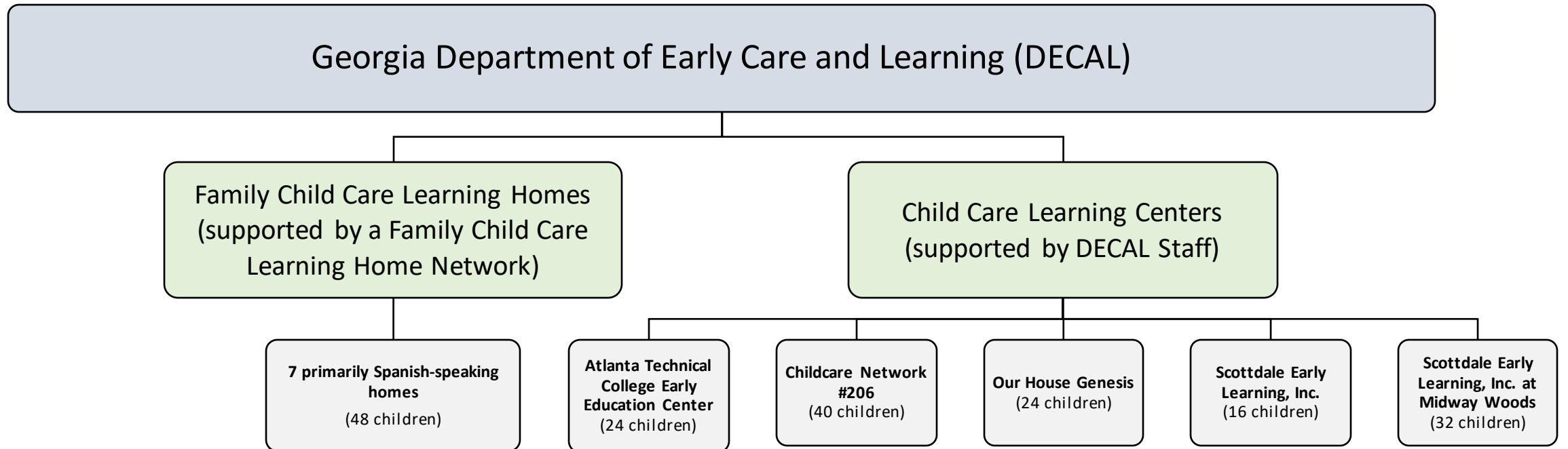


All family child care learning homes and child care centers have achieved a 2- or 3-star rating through Quality Rated.



Restructured Model

Serves 184 children and families across metro Atlanta



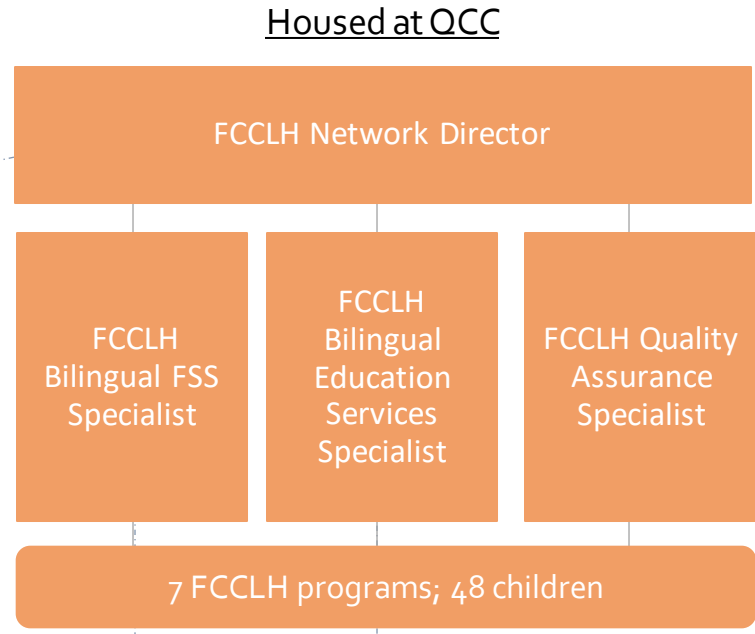
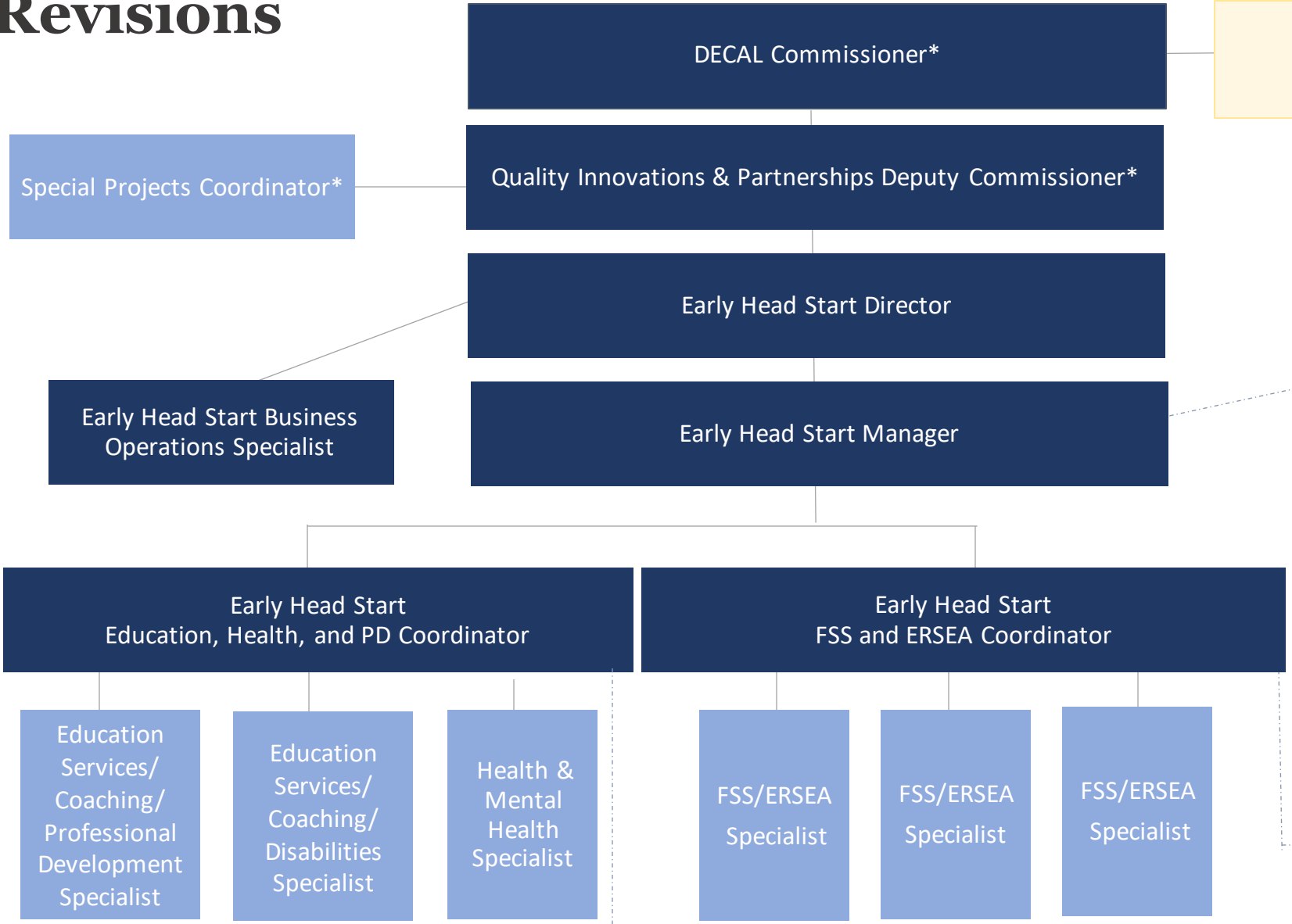
All family child care homes and child care centers have achieved a 2- or 3-star rating through Quality Rated.



Proposed Early Head Start Partnership Structure Revisions

LEGEND

- Light blue boxes represent a new position
- * Asterisks located after a position represent staff members not funded or only partially funded through the grant.



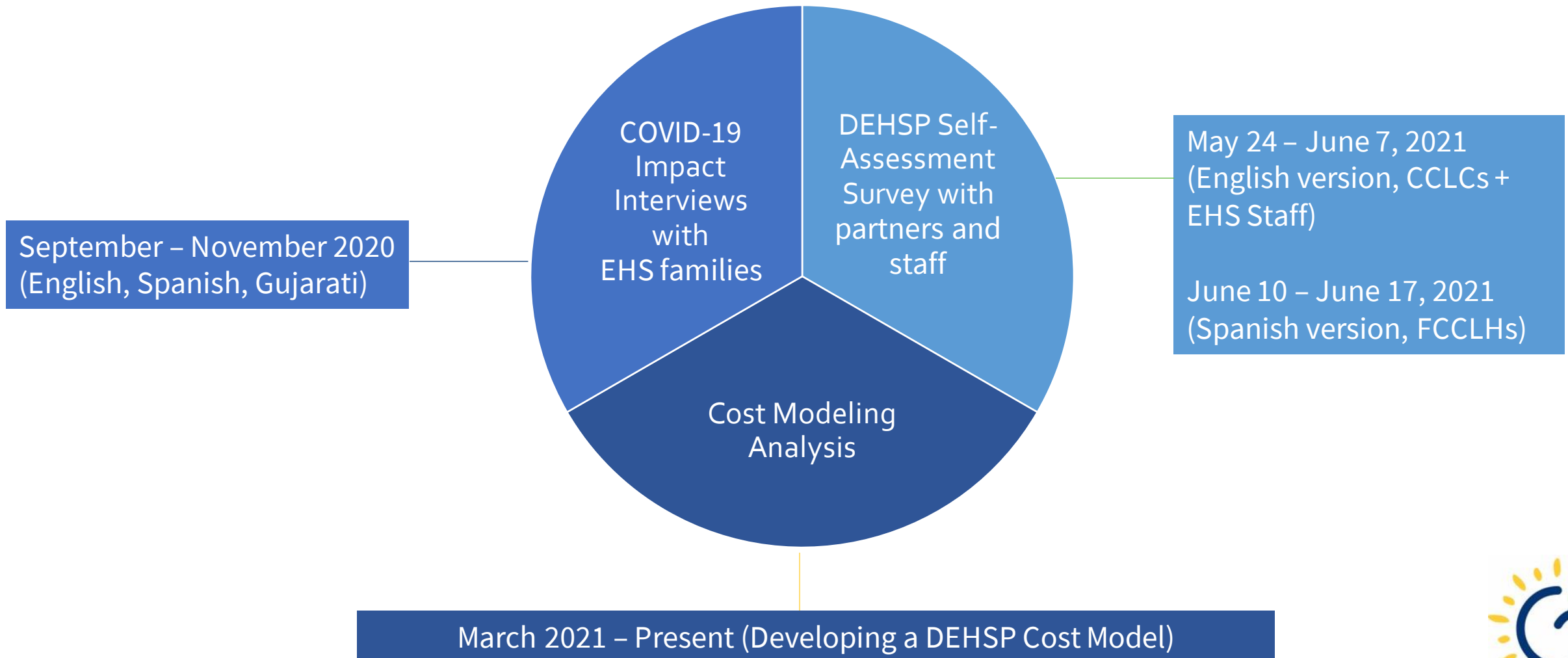
5 CCLC partners; 20 classrooms, 136 children

Reasons for Restructuring: The Why



**Georgia Dept
of Early Care
and Learning**
BRIGHT FROM THE START

DEHSP 2020-2021 Self-Assessment Activities



Cost Modeling Analyses

- Currently working with Third Sector Intelligence (3Si), a data analytics company, to develop a cost model for the DEHSP
- The goal: **to standardize budget development and increase sustainability of the partnership while continuously improving quality** for children and families served by the DEHSP
- The analysis will yield a cost model for:
 - Core child care services at CCLCs
 - Core child care services at FCCLHs
 - Non-core child care services (“the EHS layer”)
- Preliminary conclusions
 - Currently, “the EHS layer” primarily funds management and quality assurance rather than direct services. Restructuring the DEHSP will allow allocation of more funds to direct services.



Estimated Non-Core Child Care Services Cost

<u>DEHSP Functional Capacities</u>	<u>Total Cost*</u>	<u>Total FTEs**</u>	<u>Weekly Cost per Child</u>
1. Core Child Care Services	\$0	0	\$0.00
2. ERSEA	\$184,498	2.55	\$19.28
3. Education & Child Development	\$514,932	7.6	\$53.82
4. Health/Mental Health Services	\$194,017	1.6	\$20.28
5. Family and Community Engagement	\$368,294	5.55	\$38.49
6. Transition Services	\$96,173	1.4	\$10.05
7. Management and Quality Assurance	\$1,270,941	9.6	\$132.83
	\$0	0	\$0.00
Total:	\$2,628,854	28.3	\$274.75

*Total cost estimates includes the contribution from CAPS payments to providers for core child care services

**Total FTEs does not include Core Child Care Services Staff (Teachers, Assistant Teachers, Center Director, etc.)

<u>Cost Allocation by Partner Layer (Budget)</u>	<u>Total Cost</u>	<u>Total FTEs</u>
DECAL	\$641,366	5
Hub	\$1,433,519	13.3
Provider	\$553,970	10
	\$0	0
Total:	\$2,628,854	28.3



“The EHS Layer”



CURRENT ESTIMATE

DEHSP Functional Capacities	Total Cost*	Total FTEs**	Weekly Cost per Child
Core Child Care Services	\$0	0	\$0.00
ERSEA	\$184,498	2.55	\$19.28
Education & Child Development	\$514,932	7.6	\$53.82
Health/Mental Health Services	\$194,017	1.6	\$20.28
Family and Community Engagement	\$368,294	5.55	\$38.49
Transition Services	\$96,173	1.4	\$10.05
Management and Quality Assurance	\$1,270,941	9.6	\$132.83
Total:	\$2,628,854	28.3	\$274.75

*Total cost includes CAPS payment contributions to providers for core child care services

**Total FTEs does not include Core Child Care Services Staff (Teachers, Assistant Teachers, Center Director, etc.)

Cost Allocation by Partner (Budget)	Total Cost	Total FTEs
DECAL	\$641,366	5
Hub	\$1,433,519	13.3
Provider	\$553,970	10
Total:	\$2,628,854	28.3

RE-ESTIMATED

DEHSP Functional Capacities	Total Cost*	Total FTEs**	Weekly Cost per Child
Core Child Care Services	\$0	0	\$0.00
ERSEA	\$182,451	2.4	\$19.07
Education & Child Development	\$355,501	3.7	\$37.16
Health/Mental Health Services	\$264,868	2.55	\$27.68
Family and Community Engagement	\$298,053	3.55	\$31.15
Transition Services	\$90,322	1.45	\$9.44
Management and Quality Assurance	\$1,007,618	6.65	\$105.31
Total:	\$2,198,812	20.3	\$229.81

*Total cost includes CAPS payment contributions to providers for core child care services

**Total FTEs does not include Core Child Care Services Staff (Teachers, Assistant Teachers, Center Director, etc.)

Cost Allocation by Partner (Budget)	Total Cost	Total FTEs
DECAL	\$1,212,410	11.5
Hub	\$706,017	4.3
Provider	\$280,385	4.5
Total:	\$2,198,812	20.3



Self-Assessment Survey Conclusions

- **CCLC partners** indicated there is too much paperwork, too many meetings, and a desire for DECAL to be more hands-on.
- **FCCLH partners** reiterated the importance of communicating policy and contract changes to them in a timely manner and desired more empathy and appreciation.
- A recurring sentiment across **CCLC and FCCLH partners** was that this is not a true partnership and that more clarity, organization, and communication at all levels is needed.
- **DECAL EHS and QCC hub staff** responses were mostly neutral or positive, suggesting a disconnect in how administrators view the DEHSP compared to child care partners.
- Most **child care partners and staff** are satisfied with the training and resources and agree that the DEHSP functioned well through the COVID-19 pandemic.



Possible Uses of Administrative Savings

- Increase mental health services (work with DECAL's new Infant and Early Childhood Mental Health Director)
- Create a staff retention support program
- Create a family child care learning home recruitment pilot
- Participate in family centered coaching
- Offer technology grants to programs
- Provide opportunities for Harvard Leadership Program for directors
- Facilitate review and revision of DEHSP policies
- Offer technology support to Policy Council members



DEHSP Commitment

- DECAL leaders recognize these are big changes and do not take these changes lightly. To that end:
 - DECAL will ensure that all partners have opportunities to provide feedback throughout the process. DECAL will “course correct” if need. DEHSP leaders will not assume “we have all the answers.”
- DECAL leaders will ensure that partners have a “voice” in how the administrative savings will be allocated. This includes for the current and subsequent years.
- DECAL will ensure that any staff funded by DEHSP but whose position is transferring to DECAL will be funded through December 31, 2021. This only includes the percentage funded by the grant.
- DEHSP leaders will work with other DECAL divisions to strengthen supports to providers, children, and families.



Federal Programs Updates

Elisabetta Kasfir, Deputy Commissioner for Federal Programs



Georgia Dept
of Early Care
and Learning
BRIGHT FROM THE START

Today's Topics

CAPS Initiatives Updates

Virtual Lobby

Customer Response Unit



SOLVE

- Effective June 30, 2021, SOLVE applications were no longer accepted for new families.
- DECAL has awarded **5,631** SOLVE scholarships.



ACCESS

- Awarding **Child Care Education Scholarships Supplements** was implemented May 17, 2021.
- CAPS families will not pay any tuition-related fees or co-payments between May 17, 2021 – October 2, 2022.
- Supports eligible Georgia families, negatively impacted by the pandemic, pay for child care.



CAPS Quality Rated 8/1 Milestone

Beginning **August 1, 2021**, families may only select a *new/different* provider that is **Quality Rated** or signed up for a cohort.

Recently
Passed



Beginning **January 1, 2022**, if existing provider is not **Quality Rated**, families must move to a QR provider at redetermination.



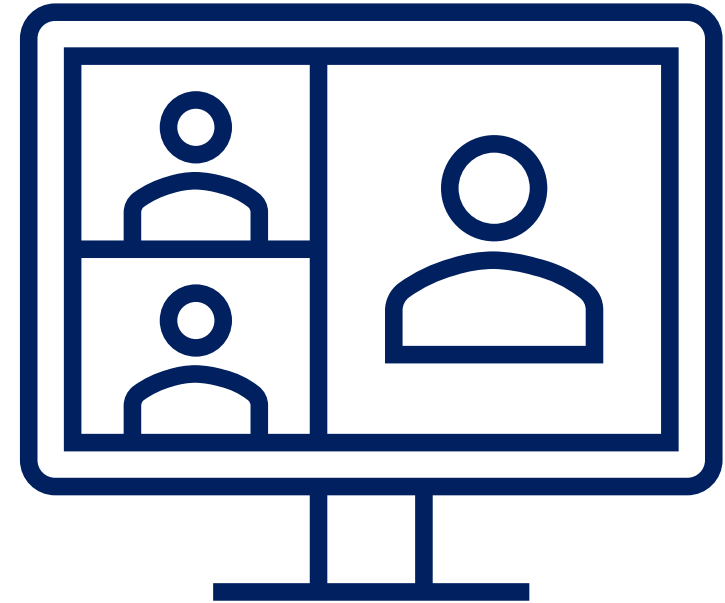
CAPS is on the MOVE!

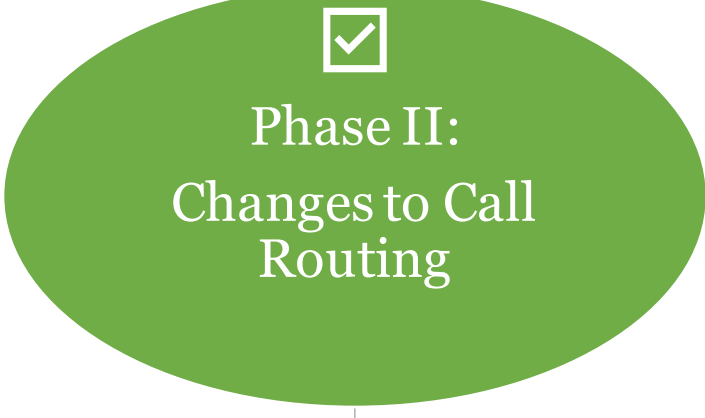


Georgia Dept
of Early Care
and Learning
BRIGHT FROM THE START

CAPS Virtual Lobby

Goal: Use technology to increase access, optimize the customer service experience, and continue meeting the needs of CAPS families and providers virtually.





Ways to Receive Virtual Support



CALL 1-833-4GA-CAPS

Automated response to questions

- Check renewal date
- Application status
- Request forms to be emailed

Speak to CAPS Customer Service

- Questions or concerns
- Schedule Virtual Appointment



Contact Us on CAPS Website

Submit requests for:

- Check renewal date
- Application status
- Request forms to be emailed

Speak to CAPS Customer Service

- Questions or concerns
- Schedule Virtual Appointment

What's ahead? **Live chat!**



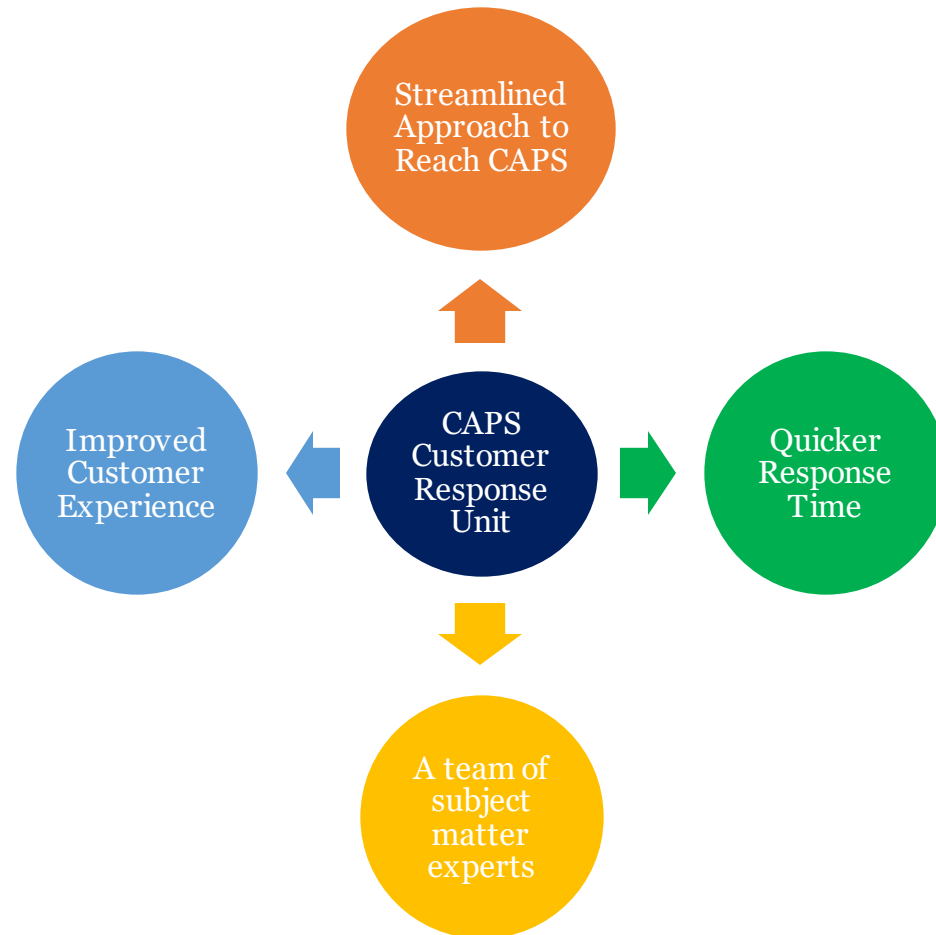
Customer Response Unit

Shawnell Johnson, CAPS Program Administration Director for Operations



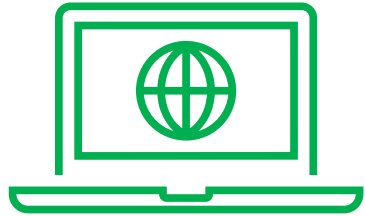
**Georgia Dept
of Early Care
and Learning**
BRIGHT FROM THE START

CAPS Customer Response Unit



CAPS Customer Response Unit

Point of contact for...



Web requests received through “Contact Us” on the CAPS website



Calls received for CAPS on 1-833-4GA-CAPS



Families who walk into the office after contacted by the CAPS Administrative Service Team





CAPS Customer Response Unit

What type of calls come into the phone line?

- General CAPS inquiries
- Application status
- Help with:
 - annual renewals
 - making case changes
 - uploading verification documentation in Gateway
 - locating a child care provider who accepts CAPS
- Information on how to become a CAPS provider
- CAPS provider support





**Coming
Soon**

Virtual Lobby Experience at Twin Towers

- Allows families to connect with CAPS staff virtually while in the office
- Staff in each unit of CAPS will rotate to support the Virtual Lobby
- Enhancements to the CAPS phone system
 - System generated FAQs



Child Care Services Updates

Pam Stevens, Deputy Commissioner for Child Care Services

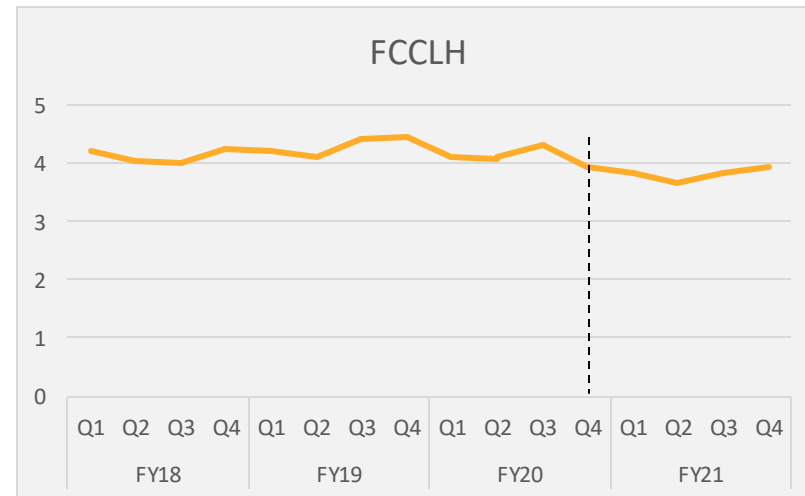
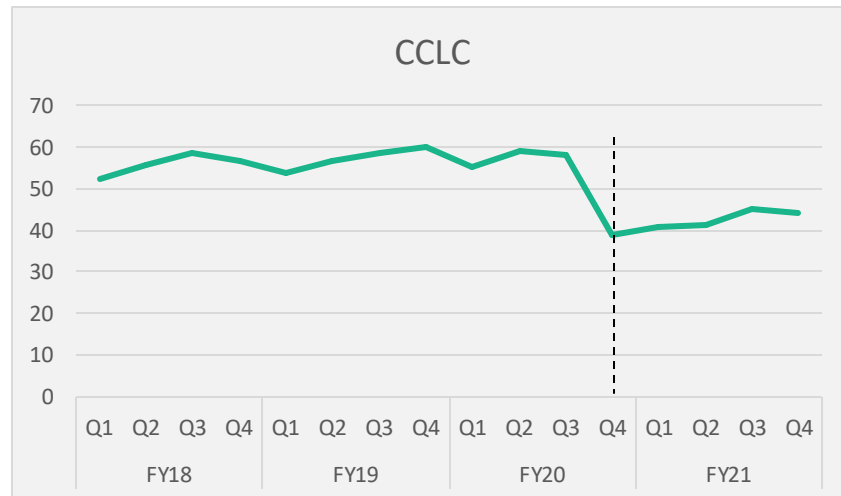


**Georgia Dept
of Early Care
and Learning**
BRIGHT FROM THE START

Current Landscape of Child Care

Average Number of Children Present per Provider						% Decrease since Previous Quarter
Provider Type	Quarter	FY18	FY19	FY20	FY21	
Child Care Learning Center (CCLC)	Q1	52.45	54.05	55.04	40.70	-26%
	Q2	55.59	56.92	59.23	41.29	-30%
	Q3	58.59	58.55	58.17	45.23	-22%
	Q4	56.87	60.22	39.03	43.67	12%
Family Child Care Learning Home (FCCLH)	Q1	4.21	4.21	4.14	3.86	-7%
	Q2	4.05	4.11	4.10	3.69	-11%
	Q3	4.03	4.43	4.34	3.83	-12%
	Q4	4.25	4.48	3.95	3.94	0%

- **12%** more children were recorded present at CCLCs in Q4 of 2021 compared to the same quarter of the previous year
- Average attendance at FCCLHs remained roughly the same
- Average attendance has increased but is not yet back to pre-pandemic levels.

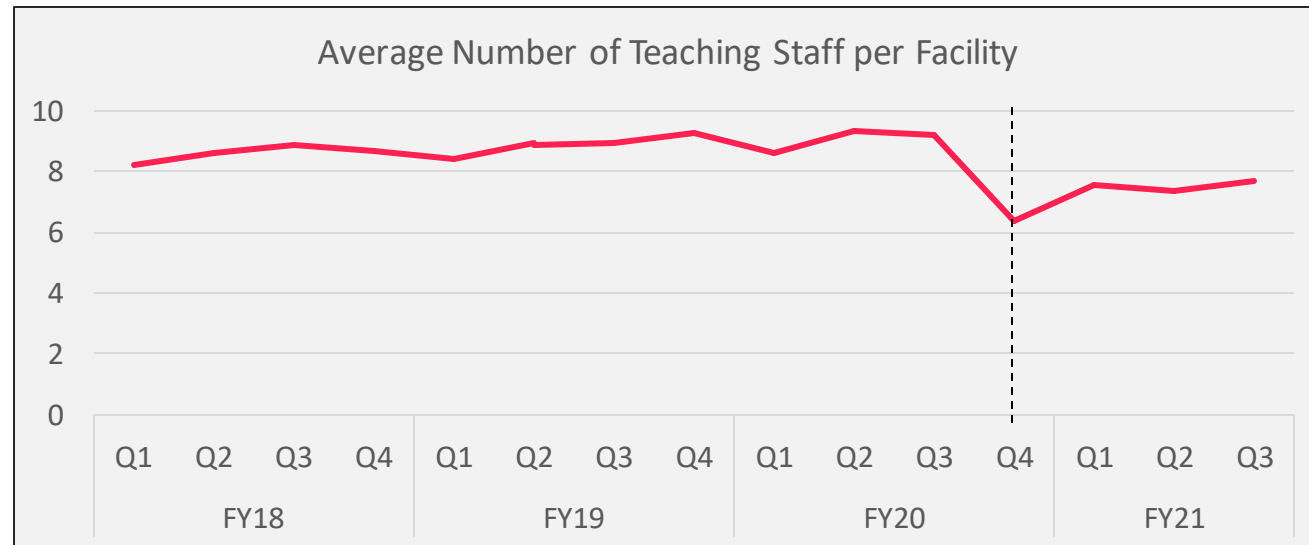


Current Landscape of Child Care

During the same time period, **16%** more staff were recorded present than the previous year.

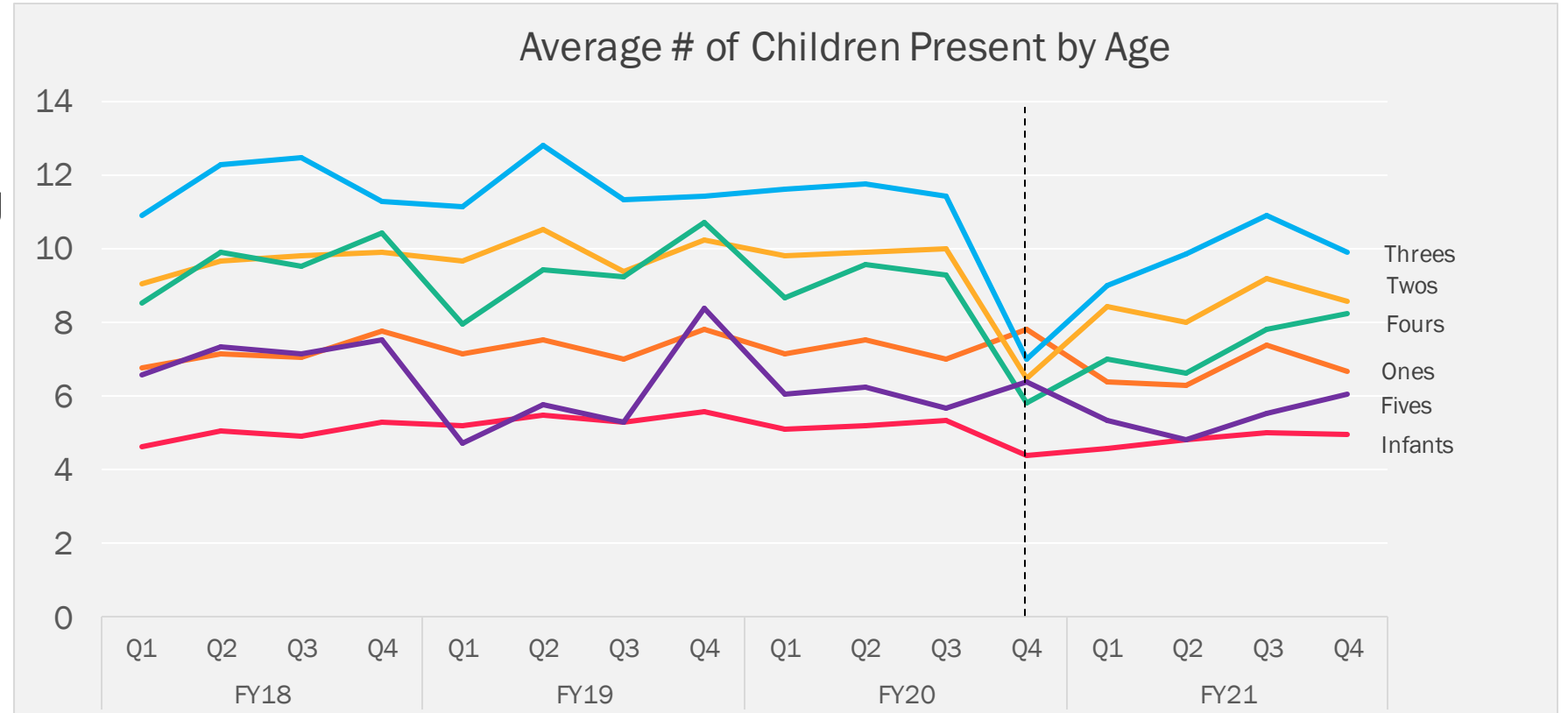
Again, while the average number of staff is rising, it is still not up to pre-pandemic levels

Average Number of Classroom Staff Present per Facility - CCLC					
Quarter	FY18	FY19	FY20	FY21	% Decrease
Q1	8.21	8.40	8.58	7.55	-12%
Q2	8.61	8.93	9.35	7.38	-21%
Q3	8.89	8.95	9.21	7.70	-16%
Q4	8.67	9.27	6.38	7.40	16%



Current Landscape of Child Care

- There was a smaller decline in the average number of children recorded present among younger age groups vs. older age groups.
- Four-year-olds remain further below the pre-pandemic average attendance rate than other age groups.



School-Age Help and Relief Effort

SHARE Grants

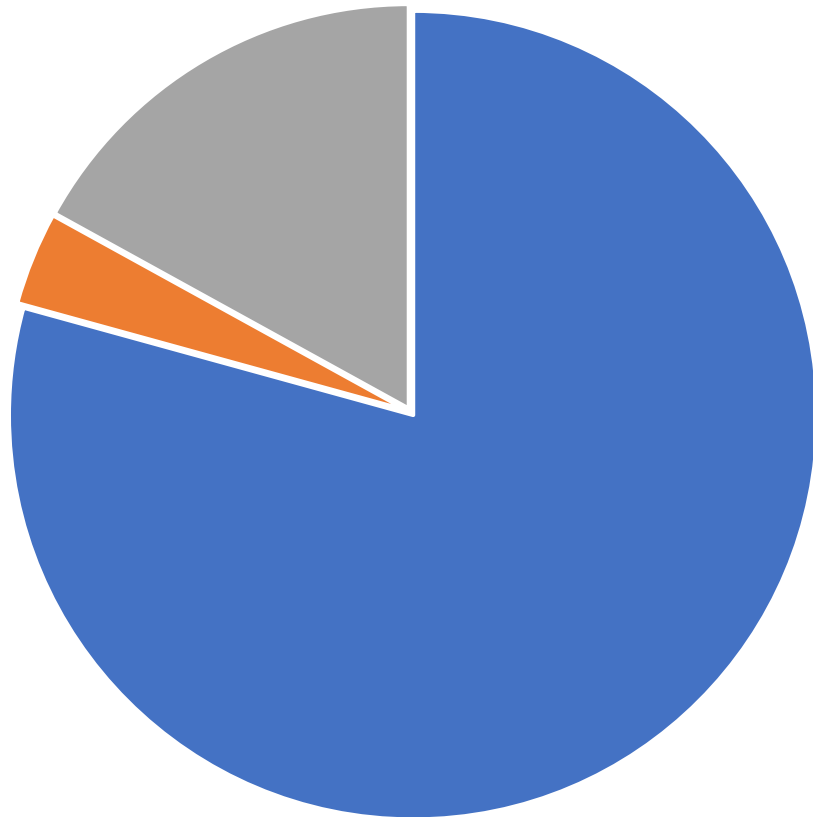


**Georgia Dept
of Early Care
and Learning**

BRIGHT FROM THE START

SHARE Applications

Eligible Applications



- Licensed Childcare Centers
- Exempt Programs
- Family Daycare Homes

	Applications	Eligible	Not Eligible
Licensed Child Care Centers	1,307	1,274	33
Exempt Programs	97	60	37
Family Child Care Learning Homes	353	273	80
Total	1,757	1,607	150



Training, Technical Assistance, and Quality Supports



To support the quality improvement of Georgia's school-age child care, the Georgia Statewide Afterschool Network is offering a variety of training and technical assistance to grant recipients based on a four-tier model.



Training, Technical Assistance, and Quality Supports

➤ Tier 1: Required Training for Grant Recipients

All grant recipients were required to attend a two-hour training on Best Practices in School Age Care and Development.

➤ Tier 2: Optional Virtual Training

Open to all Grant Recipients – Following grant notifications, GSAN will offer series of five webinars.



Training, Technical Assistance, and Quality Supports

➤ Tier 3: Small Group Virtual Coaching

Open to the Subset of Grant Recipients – GSAN will offer small group coaching opportunities for up to **100 grant recipients** to dive deeper into understanding school age best practices and assessing and improving their current program quality.

➤ Tier 4: School Age Quality Assessments

Within the Tier 3: Small Group Coaching, coaches will work with programs to identify those that are interested in, ready for, and would benefit from an external quality assessment. Based on these readiness assessments, GSAN would provide external school age quality assessments to up to **25 grant recipients**.



1. Raising the Bar: An Introduction to the Georgia Afterschool & Youth Development Quality Standards
2. Building Positive Relationships
3. Addressing Trauma and Building Resilience in Youth
4. Delivering Great School Age Activities
5. Inspiring School Age Environments

Tier 2
Webinar series
offered
throughout
August 2021



Welcome to the Board of Early Care
and Learning

Public Comment

August 26, 2021



**Georgia Dept
of Early Care
and Learning**

BRIGHT FROM THE START

AFY2022 and FY2023 – Budget Request

Department of Early Care and Learning	Current FY22 Budget	Proposed AFY22 Budget	Proposed FY23 Budget
BY PROGRAM			
Child Care Services	\$324,018,848	\$324,018,848	\$324,018,848
Pre-K + (HS)	\$382,734,866	\$382,734,866	\$382,734,866
Quality Initiatives	\$57,827,234	\$57,827,234	\$57,827,234
Nutrition	\$148,000,000	\$148,000,000	\$148,000,000
Total	\$912,580,948	\$912,580,948	\$912,580,948

BY FUNDING SOURCE			
State General	\$57,726,235	\$57,726,235	\$57,726,235
State Lottery	\$382,559,866	\$382,559,866	\$382,559,866
Federal	\$471,959,847	\$471,959,847	\$471,959,847
Other	\$335,000	\$335,000	\$335,000
Total	\$912,580,948	\$912,580,948	\$912,580,948

Finance Update AFY 2022 and FY2023 Budget Request



Proposed Board Meeting Dates **2022**

- February 17, 2022
- May 19, 2022
- August 25, 2022
- November 17, 2022



Board Meeting Dates **2021**

- ~~February 18, 2021~~
- ~~May 20, 2021~~
- ~~August 26, 2021~~
- November 18, 2021

