



# Welcome to the Board of Early Care and Learning

May 12, 2016



Bright from the Start: Georgia Department of Early Care and Learning

[www.dec.al.ga.gov](http://www.dec.al.ga.gov)

# Approval of Agenda and Minutes

- Approve **5-12-16** agenda
- Approve **2-18-16** minutes



# Inspiration



Bright from the Start: Georgia Department of Early Care and Learning

[www.decal.ga.gov](http://www.decal.ga.gov)



# Board Member Updates

Board members report on their recent DECAL-related activities in their districts.





# Commissioner's Update

Amy M. Jacobs  
Commissioner



Bright from the Start: Georgia Department of Early Care and Learning

[www.dec.al.ga.gov](http://www.dec.al.ga.gov)

# DECAL Strategic Plan

- Developing plan for FY16-FY20
- Due to Office of Planning and Budget: June 30, 2016
- Just concluded two working sessions
- Developed goals, objectives, strategies to support vision
- Based on simplified vision
  - Every child in Georgia will have access to quality early care and education regardless of family income or location.
- Four goals

# DECAL Strategic Plan *(continued)*

- Centered around themes:
  - school readiness
  - access to high quality
  - supporting the workforce internal and external
  - program alignment and coordination internal and external
- Next steps: engage and solicit feedback from board, DECAL staff and stakeholders through webinars

# Annual Satisfaction Surveys

## • DECAL Employee

- Designed by DECAL and GSU; distributed by GSU by e-mail on May 2
- DECAL Executive Cabinet will see quantitative findings
- Only Commissioner will see qualitative findings (comments)
- Final reports will be available to all staff/public

## • Customer

- Last year focused on Child Care Licensing
- This year focusing on Family Child Care Learning Homes
- Distributed by e-mail or U.S. Postal Service (as requested by provider)



# Interacting with Stakeholders

DECAL's underlying principle:

*When people don't know what's going on, it's human nature for them to imagine a version that's ten times worse than the truth.*

Ken Blanchard  
Business Consultant and Management Expert

# Interacting with Stakeholders *(continued)*

- Georgia Child Care Association Conference, March 2016
- Professional Family Child Care Alliance of Georgia Conference, April 2016
- Annual Head Start Conference, May 2016
  
- Current messages:
  - Effects of CCDF Reauthorization
  - CCDF State Plan
  - Changes to CAPS
  - Emphasis on Quality Rated

# Questions & Comments from Board





# Finance, Administration, and Legislative Update

Ray Higgins

Deputy Commissioner for Finance and Administration



Bright from the Start: Georgia Department of Early Care and Learning

[www.dec.al.ga.gov](http://www.dec.al.ga.gov)

# Finance Update

## FY 2016 Summary

Data as of March 31st	Budget	Expenditures*	Remaining Balance	% Remaining
<b>BY PROGRAMS</b>				
Child Care Services	\$258,637,214	\$175,452,222	\$83,184,992	<b>32%</b>
Pre-K + (HS)	\$321,470,348	\$243,848,836	\$77,621,512	<b>24%</b>
Quality Initiatives	\$37,512,775	\$28,546,071	\$8,966,704	<b>24%</b>
Nutrition	\$138,000,000	\$106,017,308	\$31,982,692	<b>23%</b>
<b>Total Expenses</b>	<b>\$755,620,337</b>	<b>\$553,864,437</b>	<b>\$201,755,900</b>	<b>27%</b>

<b>BY FUNDING SOURCE</b>				
State General	\$55,527,513	\$31,642,137	\$23,885,376	<b>43%</b>
State Lottery	\$321,295,348	\$243,707,002	\$77,588,346	<b>24%</b>
Federal	\$378,637,476	\$278,418,969	\$100,218,507	<b>26%</b>
Other	\$160,000	\$96,330	\$63,670	<b>40%</b>
<b>Total Funds</b>	<b>\$755,620,337</b>	<b>\$553,864,437</b>	<b>\$201,755,900</b>	<b>27%</b>

\* Includes encumbrances.

# Legislative Update



**Bright from the Start: Georgia Department of Early Care and Learning**

[www.dec.state.ga.us](http://www.dec.state.ga.us)

# SFY 2017 Budget Highlights

- \$36.4 million in lottery funds for Georgia's Pre-K
  - \$14.7 million in lottery funds for new Pre-K supplemental pay model
  - \$11.5 million in lottery funds for increased compensation for Assistant Teachers, 4-yr Degree Lead Teachers & Master's Degree Lead Teachers
  - \$7.8 million in lottery funds for a 3% increase for all Lead and Assistant Pre-K Teachers
  - \$2.4 million in lottery funds to increase funds for benefits and operations in Pre-K classrooms

# Childcare and Parent Services (CAPS) Update

- Approximate number of children served
- Potential funding restrictions
- Eligibility staff transition





# Audits and Compliance Update

Rian Ringsrud  
Director of Audits and Compliance



Bright from the Start: Georgia Department of Early Care and Learning

[www.decal.ga.gov](http://www.decal.ga.gov)

# Why does DECAL have auditors?

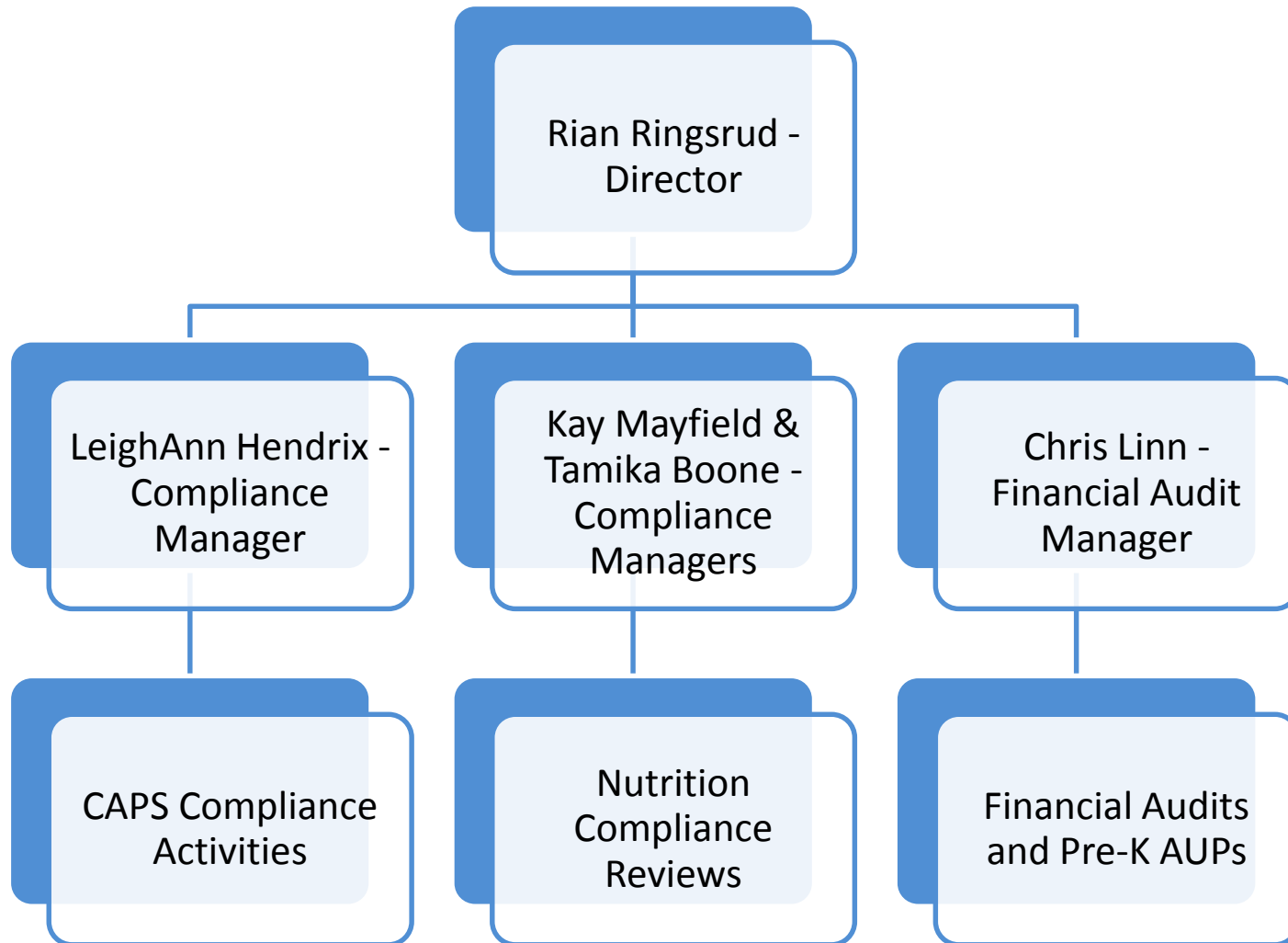
- Over \$665 million in federal, state and lottery funds annually passes through DECAL to vendors and sub recipients
- Federal regulations require DECAL to ensure the integrity of the programs we operate with federal funding by monitoring the sub recipients of those funds

# Audits and Compliance Division Overview

- Created in 2013
- Goal was to consolidate, streamline, and enhance the various audit, financial review, and compliance activities across the agency and to promote and ensure stewardship of agency funds
- Currently composed of 29 positions



# Audits and Compliance Division Organization



# Audits and Compliance Activity Data

- 29 positions conducted 721 audits, compliance reviews, and investigations and validated 927 reconciliations identifying approximately \$3.6 million in improper payments in FY 2015
  - CAPS Provider Investigations – 99 provider investigations; \$2.1 million in improper payments
  - Nutrition Compliance Reviews – 578 compliance reviews; \$497,000 in improper payments and 345,000 reclaimed meals
  - Pre-K Agreed Upon Procedure Reviews – 42 AUP reviews; \$284,000 in improper payments
  - Pre-K Reconciliations – 927 reconciliations validated; \$301,000 in improper payments
  - Comprehensive Financial Audits – 2 audits; \$400K in budget reductions

# Impact of Improper Payments

- If \$3.6 million were put back into our programs:
  - Over 900,000 meals in CACFP or SFSP
  - Over 36,000 weeks of child care through CAPS
  - Over 900 Pre-K slots (41 classrooms)
- Recipients of funding who knowingly and willfully receive funds to which they are not entitled may face sanctions:
  - 91 referrals to law enforcement
  - 27 indictments
  - 25 guilty pleas



# Nutrition Services Update

Shani Drake  
Program Marketing and Outreach Manager

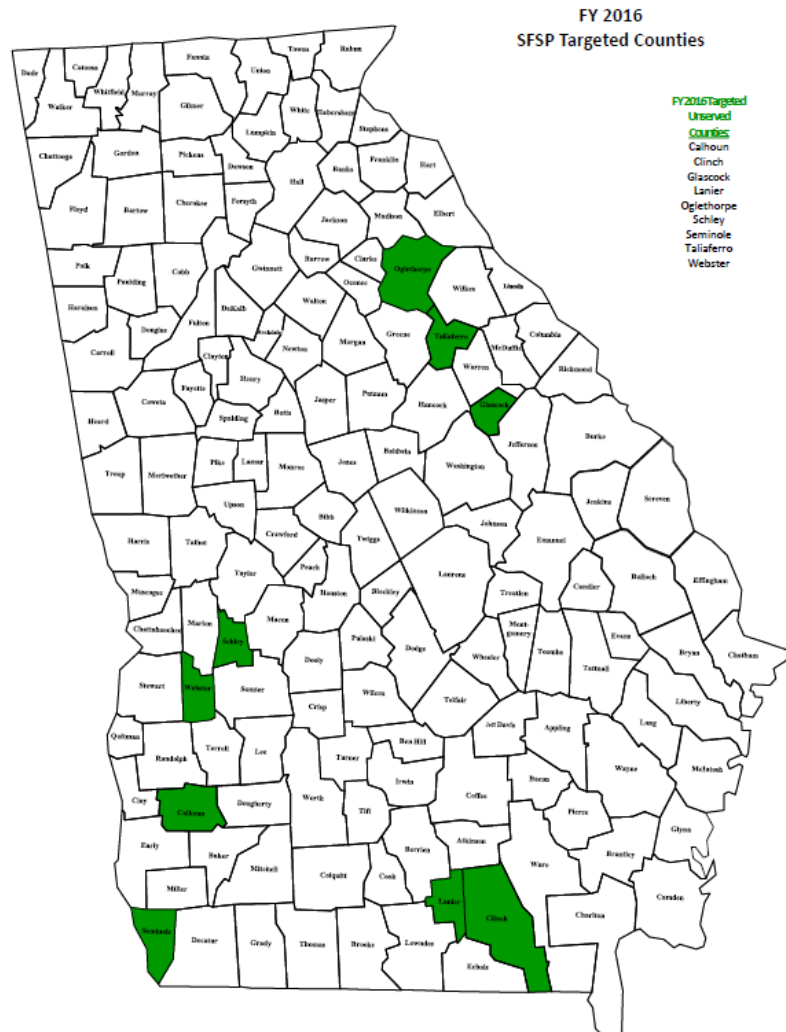


# Summer Food Service Program (SFSP) Updates

- Projecting a 10% increase in sponsors for 2016
  - 107 sponsors in 2015
  - 117 sponsors have attended training, started applications, or submitted applications
- SFSP participants using GA ATLAS
- Building new partnerships to promote and expand access to the program
- Drafted/sent joint letter with with GADoE to targeted counties



# Summer Food Service Program (SFSP) Targeted Counties



<b>Calhoun</b>	<b>Lanier</b>	<b>Seminole</b>
<b>Clinch</b>	<b>Oglethorpe</b>	<b>Taliaferro</b>
<b>Glascock</b>	<b>Schley</b>	<b>Webster</b>

# Summer Food Service Program (SFSP)

## Upcoming Events

- Summer Meals Kickoffs
  - Wednesday – June 8 (Floyd County)
  - Thursday – June 16 (Metro Atlanta)
  - Wednesday – June 22 (Macon)
- DECAL SFSP Kickoff highlighting City of Atlanta’s mobile meals delivery system – Wednesday, June 29

# How to Find Summer Meals

- Visit the *Summer Food Rocks* site locator online at:  
<http://www.fns.usda.gov/summerfoodrocks>.
- Call 1 (866) 3-HUNGRY
- Call 1 (855) 550-SFSP
- Text FOODGA to 877-877



# Child Care Services Update

Kristie Lewis  
Assistant Commissioner for Child Care Services



Bright from the Start: Georgia Department of Early Care and Learning

[www.decal.ga.gov](http://www.decal.ga.gov)

# Exemptions History

- Stakeholder workgroup studied exemptions in 2010 and 2011.
- Exemption rules were revised in November 2011 with added requirements:
  - Valid e-mail address
  - Signed letter by parent
  - Notice posted that program is exempt
  - Notice posted if program has no liability insurance
  - Attendance records
  - Ability to rescind when operating outside the approval

# Exemptions History *(continued)*

- Request by DECAL board in 2012 to examine exemptions further:
  - Exemption Call Project
    - Phase I: Contact all programs – completed
    - Phase II: Research and data entry – completed
    - Phase III: Communication and re-application – in process
- Summer 2013 and 2014 blitz visits to exempt programs with subsidy:
  - Data collection and analysis
  - Positive results

# Exemption Visit Project (EVP) – Summer 2016

- Goal 1 – Determine if exempt programs, regardless of subsidy receipt, are operating as approved by Child Care Services:
  - Parent signatures
  - Posted notices
  - Local ordinances compliance
  - Program operations (days of week and hours, etc.)
  - Administrator/Director available
- Goal 2 – Collect data on certain health and safety aspects as required by CCDF reauthorization:
  - Supervision
  - Criminal records checks
  - First Aid and CPR
  - Indoor Safety
  - Outdoor Safety
  - Ratio
  - Training

# Anticipated Answers or Results of EVP

- Are programs operating as approved by DECAL?
- Are programs informing parents they are exempt?
- Do programs carry or inform parents of liability insurance coverage?
- Are programs offering safe indoor and outdoor environments?
- Are children appropriately supervised?
- Do staff receive background checks and training?
- Do ratios align with licensing rules?
- Does DECAL need to revisit exemption rules?



# Licensing Rule Changes

- **Enforcement and Compliance Rules**
  - Statewide community forums
  - Training to individual provider groups
  - Visits
  - Public hearing and board vote today
  - Implementation date: July 1, 2016
- **Emergency Preparedness Rules**
  - Required by CCDF reauthorization
  - Anticipated public hearing and board vote (8/2016)



# Communications Update

Reg Griffin  
Chief Communication Officer

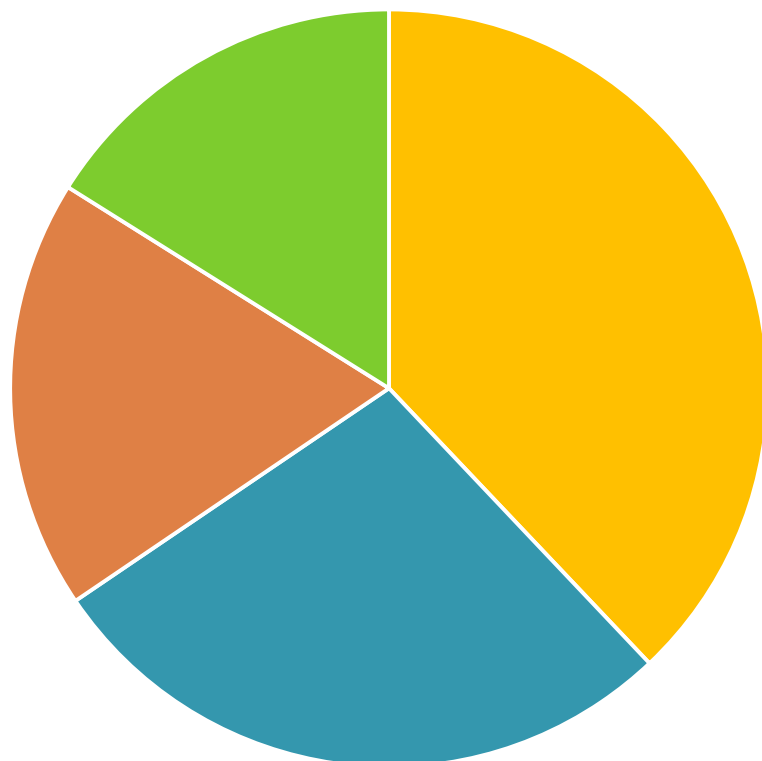


Bright from the Start: Georgia Department of Early Care and Learning

[www.decal.ga.gov](http://www.decal.ga.gov)

# Media Coverage

January - April, 2016



■ Pre-K ■ CCS ■ QualityRated ■ Grants

**Total Stories: 51**

**Top Stories:**

Georgia's Pre-K Program – 33%

CCS Investigations – 24%

Quality Rated – 16%

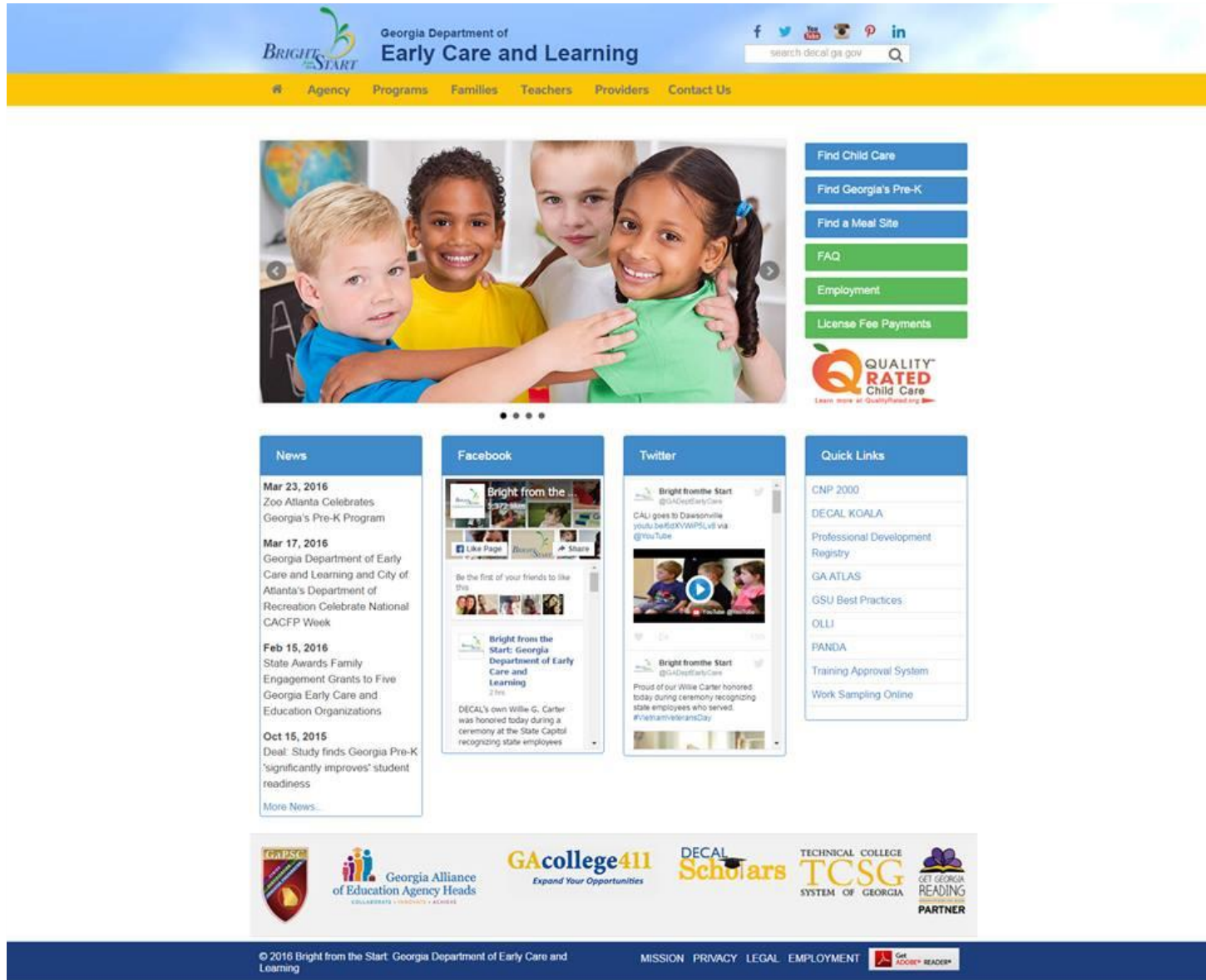
Grants – 14%

**ALSO:**

Read Across Georgia

Education Reform Commission

# New Look for Website



The screenshot shows the new website layout for Bright from the Start. At the top, there is a blue header with the logo on the left, the text "Georgia Department of Early Care and Learning" in the center, and social media icons (Facebook, Twitter, YouTube, Instagram, Pinterest, LinkedIn) and a search bar on the right. Below the header is a yellow navigation bar with links for Agency, Programs, Families, Teachers, Providers, and Contact Us.

The main content area features a large image of four diverse young children smiling. To the right of the image is a vertical menu of blue and green buttons: Find Child Care, Find Georgia's Pre-K, Find a Meal Site, FAQ, Employment, and License Fee Payments. Below this menu is the "QUALITY RATED Child Care" logo with the tagline "Learn more at QualityRating.com".

Below the main image are four columns of content:

- News:** A list of recent news items with dates and titles, such as "Mar 23, 2016 Zoo Atlanta Celebrates Georgia's Pre-K Program" and "Feb 15, 2016 State Awards Family Engagement Grants to Five Georgia Early Care and Education Organizations".
- Facebook:** A preview of the organization's Facebook page, showing a post about a ceremony and a video player.
- Twitter:** A preview of the organization's Twitter feed, showing tweets about a video and a ceremony.
- Quick Links:** A list of quick links including "CNP 2000", "DECAL KGALA", "Professional Development Registry", "GA ATLAS", "GSU Best Practices", "OLLI", "PANDA", "Training Approval System", and "Work Sampling Online".

At the bottom of the page, there is a footer with logos for Georgia PSC, Georgia Alliance of Education Agency Heads, GAcollege411, DECAL Scholars, TECHNICAL COLLEGE SYSTEM OF GEORGIA, and GET GEORGIA READING PARTNER. The footer also contains copyright information, a mission statement, and links for MISSION, PRIVACY, LEGAL, and EMPLOYMENT, along with a "Get READY READER" logo.

# Social Media Outreach

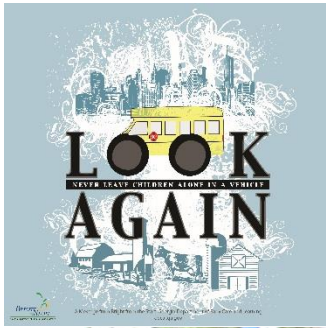
Facebook	5,578
Twitter	1,756
Instagram	307
Pinterest	194
LinkedIn	143
YouTube	97

***Total Social Media Reach of 8,114***

# Welcome CALi



March 2 – House and Senate Resolutions for Georgia’s Pre-K Week  
March 3 – Read Across Georgia Kickoff  
March 8 – Children’s Day at the Capitol  
March 28 – Visit to White Oak Learning Academy, Dawsonville  
April 19 – Look Again Video with Governor, First Lady, Commissioner  
May 4 – Cake with CALi SERW Event  
May 31 – Look Again Kickoff at Capitol



Tuesday, May 31, 2016, 10 a.m.  
State Capitol, North Wing



***BREAK***  
*(15 minutes)*





# System Reform Update

Kristin Bernhard  
Deputy Commissioner for System Reform



Bright from the Start: Georgia Department of Early Care and Learning

[www.dec.al.ga.gov](http://www.dec.al.ga.gov)

# Quality Rated PSA



# Advertising Concepts



Quality Rated Child Care is a tool that rates Georgia programs to help you make the choice that's right for you and your child—without the mystery. Visit [QualityRated.org](http://QualityRated.org)



Quality Rated Child Care is a tool that rates Georgia programs to help you make the choice that's right for you and your child—without the mystery. [QualityRated.org](http://QualityRated.org)



Quality Rated Child Care is a tool that rates Georgia programs to help you make the choice that's right for you and your child—without the mystery. [QualityRated.org](http://QualityRated.org)

*Quality Rated takes the mystery out of searching for child care.*

Bright from the Start: Georgia Department of Early Care and Learning

[www.dec.al.ga.gov](http://www.dec.al.ga.gov)

# Access to Quality Rated Programs *(as of 4/28/16)*

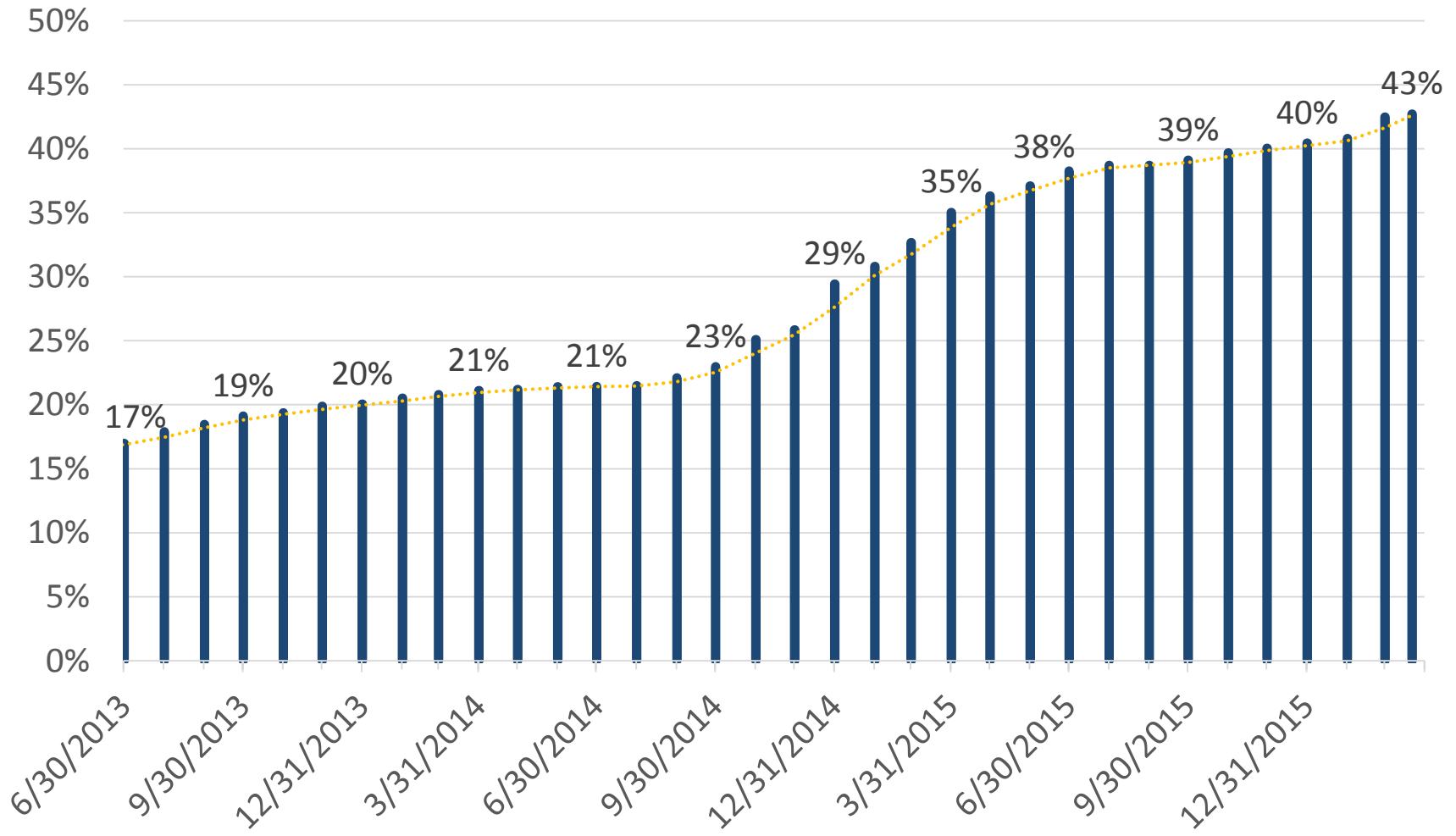
## Participation by Facility Type

	Count	Percentage
Child Care Learning Center	1,778	56.53%
Family Child Care Learning Home	745	38.78%
Other	79	8.15%
<b>Total</b>	<b>2,602</b>	<b>43.12%</b>

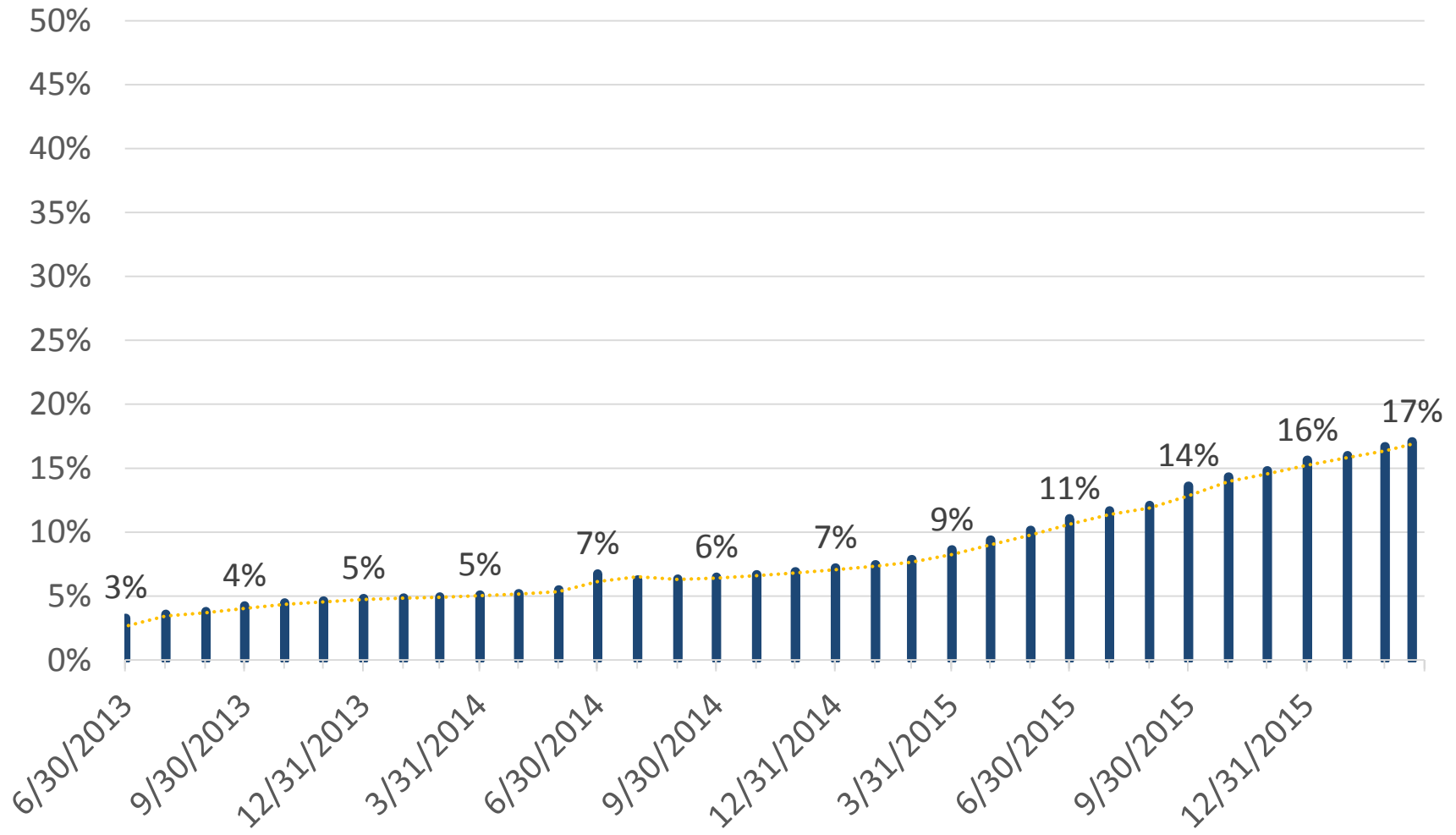
## Ratings by Facility Type

	One Star	Two Star	Three Star	Total
Child Care Learning Center	251	320	99	670
Family Child Care Learning Home	81	121	72	274
Other	19	24	8	51
<b>Total</b>	<b>351</b>	<b>465</b>	<b>179</b>	<b>995</b>

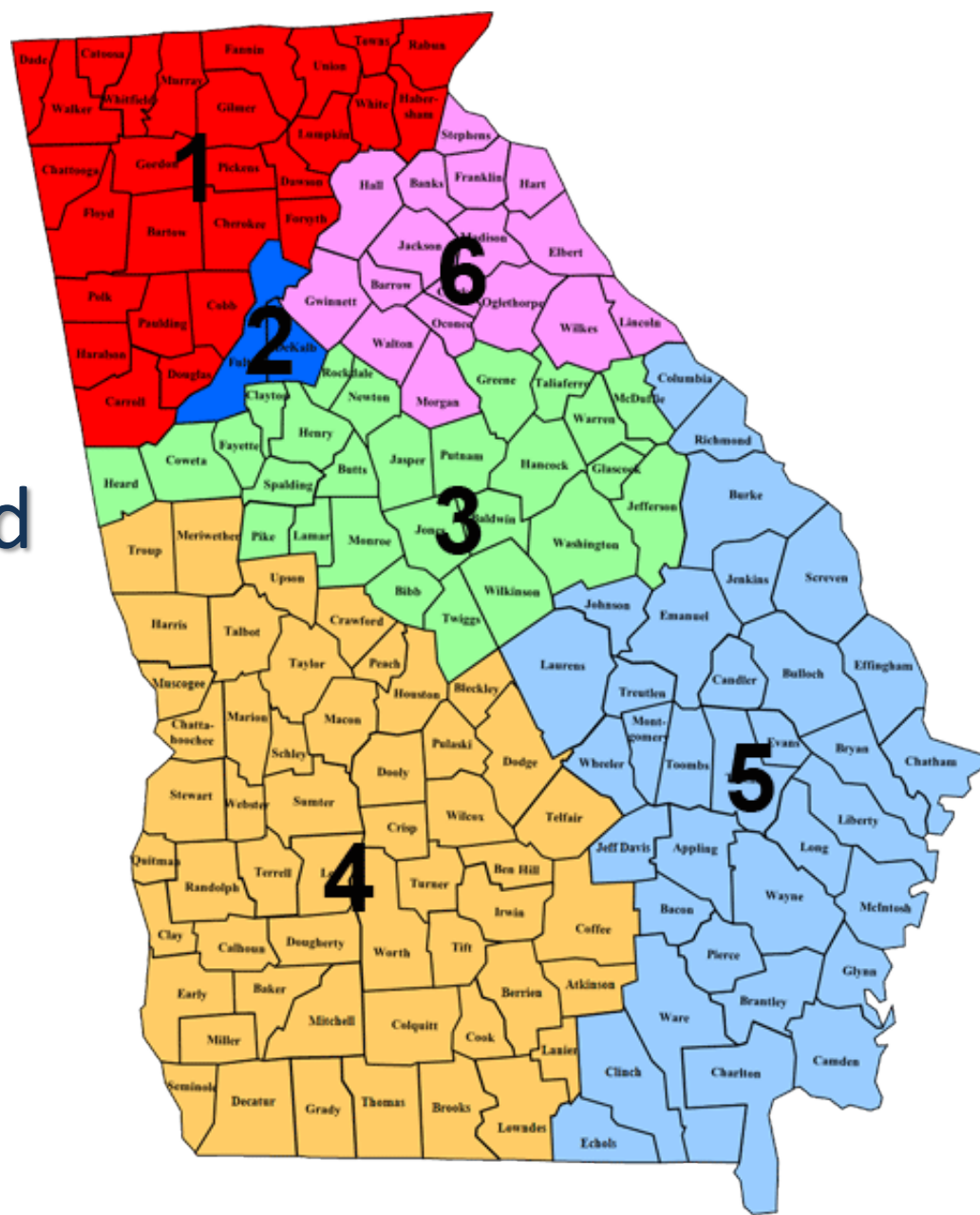
# Quality Rated: % Participating



# Quality Rated: % Rated



# Child Care Resource and Referral (CCR&R) Regions

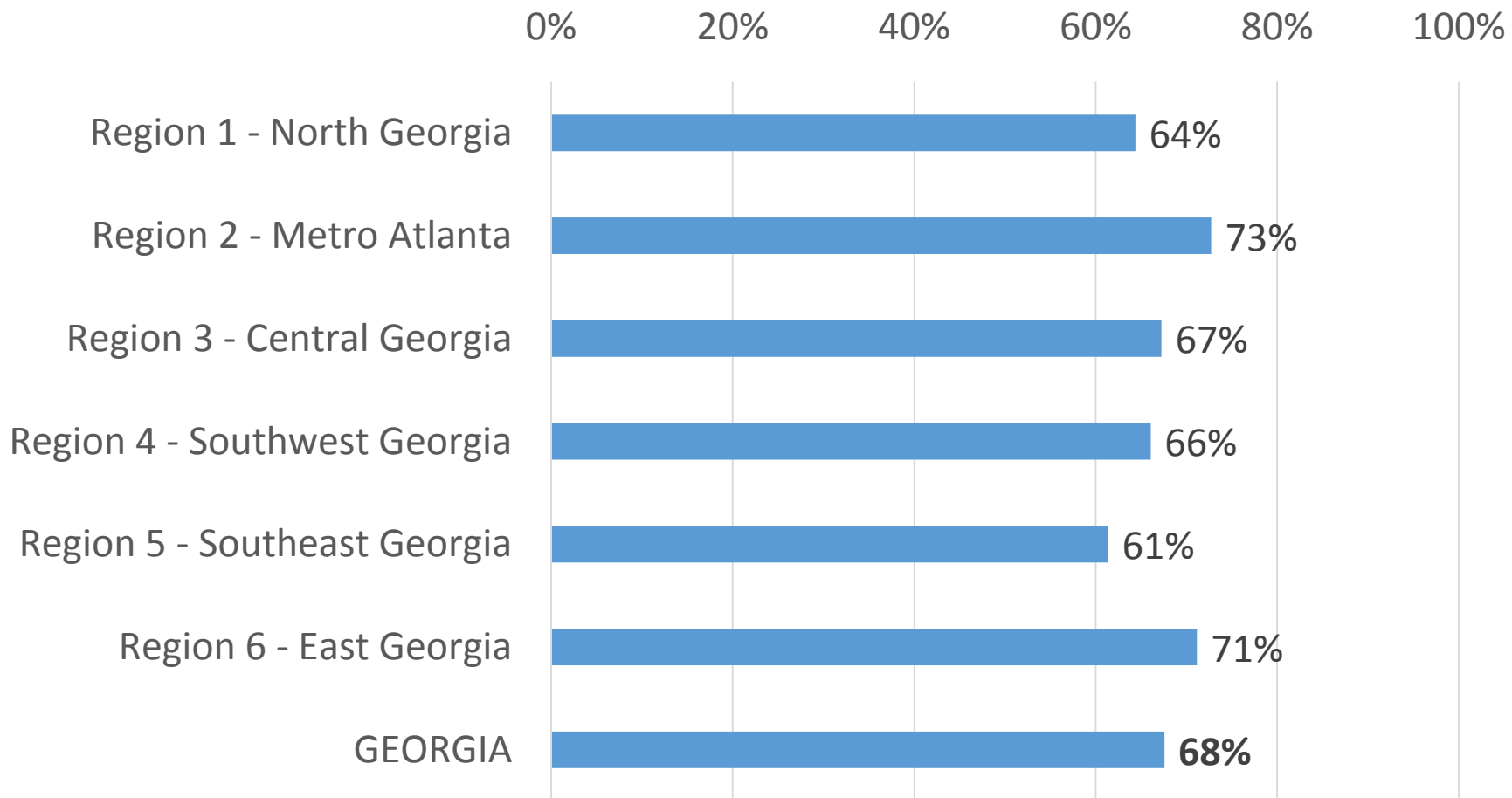


# Licensed Capacity in Quality Rated

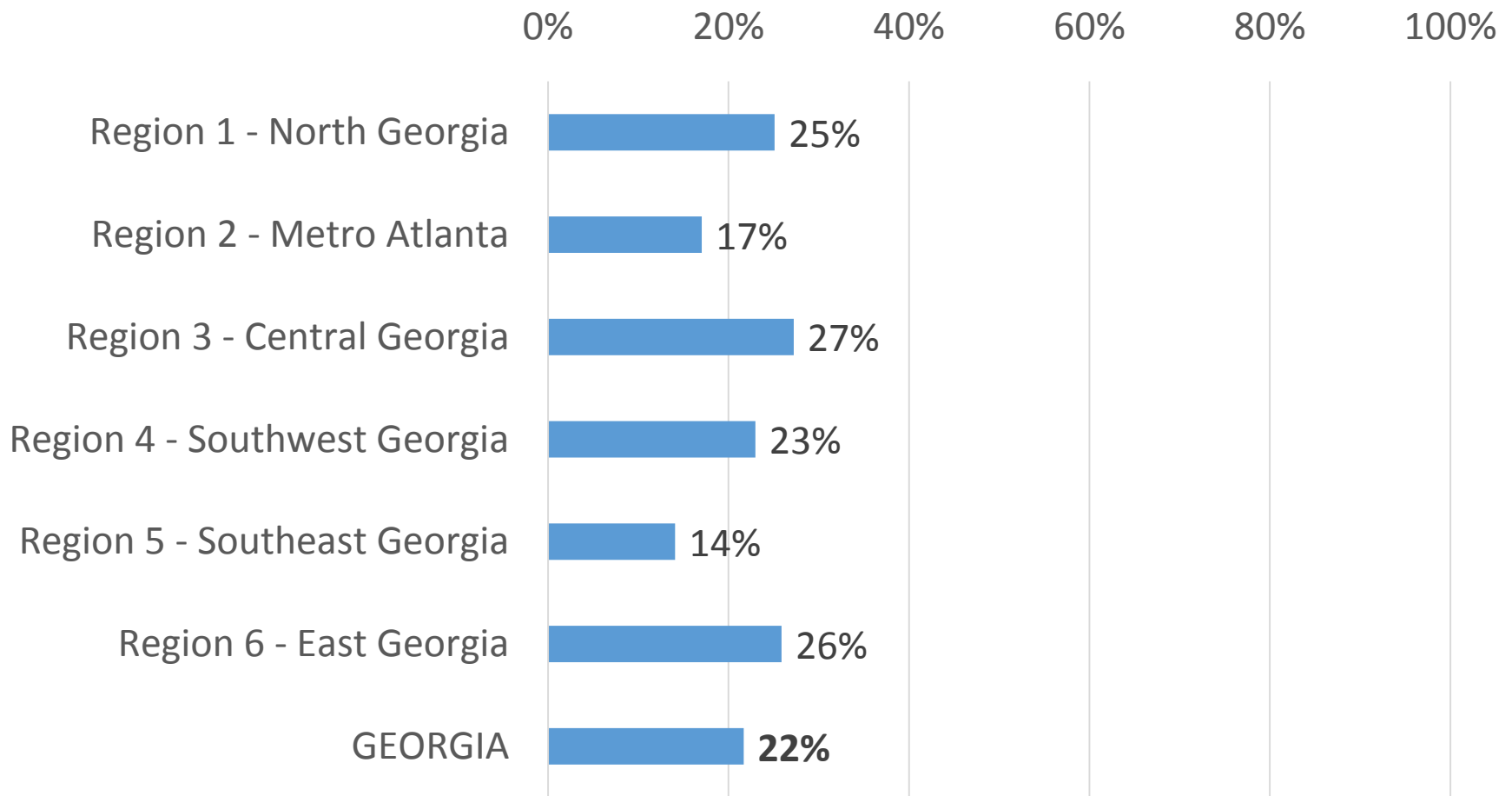
CCR&R Region	Total Licensed Capacity	Total Rated (1-3 Stars)	% Total Rated (1-3 Stars)
1	78,622	18,466	23%
2	83,673	12,851	15%
3	51,546	14,625	28%
4	45,472	13,189	29%
5	47,611	10,000	21%
6	55,785	15,650	28%
<b>Total</b>	<b>362,709</b>	<b>84,781</b>	<b>23%</b>



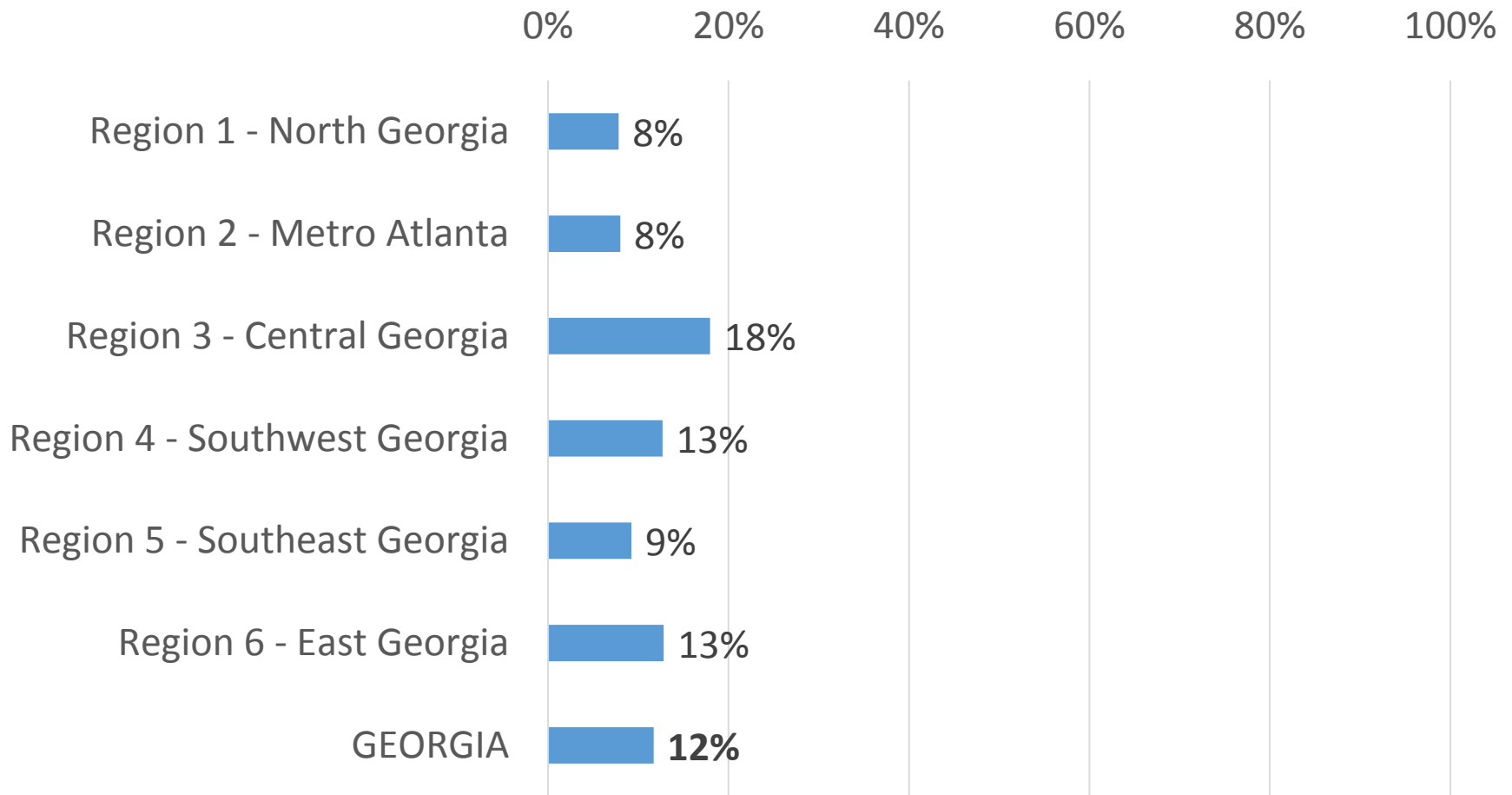
# Percent of CAPS Certificates in QR Participating Programs



# Percent of CAPS Certificates in Rated Programs (1-3 Stars)



# Percent of CAPS Certificates in 2 or 3 Star Programs



# Quality Rated Subsidy Grants

- Funded by Race to the Top Early Learning Challenge
- Competitive, year-long grants that pay 90<sup>th</sup> percentile of the 2013 market rate to serve CAPS eligible families.
- Programs must:
  - Maintain 2- or 3-Star Quality Rated status for duration of grant agreement
  - Currently serve at least ten infants/toddlers with active CAPS certificates if two-star rated
  - Be willing to serve at least ten CAPS eligible infants/toddlers if three star-rated
  - Be willing to check eligibility at the program level
  - Have licensed capacity to serve requested slots
  - No more than 50% of total class enrollment in grant funded slots
- Parents do not pay family fees; receive access to high quality child care; and case management handled by the child care provider.
- First round of grants awarded summer 2015; second round awarded fall 2015.
- Currently, grants are funding 36 child care programs to provide 516 child care spaces.



# Experience of a Subsidy Grant Recipient

Wande Okunoren-Meadows  
Little Ones Learning Center





# Georgia's Pre-K Program & Instructional Supports Update

Susan Adams

Assistant Commissioner for Pre-K & Instructional Supports



Bright from the Start: Georgia Department of Early Care and Learning

[www.dec.state.ga.us](http://www.dec.state.ga.us)

# Georgia's Pre-K Program: 2016-2017 School Year Application

- Application dates
  - Released - March 28
  - Deadline - April 22
- Pre-K consultants review applications
  - May 16 - May 25
- Programs notified of funding decisions
  - June 15

# Summer Transition Program

- Targeted, six-week school readiness programs for income eligible children:
  - *Rising Kindergarten Program*
    - Focuses on children who did not attend Georgia's Pre-K or attended Georgia's Pre-K or Head Start but need additional support who will attend Kindergarten in the fall
  - *Rising Pre-K Program*
    - Focuses on children whose home language is Spanish and who are enrolled to attend Pre-K in the fall
- The goal of both programs is to support children's transitions and development, particularly their early literacy skills, before entering kindergarten or pre-kindergarten.



# Rising K Summer Transition Program

## ● Applications

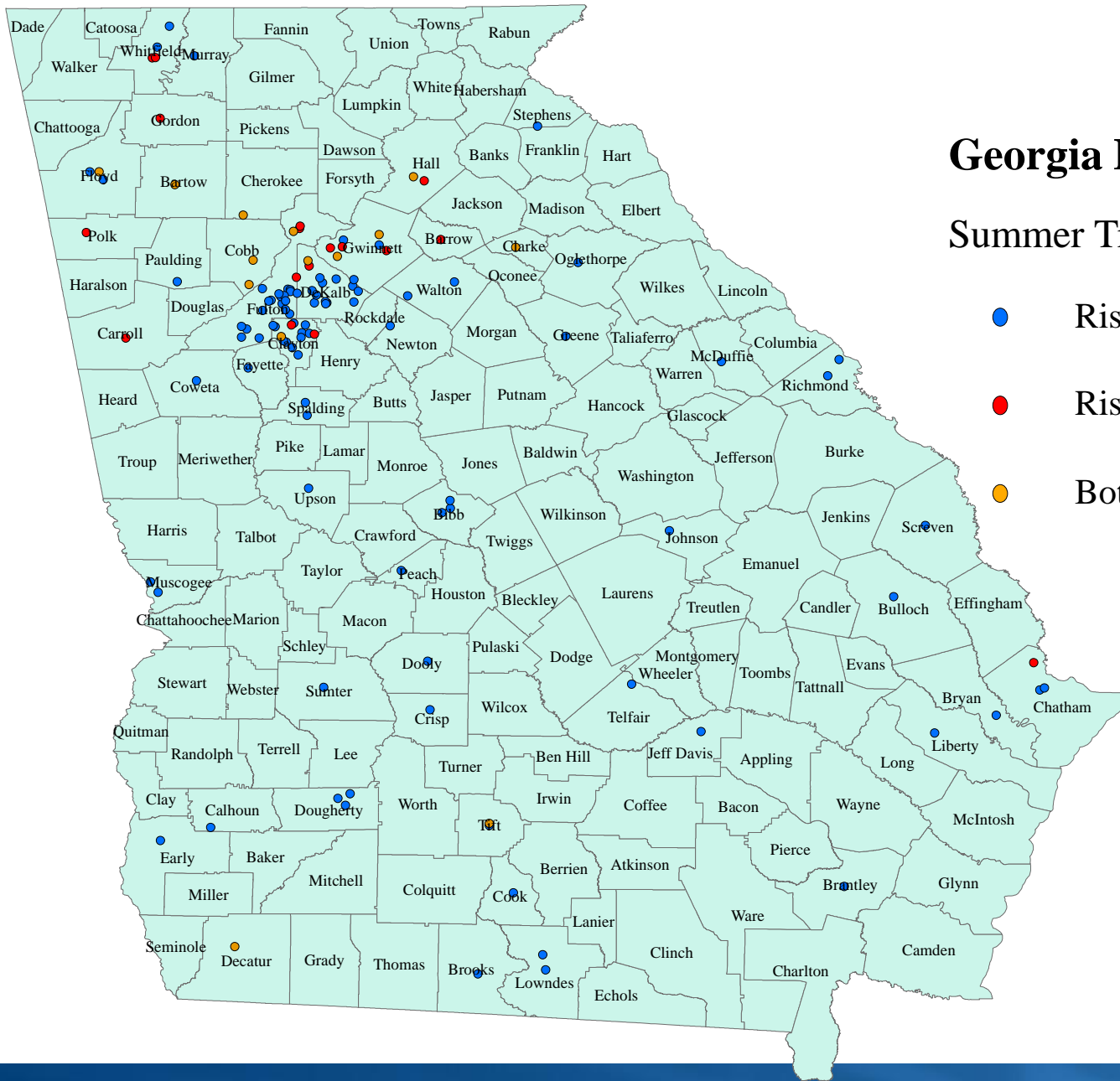
- New applications: 87
  - School system: 12
  - Private providers: 75
- Continuation applications: 52
  - School system: 15
  - Private providers: 37

## ● Awards

- 128 total classes funded in 47 counties
  - School System: 44 classes
  - Private providers: 84 classes
- Continuation classes: 86
- New classes: 42

# Rising Pre-K Summer Transition Program

- No application process for Rising Pre-K
  - Invitation to participate is extended to targeted, eligible programs
- 42 total classes funded in 17 counties
  - School system: 26 classes
  - Private provider: 16 classes



# Georgia Pre-K Site Locations

## Summer Transition Program

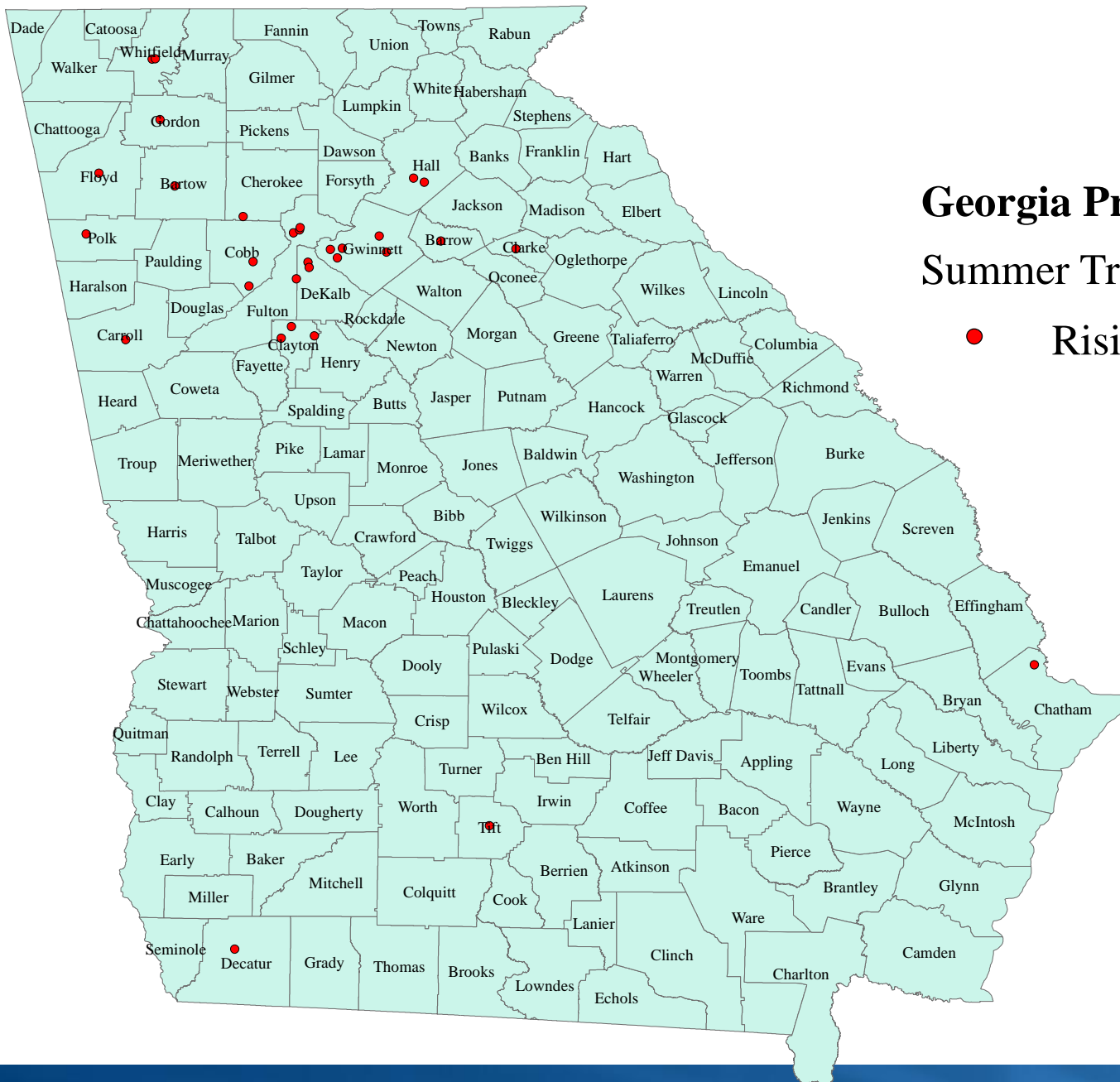
- Rising Kindergarten only (94)
- Rising Pre-K only (17)
- Both (14)

# Georgia Pre-K Site Locations

## Summer Transition Program

Rising Kindergarten Provider (108)





# Georgia Pre-K Site Locations

## Summer Transition Program

● Rising Pre-K Provider (31)

# Pre-K Teacher of the Year Competition

## ● Applications

- Individual teachers submitted applications
- Applications reviewed and scored by outside readers:
  - 51 applications received (25 from school systems; 26 from private providers)

## ● Finalists

- Selected using application scoring rubric
- 6 finalists chosen; 3 representing each program type
- Finalists announced by May 31, 2016
- Will participate in additional competition activities including interview and classroom observation

# Pre-K Teacher of the Year Competition *(continued)*

- **Winners**
  - One winner for each program type; public/ private
  - Announced in Fall 2016
  - Prizes include individual cash awards and classroom supplies and materials
- Pre-K Teacher of the Year will represent the program throughout the 2017 school year.

# Family Engagement Community Grants

- DECAL offered a grant opportunity to all Family Connection Collaboratives across the state.
- Grant proposals outlined activities designed to:
  - Increase the capacity of families to support their children's growth and fully participate in school and community
  - Increase the diversity of families in the community with access to family engagement opportunities
- Focus on families with complex needs
- Linked to Strengthening Families Protective Factors



# Family Engagement Community Grants Funding

- Funding through Georgia's Early Learning Challenge Grant
  - Total grant funding available: \$240,000
  - Individual grant awards: \$ 10,000 maximum
- Competitive process
- Four grants awarded to E3Z counties

# Family Engagement Community Grants Awarded Proposals

- Winning proposals included activities designed to:
  - Increase family access to resources
  - Support family access to community events
  - Provide family education on a variety of topics
- Awards:
  - Total grants: 21 communities
  - Total funding awarded: \$210,000
- Second round of funding will begin June 2016.

- The new online system will include the following existing systems:
  - Professional Development Registry (PDR)
  - Training Registration Systems
  - Trainer and Training Approval System
- Existing systems will be updated and enhanced as part of the development process.
- Phase I Launch: June 27, 2016

## Purpose of the New System:

- Update and connect existing systems into one access point for registry members, teachers, directors, and trainers
- Streamline professional development policies across the agency, approved entities, and trainers
- Collect more valid, timely workforce data
- Allow easy access to state approved trainings
- Provide users with a seamless way to track/access completed trainings, credentials, or degrees

- Phase I: Launches June 27, 2016
  - Includes all DECAL created trainings (e.g., trainings conducted by R&Rs and Best Practices on DECAL's behalf)
- Phase II: Timeline will be determined after Phase I launch
  - Will include all trainings offered for DECAL credit, including those delivered by independent trainers
  - One seamless portal for all approved trainings statewide

- Communication plan:
  - Customized emails to all interested audiences (i.e., teachers, directors, trainers)
  - Print materials for distribution at conferences and community meetings
  - Informational webinars
    - For internal DECAL staff to understand how GaPDS benefits them and to provide training on the system
    - For external stakeholders to understand the benefits of GaPDS and to answer questions



Georgia Professional Development System for Early Childhood Educators

## ● DEMO

# Georgia's Pre-K Professional Development Evaluation: Part Two





# Background: Race to the Top Study

- Evaluated the impact of two professional development models – *Making the Most of Classroom Interactions* and *My Teaching Partner*.
- Lead teachers ( $n = 486$ ) were randomly selected to participate and randomly assigned to one of the professional development models or a control group. Various data collection efforts.
- Because of this rigorous design the researchers were confident that any differences between the groups at the end of the study were caused by the professional development activities and that the findings reflect the type of change that could be anticipated among Georgia's Pre-K teachers if these models were broadly implemented.

# Summary of Findings

	<b>MMCI vs. control</b>	<b>MTP vs. control</b>	<b>MMCI vs. MTP</b>
<b>Emotional Support</b>	MMCI > control	MTP > control	No difference
<b>Classroom Organization</b>	No difference	No difference	No difference
<b>Instructional Support</b>	MMCI > control	No difference	No difference

All effect sizes were small, ranging from .22 for the effect of MTP on Emotional Support to .36 for the effect of MMCI on Emotional Support.

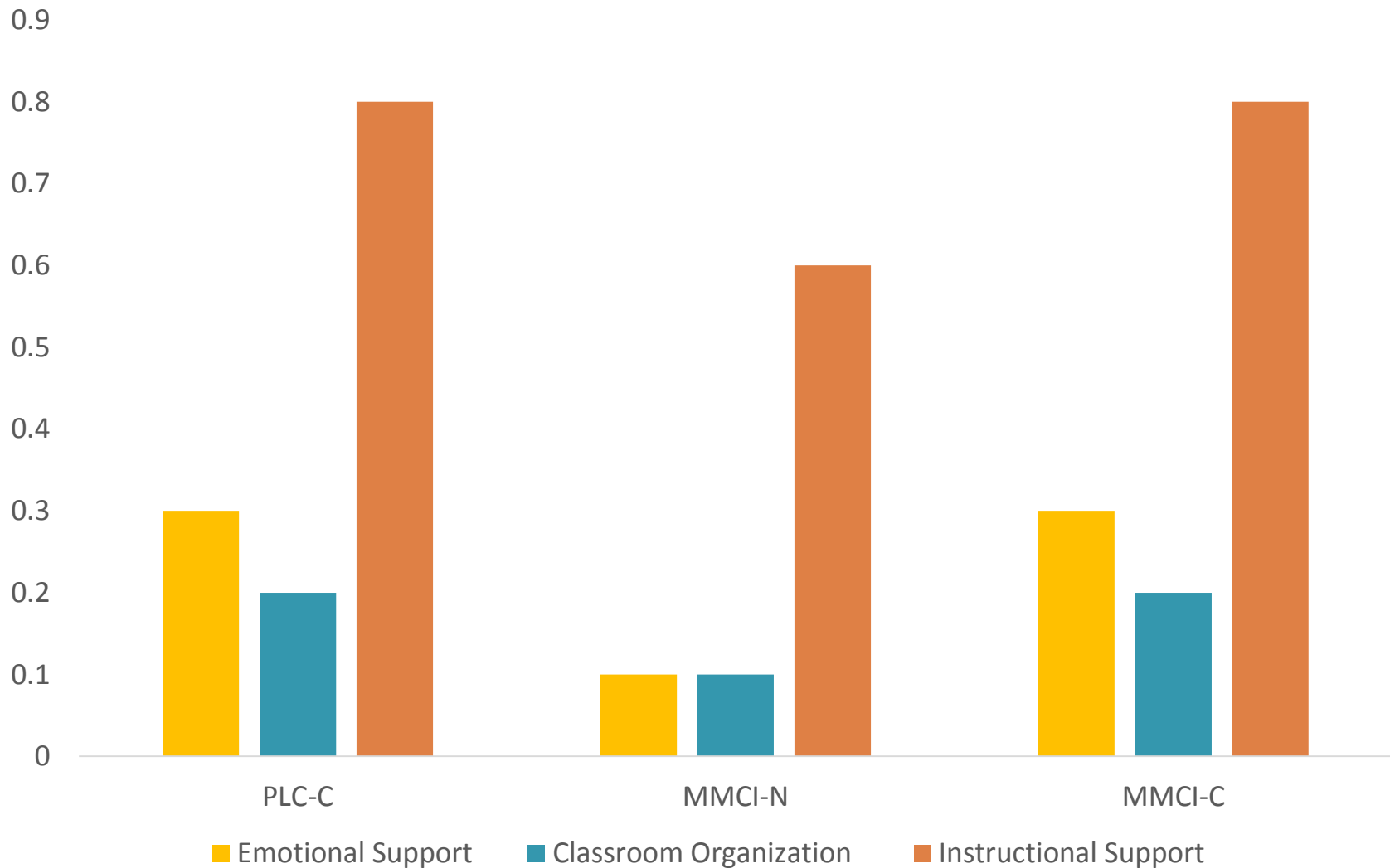
# Developing “Scalable” Models

- Based on results from the previous study, Georgia’s Pre-K and Teachstone collaborated on developing three revised (but new) models.
- The models were specifically designed to focus on and improve **instructional support**. Implementation began in the Summer Transition Program in 2014.
- As part of the implementation, a study was designed to assess the effectiveness of the three newly designed models.
- Study was a partnership between FPG Child Development Institute at UNC – Chapel Hill and Georgia’s Pre-K Program.

# Three Models of Professional Development

- Professional Learning Communities with Coaching (PLC-C) **Analysis N=28 at 10 sites**
- Making the Most of Classroom Interactions – No Coaching (MMCI-NC) **Analysis N=28 at 22 sites**
- Making the Most of Classroom Interactions – Coaching (MMCI-C) **Analysis N=15 at 10 sites**
- A control group from a previous study was added **N=160**

# Pre/Post Test Differences by Training Model



# Conclusions

- Significant gains were found in Instructional Support scores for teachers in all three models.
- Gains were seen for some groups in Emotional Support and Classroom Organization, but on average the gains were larger for Instructional Support than the other domains.
- Findings must be interpreted with caution because the sample was selected based on site director interest and convenience; we cannot know if these findings would generalize to other teachers.



# Board Self-Assessment Findings

Dr. Bentley Ponder  
Director of Research and Policy Analysis



Bright from the Start: Georgia Department of Early Care and Learning

[www.dec.al.ga.gov](http://www.dec.al.ga.gov)

# Board Self-Assessment Results 2016

## Average

The Board has clear, realistic goals.

4.73

Board members understand the organization's mission and its programs.

4.82

Board members clearly understand the roles and responsibilities of this Board.

4.55

The Board has clear organizational structure (officers, committees, assigned staff).

4.55

All necessary skills, stakeholders and diversity are represented on the Board.

4.36



# Board Self-Assessment Results 2016

## Average

The Board effectively represents Bright from the Start as a goodwill ambassador to the state-at-large.

4.82

Each committee of the Board functions effectively.

4.36

The Board has a good working relationship with the Commissioner of Bright from the Start.

4.55

The Board engages in strategic planning and bases its actions on the results.

4.27

The Board regularly monitors and evaluates progress toward the strategic goals.

4.18

## Board Self-Assessment Results 2016

## Average

The Board receives regular reports on finances/budgets, program performance, and other important matters.

4.73

Information communicated to the Board is clear, timely, and effective.

4.45

Each member of the Board is involved and demonstrates interest in the Board's work.

4.45

# Lunch

*(Pick up in Entry Area)*

## Committee Meetings

*Programs – Hickory*

*Budget/Finance – Willow*

*System Reform – Cypress*

(The public is welcome to attend/observe committee meetings but may not participate in the committee's discussion.)

# Committee Reports

- Budget/Finance – Carlene Talton
- Programs – Jerri Kropp
- System Reform – Susan Harper

# Welcome to the Board of Early Care and Learning

# Public Hearing

May 12, 2016

# Board Action on:

## ***Rules and Regulations for Family Child Care Learning Homes, Rule Chapter 290-2-3***

Proposed Amendment of Rule 290-2-3-.03

Proposed Amendment of Rule 290-2-3-.07

Proposed Amendment of Rule 290-2-3-.15

Proposed Repeal of Rule 290-2-3-.18

# Board Action on:

## ***Rules and Regulations for Child Care Learning Centers, Rule Chapter 591-1-1***

Proposed Amendment of Rule 591-1-1-.02

Proposed Amendment of Rule 591-1-1-.31

Proposed Amendment of Rule 591-1-1-.38

Proposed Repeal of Rule 591-1-1-.41

Proposed Repeal of Rule 591-1-1-.42

Proposed Repeal of Rule 591-1-1-.43

Proposed Repeal of Rule 591-1-1-.44

# Remaining Board Meeting Dates 2016

August 18, 2016

November 10, 2016

(Will propose meeting dates for 2017 at  
August board meeting.)