



Welcome to the Board of Early Care and Learning

August 20, 2015



Bright from the Start: Georgia Department of Early Care and Learning

www.dec.state.ga.us

Approval of Agenda and Minutes

- Approve **8-20-15** agenda
- Approve **5-14-15** minutes



Inspiration

Dr. Luann Purcell



A Story of Another Sally...

SALLY
DICK AND JANE



Sally! Sally!
Come here, Sally.
Come here.





**Remember...it MUST always be
about the children!**



Board Member Updates

Board members report on their recent DECAL-related activities in their districts.





Commissioner's Update

Amy M. Jacobs
Commissioner



Bright from the Start: Georgia Department of Early Care and Learning

www.dec.state.ga.us

What is CCDF?

- Child Care and Development Fund
- \$5.3 billion block grant program that provides funding to states, territories, and tribes to provide access to child care services for low-income families and to improve the quality of child care.
- Georgia receives approximately \$189M annually.



What is CCDF Reauthorization?

Child Care and Development Block Grant (CCDBG) Act of 2014:

- Reauthorizes CCDF through FY 2020
- Focuses on balancing dual purposes
 - To promote economic self-sufficiency for low-income families
 - To support healthy development and school readiness needs of children

Significant Advancements of Reauthorization

- Makes child care **safer**
 - defining health and safety requirements for child care providers
 - requiring background checks and inspection of facilities
- Provides **more stability** for parents and children through family-friendly eligibility policies
- Improves the **quality** of child care
- Helps parents better understand child care choices by making information about providers
 - **more accessible**
 - **more transparent**



Implementation and Effective Dates

- Kristie Lewis and Ira Sudman = CCDF Co-administrators for Georgia
- CCDF State Plan due March 1, 2016 for FY 2016-2018 (three-year plan)
- Actions required:
 - Internal DECAL planning
 - Board updates
 - On-going technical assistance from ACF/OCC
 - External stakeholder dialogue
 - Governor's Office and other state departments
 - Providers
 - Partners
 - Citizens (Public Hearings)
 - Other

Employee and Customer Service Survey

- Developed by DECAL and Georgia State University (primarily DECAL)
- Conducted and analyzed by Georgia State University
- Employee Survey
 - Full-time employees
 - Conducted March 2015 (Georgia State University)
 - n = 247 or 82% of 303 DECAL employees
- Customer Service Survey
 - Focused on CCS – Sent to all licensed providers
 - Conducted May 2015
 - N=960 (20% Response Rate)

Employee Survey: Results

Top Five Responses (Mean, % SA and A)	N	Mean	% Agree & Strongly Agree
I am proud of our achievements as an organization.	245	4.2	88
I expect to be employed by the agency 12 months from now.	241	4.2	85
My direct supervisor supports my need to balance work and family issues.	246	4.2	84
My direct supervisor is accessible.	246	4.2	83
My direct supervisor keeps me updated about important matters and changes.	246	4.2	83

Employee Survey: Results

Items below 70% (% SA or A, Mean)	N	Mean	% Agree & Strongly Agree
Overall, the Commissioner and Deputy Commissioners are easy to talk to.	205	3.8	69
Any stress associated with my job is manageable.	245	3.7	66
Change and innovation are encouraged at DECAL.	243	3.7	65
Overall, the Commissioner and Deputy Commissioners are accessible.	211	3.7	65
I feel that I am sufficiently recognized for my work.	245	3.6	57
All work units (<i>e.g., CCS, Quality, Pre-K, System Reform, Federal Programs, IT, Audits, Legal, Nutrition, Research</i>) work together to ensure that DECAL functions like one department.	243	3.3	40

Employee Survey Conclusions

- The results of the employee survey are good.
 - 71% of the respondents rated employee satisfaction a 4 or a 5, up from 65% last year.
- More than half of the respondents agreed or strongly agreed with all but one of the 23 items used to measure workplace quality.
 - The exception, as it was the last two years, is “All work units work together to ensure that DECAL functions like one department.”

Customer Service Survey: Profile of Respondents

By Department	N	%
CCLC	571	60%
Family	351	37%
Group	38	4%

	N	%
Pre-K Grantee	283	49.5%

	N	%
Quality Rated	535	65%

	N	%
Compliant (Yes)	839	87%
Compliant (Unknown)	39	4%

Customer Service Survey: Results

	% Agree & Strongly Agree	Mean
Overall, Child Care Services supports my program in meeting health and safety regulations.	87	4.1
Child Care Services staff are courteous and polite.	82	4.1
It is easy for me to obtain information from Child Care Services.	72	3.8
Overall, Child Care Services does not operate with a “gotcha” mentality.	71	3.8
Child Care Services applies rules and regulations in a fair and unbiased manner.	68	3.8

Customer Service Survey: Results

	% Agree & Strongly Agree	Mean
Core Rules have been fully explained to me by my Licensing Consultant.	80	4.0
I understand the difference between core rules and non-core rules.	81	4.0
I understand the way that core rules determine my compliance designation.	83	4.0
I believe the current rules and regulations reflect appropriate health and safety practices in child care.	82	4.0

Customer Service Survey Conclusions

- CCS is highly rated on most aspects of customers' experiences.
- At least 75% of all respondents rated CCS a 4 or 5 on 84% of the items.
- Areas of improvement include accessing information and DECAL's role as regulator. The latter relates to customers' perceptions of consistency and fairness.

Economic Impact Study

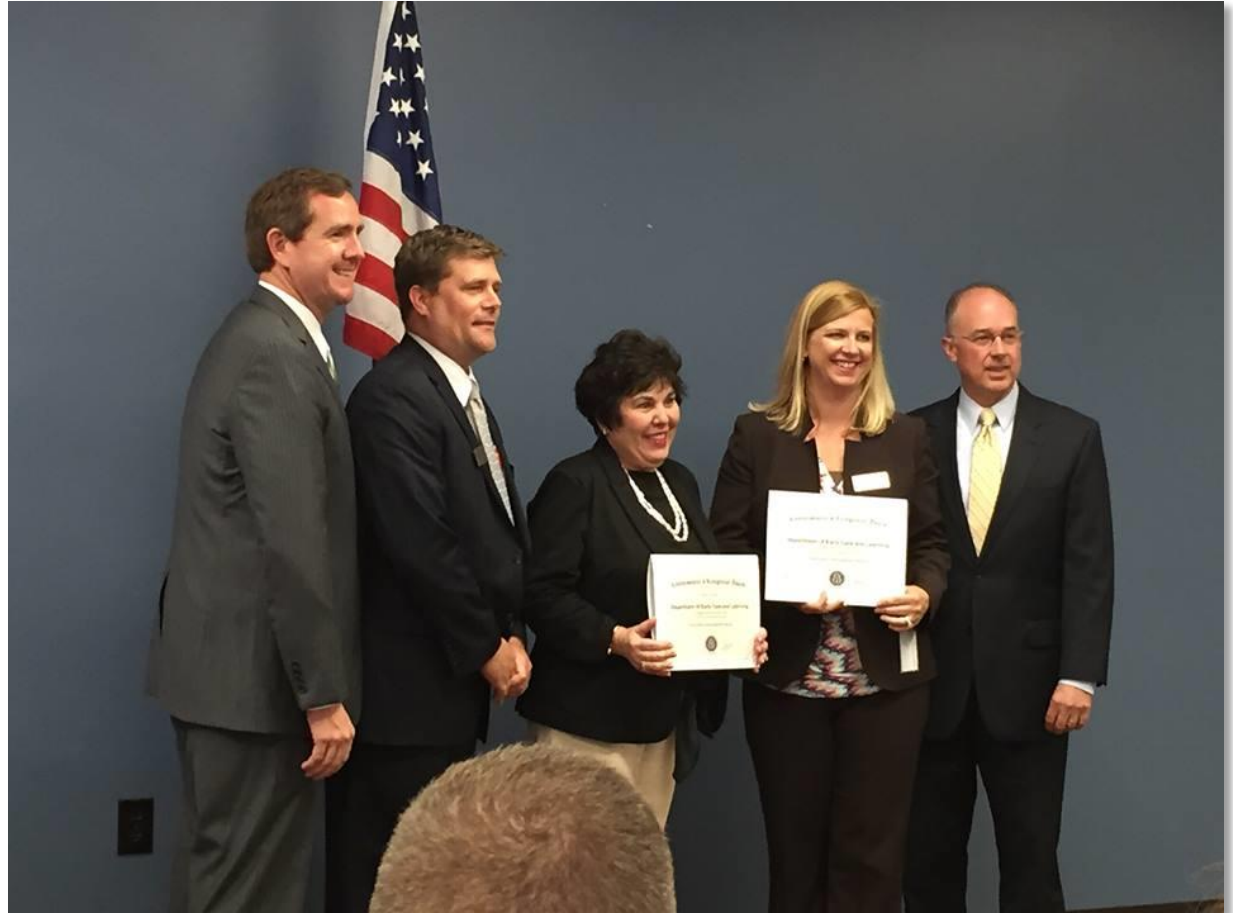
- Measures the economic impact of Georgia's child care industry using an established estimated model
- Follow-up to 2008 study:
 - Study conducted by partnership between UGA and GSU
- Provides critical workforce data
- Results published in September/October 2015

Economic Impact Study Road Shows

- Five policy forums planned:
 - Valdosta: September 29
 - Macon: October 14
 - Atlanta: October 21
 - Athens: October 23
 - Dalton: TBD
- Purpose: to share facts of economic impact with local government and business leaders, child care providers, advocacy and civic organizations; etc.
- Board members invited and encouraged to attend

Special Recognition: Human Resources

In May, the Georgia Department of Administrative Services recognized DECAL for best practices in Human Resources classification and performance management.



Questions & Comments from Board





Finance, Legislative, and CAPS Update

Ray Higgins

Deputy Commissioner for Finance and Administration



Bright from the Start: Georgia Department of Early Care and Learning

www.decal.ga.gov

Finance Update

FY 2015 Summary

Data as of June 30th	Budget	Expenditures*	Remaining Balance	% Remaining
BY PROGRAMS				
Child Care Services	\$245,250,159	\$245,250,158	\$1	0%
Pre-K + (HS)	\$314,457,567	\$312,211,532	\$2,246,035	1%
Quality Initiatives	\$24,137,014	\$24,137,013	\$1	0%
Nutrition	\$131,927,685	\$131,927,685	\$0	0%
Total Expenses	\$715,772,425	\$713,526,388	\$2,246,037	0%

BY FUNDING SOURCE				
State General	\$55,493,488	\$55,493,488	\$0	0%
State Lottery	\$314,300,032	\$312,053,998	\$2,246,034	1%
Federal	\$345,903,052	\$345,903,049	\$3	0%
Other	\$75,853	\$75,853	\$0	0%
Total Funds	\$715,772,425	\$713,526,388	\$2,246,037	0%

* Includes encumbrances.

Finance Committee – Budget Request

Department of Early Care and Learning	Current FY16 Budget**	Proposed AFY16 Budget	Proposed FY17 Budget
BY PROGRAMS			
Child Care Services	\$258,637,214	\$258,637,214	\$258,637,214
Pre-K + (HS)	\$321,470,348	\$321,470,348	\$321,470,348
Quality Initiatives	\$37,512,775	\$37,512,775	\$37,512,775
Nutrition	\$138,000,000	\$138,000,000	\$138,000,000
Total Expenses	\$755,620,337	\$755,620,337	\$755,620,337

BY FUNDING SOURCE			
State General	\$55,527,513	\$55,527,513	\$55,527,513
State Lottery	\$321,295,348	\$321,295,348	\$321,295,348
Federal	\$378,637,476	\$378,637,476	\$378,637,476
Other	\$160,000	\$160,000	\$160,000
Total Funds	\$755,620,337	\$755,620,337	\$755,620,337

**FY16 budget as of Amendment 2

Legislative Update



Bright from the Start: Georgia Department of Early Care and Learning

www.dec.state.ga.us

CAPS Performance Audit Follow Up Report

- Original performance audit released in March 2013
- Results of the follow up report
 - “DECAL has taken steps to address all of the findings.”
 - “DECAL has begun to establish internal controls to manage the program more efficiently and effectively.”
 - Three findings fully addressed; six partially addressed
- Significant action cited in follow up report
 - DECAL created an Audits and Compliance Division
 - 25 indictments of CAPS participants and providers
 - New legislation to improve child safety by requiring a national fingerprint based background check



Child Care Services Update

Elisabetta Kasfir
Director, CCS Program Operations



Bright from the Start: Georgia Department of Early Care and Learning

www.decal.ga.gov

Login

User Name

Password

Log In

[Forgot Login Information?](#)

Create New Account

Welcome!

Bright from the Start is continuing its commitment to provide excellent customer service, increase communication and simplify administrative processes. DECAL KOALA is an online resource that is available to all licensed and registered child care programs. When you register for DECAL KOALA, you can sign in online to view and update specific information about your program(s), enter additional email addresses, pay license fees, print your license and more.

If you have questions, comments or need support, send an email to decalkoala@dec.al.ga.gov

Project Update

- ✔ Completed Phases 1 and 2 - update provider information and make online payments
- ✔ Trained Child Care Services staff to assist providers
- ✔ Activated 1600 accounts
- ✔ Working on Phase 3 - online records check applications

Provider Self Service

- [Home](#)
- [Change Password](#)
- [Update Facility Information](#)
- [Pay License Fee](#)
- [View Inspection Reports](#)
- [View Enforcement Actions](#)
- [View/Print License Certificate](#)
- [Resources](#)
- Future Phases:**
- [Records Check](#)
- [Amendment Requests](#)
- [Accident/Incident Reporting](#)

Child Learning Academy

CCLC-30183

Go to **Update Facility Information** page to change fields marked with an *.

[Print](#)

Facility Address		Mailing Address*	
4195 Main Street Atlanta GA - 30349		4195 Main Street Atlanta, GA - 30349	
County: Fulton			
Director/Admin Name*		Website*	Facility Phone*
Jayne Doe		test.com	(404) 555-1212
			Facility Fax*
			(404) 555-1212



DECAL Contact Information

Title	Name	Email	Phone
Assigned Consultant	Earlene Huston	marcy.maioli@decals.ga.gov	(770) 357-7066
Lead Consultant	Coty Johnson	anne.wearing@decals.ga.gov	(770) 357-4919
Regional Director	Marsha Ruiz-Crosby	marcy.maioli@decals.ga.gov	(404) 463-0655

Owner Information: A-Kid's Solution Early Learning and Development Academy, LLC

Owner Contact Name	Owner Email	Owner Phone
Bobby Cox	test@decals.ga.gov	(770) 778-5884

Email Address(es) On File

Primary Email*	Secondary Email(s)*
test@decals.ga.gov	test@test.com test@bellsouth.net

Additional Information

Accreditation(s)	Pre-K Slots Available	Licensed Capacity
	0	164
Services Provided	Months of Operation	Ages Served
<input checked="" type="checkbox"/> Accepts Child Care Subsidies* <input checked="" type="checkbox"/> CACFP* <input checked="" type="checkbox"/> School-age Summer Care <input type="checkbox"/> SFSP*	<input checked="" type="checkbox"/> JAN <input checked="" type="checkbox"/> MAY <input checked="" type="checkbox"/> SEP <input checked="" type="checkbox"/> FEB <input checked="" type="checkbox"/> JUN <input checked="" type="checkbox"/> OCT	<input checked="" type="checkbox"/> Infant (0-12 months) <input checked="" type="checkbox"/> Toddler (1-2 years)

Status of Rule Updates

- Child Care Learning Center (CCLC) and Group Day Care Home (GDCH) rule books have been merged.
 - Rules that differ have been revised to differentiate by capacity.
- “Family Day Care Homes” revised to “Family Child Care Learning Homes”
- New rule book for establishing *Support Centers*
- Key revisions for some criminal records check rules

Status of Rule Updates *(continued)*

- Rule writing sessions held May – July 2015
- Currently conducting “Rules Roundtables” with key CCS/Legal staff
- Stakeholder and community meetings to be held in the fall
- Public Hearing to be held at November 2015 board meeting

Child Care Services - FY16 Statistics

FY Ending	June 30, 2013	June 30, 2014	June 30, 2015
Compliant	88%	90%	94%
Not Compliant	7%	10%	6%
Not Determined	5%	<1%	<1%



Nutrition Services Update

Falita Flowers
Director of Nutrition Services



Bright from the Start: Georgia Department of Early Care and Learning

www.decal.ga.gov

SFSP Outreach and Expansion Activities

- SFSP 2015 Proclamation
- Kickoff Events
 - Athens Housing Authority
 - Clayton County Public Schools
- Strengthening Partnerships
 - Georgia Public Libraries and Governor's Grade Level Reading Campaign
 - Georgia Food Bank Association
 - USDA Rural Development and HUD
 - Georgia Department of Education
 - SE Dairy Association



FY 2015 SFSP Participation Update

- Total meals served: 4.9 million
 - Total facilities/sites: 1,733
 - Average sites serving meals each day: 1,643
 - Total counties served: 100
 - Five new counties
 - Atkinson
 - Baker
 - Columbia
 - Oconee
 - Pike



Successful Collaborative Partnerships

- 42 libraries
- 13 HUD properties
- \$320,000 in grant funds
 - Expand meal service in targeted counties
 - Create mobile meal strategies



FY 2016 Child Nutrition Program Reauthorization

- Recommended changes include:
 - New CACFP meal pattern requirements
 - Decrease in area eligibility threshold
 - Increase sponsor fee with day care homes
 - Expand meal benefits
 - Additional funds for outreach and expansion initiatives



FY 2016 Initiatives and Activities

- Increase awareness and promotion
 - SFSP Summit
 - National CACFP Week
- Increase access and participation
 - After school programs
 - Adult facilities
 - SFSP meal sites
- Improve sponsor experience and performance
 - System conversion (GA ATLAS)
 - Policy implementation-Child Nutrition Program reauthorization



BREAK
(15 minutes)



Head Start Update

Janice Haker
Head Start State Collaboration Director



Bright from the Start: Georgia Department of Early Care and Learning

www.dec.al.ga.gov

Head Start Collaboration Projects

- Annual Needs Assessment/Strategic Plan
- Disability MOU
- Homelessness MOU and Conference
- Foster Children
- Attendance (Georgia Reads)
- American Academy Pediatrics and DPH
- Home Visiting (Great Start Georgia)
- PDR
- Quality Rated
- Early Head Start/Child Care Partnerships
- Water Safety

EHS/Child Care Partnership Grants

● Atlanta	Easter Seals of North Georgia	\$900,000
● Atlanta	DECAL	\$3,500,000
● Augusta	CSRA, EOA	\$900,000
● Cartersville	Tallatoona CAP	\$1,500,000
● Columbus	Enrichment Services Program	\$1,300,000
● Dalton	Family Resource Agency	\$1,400,000
● Forest Park	Clayton County CSA	\$1,100,000
● Fort Valley	Fort Valley State University	\$5,600,000
		TOTAL \$16,200,000



Georgia's Pre-K Program & Instructional Support Update

Susan Adams
Assistant Commissioner for Pre-K &
Instructional Support



Bright from the Start: Georgia Department of Early Care and Learning

www.dec.state.ga.us

Summer Transition Program

- Targeted six-week school readiness programs for income eligible children:
 - *Rising Kindergarten Program*
 - Focused on children who will attend Kindergarten in the fall but did not attend Georgia's Pre-K or attended Georgia's Pre-K or Head Start but need additional support
 - *Rising Pre-K Program*
 - Focused on children whose home language is Spanish and who are enrolled to attend Pre-K in the fall
- Overall goal of programs = to support children's transitions and development, particularly early literacy skills, before entering prekindergarten or kindergarten

Summer Transition Program

● *Rising Kindergarten*

- Offered in 80 classrooms in 33 counties
- Served over 1,200 children
- 16 children per classroom

● *Rising Pre-K*

- Offered in 30 classrooms in 13 counties
- Served approximately 420 children
- 14 children per classroom

Georgia's Pre-K Program 2015-2016

- Slots funded: 84,000
- Classes: 3,842
- Budget:
 - 180 days for children and 190 days for teachers
 - 1% increase for lead and assistant teachers, included in the rates
- New training resources:
 - *Off to a Good Start* Lesson Planning Guide
 - GELDS Toolbox

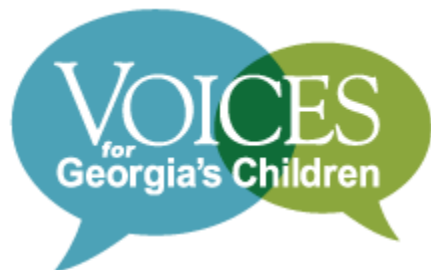
Georgia's Pre-K Week 2014 - 2015

- 202 visits completed
- Visits by **30 Senators**
 - 54% of the Senate
 - Four were new Pre-K Week participants
- Visits by **83 Representatives**
 - 46% of the House
 - 23 were new Pre-K Week participants
- Over the last three years of Georgia's Pre-K Week, 169 members of the current legislative body have visited a Pre-K classroom.
 - 72% of the current General Assembly

Georgia's Pre-K Week 2015-2016

We invite the DECAL board members to visit Georgia Pre-K classrooms in their local communities to build public commitment for early learning.

- October 5-9, 2015
- Contact Meghan McNail to schedule a visit –
Meghan.mcnail@decals.ga.gov



Supporting Social Emotional Development

Jennie Couture
Director of Practice and Supports



Framing the Issue

- Critical social emotional skills are developed during the birth to third grade period.
- Early problem behavior is predictive of future challenges.
- Early educators feel unprepared to address challenging behavior.
- Increased suspension and expulsion
 - 14,292 Georgia children ages 5-8 received out of school suspensions in 2014.
 - Preschool children are three times more likely to be expelled than K-12 students.
 - A disproportionate number of African American children are suspended and expelled each year.

Federal Focus on Social Emotional Development

- US ED and HHS joint policy statement on preschool expulsion
- Child Care and Development Block Grant (CCDBG) reauthorization:
 - States should have policies regarding social emotional behavioral health of young children.
 - State professional development system should include training and technical assistance to providers in:
 - Promoting social emotional development.
 - Implementing evidence-based frameworks such as the Pyramid Model of Positive Behavior Interventions and Supports (PBIS).

Georgia's Response

- GaDOE began implementing the PBIS framework in 2007 in response to high suspension and expulsion rates and disproportionality.
- GaDOE has trained more than 650 schools, and more than 20% of systems are implementing PBIS.
- School Climate Star Ratings began in the 2014-2015 school year.
- DECAL participates as part of GA DOE's strategic planning team to ensure developmentally appropriate implementation of the PBIS work in early childhood programs.

Georgia's Response

- DECAL resources and staff reallocated to focus on supporting social emotional development and competence
 - Research-based model framework identified
 - PBIS Manager hired
 - Inclusion Specialists' work reframed to include supporting PBIS work
- Professional Development and resources developed

Georgia's Response

- Pyramid Model for Supporting Social Emotional Competence in Infants and Young Children
 - Tiered intervention framework of evidence-based practices
 - Developed by two federally funded projects
 - Based on a public health model: promotion, prevention, and intervention
 - Aligned with K-12 model

Georgia's Response

- Georgia Pyramid Model State Leadership Team
 - Established in January 2015
 - State level partners
 - DOE
 - DECAL
 - DBHDD
 - DPH
 - Get Georgia Reading
 - Supports coordinated and aligned implementation in birth to eight settings across the state

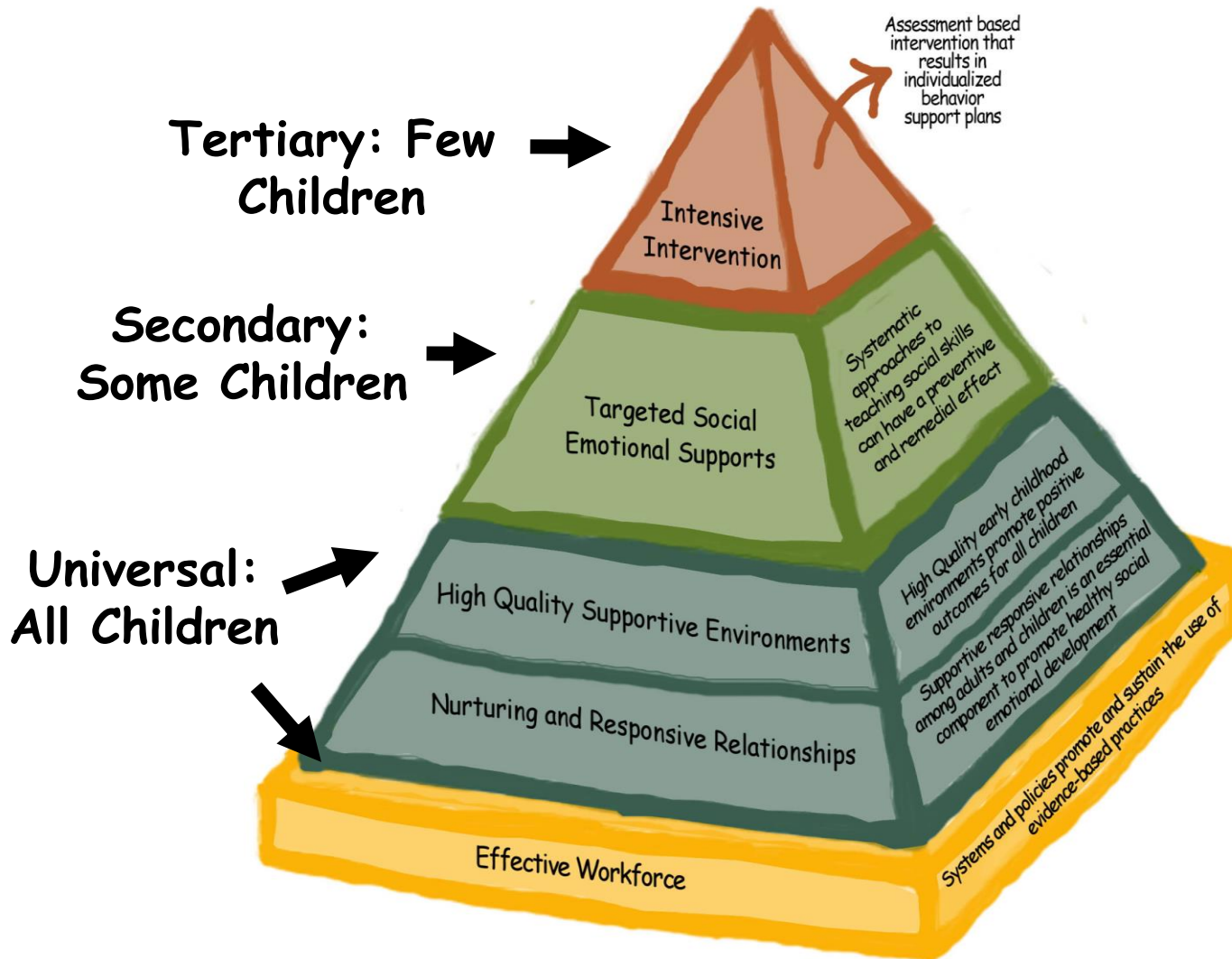
- **Core Values include:**

- All children are capable, competent individuals and thrive in high quality learning environments.
- Children are individuals who develop at varying rates.

- **Guiding Principles include:**

- All children can be taught social emotional skills.
- A research based framework of practices must be prevention based and promote social engagement.
- Meaningful, intentional professional development for teachers and families is essential.

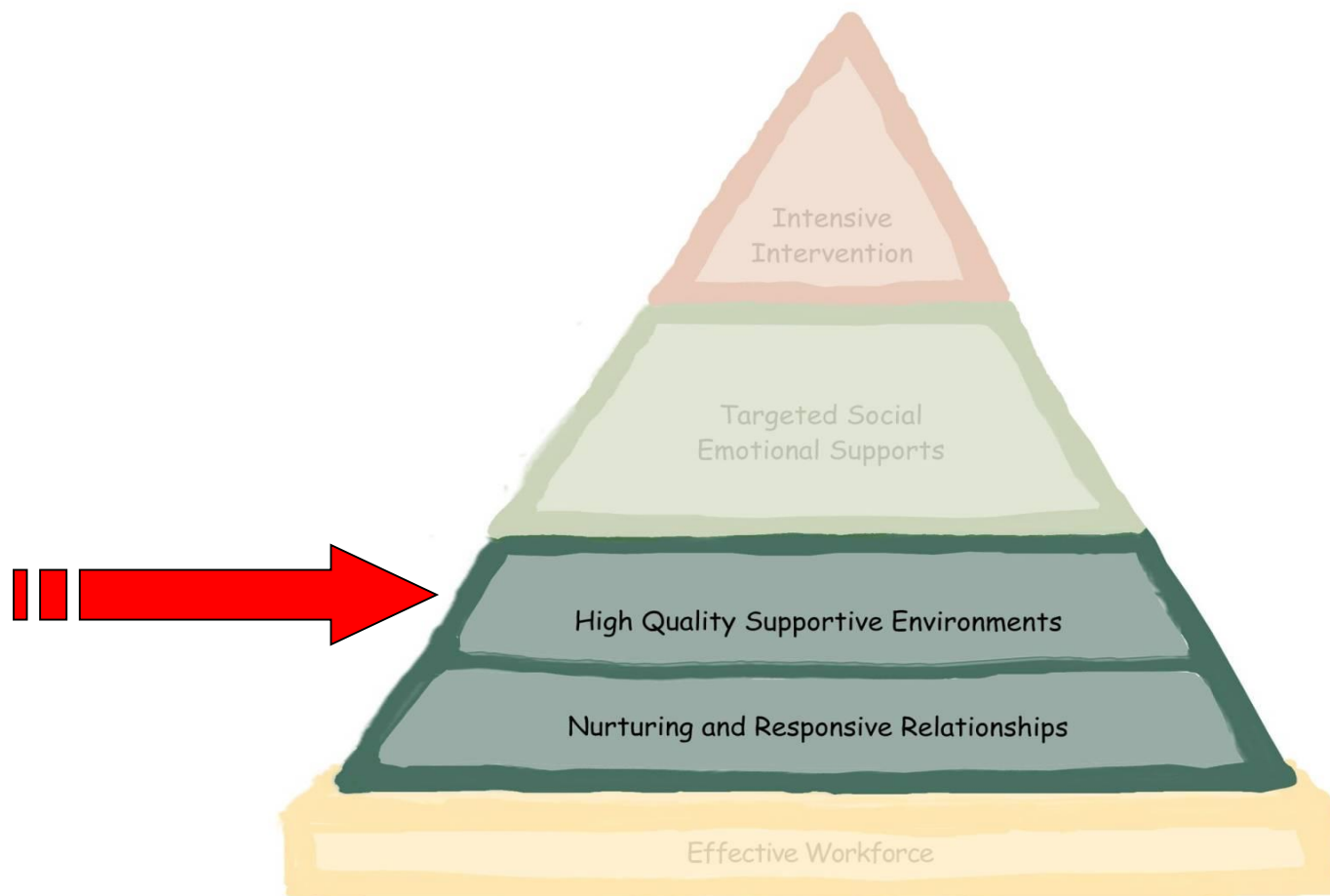
Pyramid Model for Supporting Social Emotional Competence in Infants and Young Children



Effective Workforce



Nurturing and Responsive Relationships and High Quality Supportive Environments



Nurturing and Responsive Relationships

- Foundation of the pyramid
- Essential to healthy social development
- Includes relationships with children, families, and team members



Some Strategies...

- Making deposits
- Reframing our thoughts
- Family interactions

High Quality Supportive Environments

- Inclusive early care and education environments
- Universal design for learning
- Making accommodations, providing support

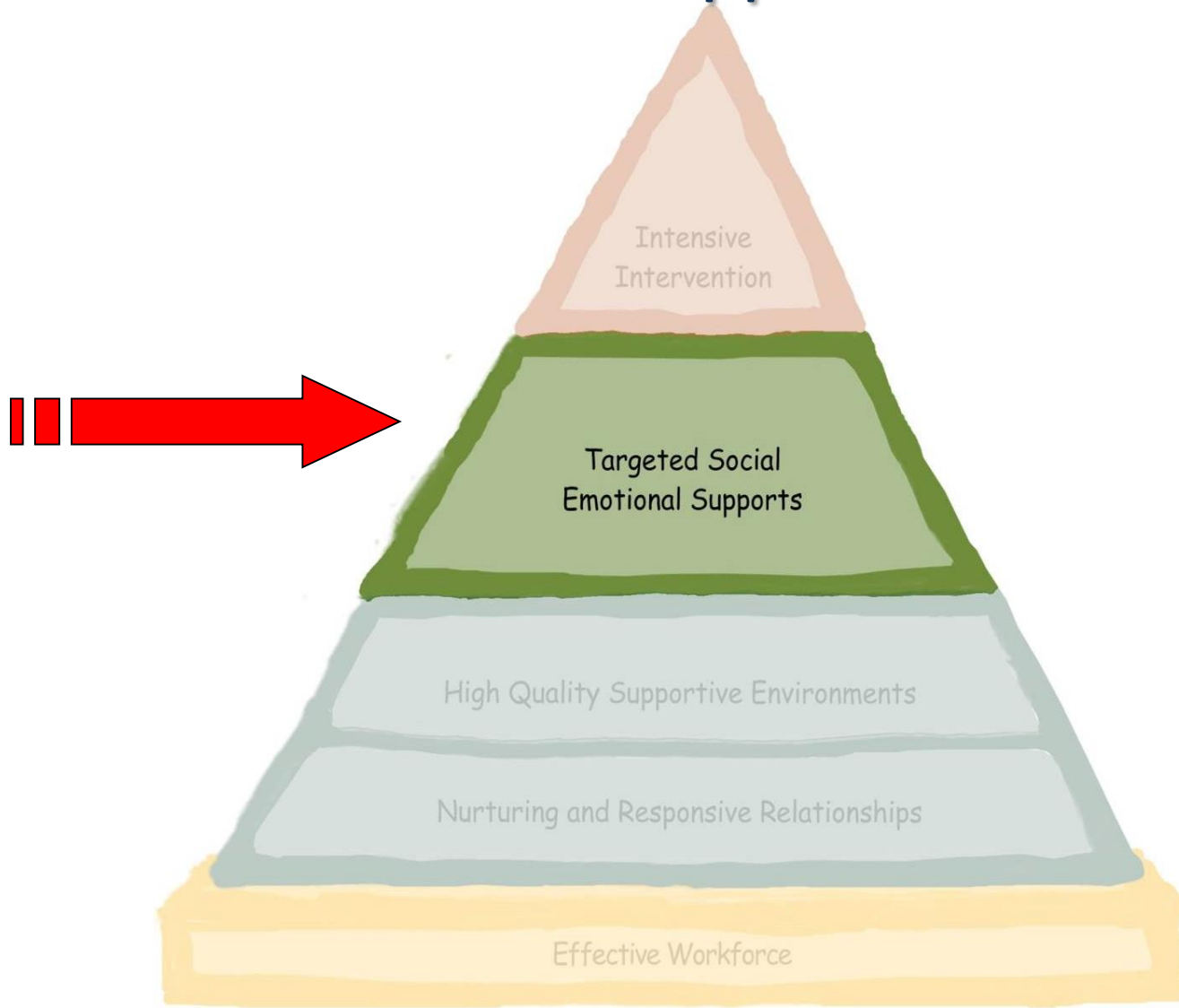


Some Strategies...

- Physical Design
- Environmental Cues
- Schedules and Routines
- Transitions
- Rules and Expectations



Targeted Social Emotional Supports



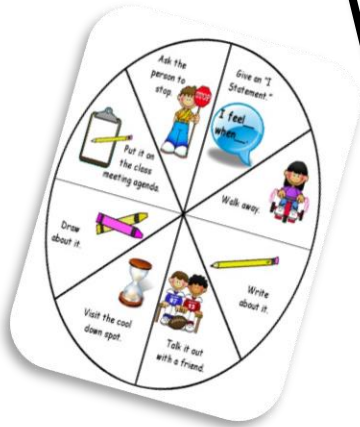
Targeted Social Emotional Supports

- Emotional literacy
- Self regulation
- Problem solving
- Friendship skills

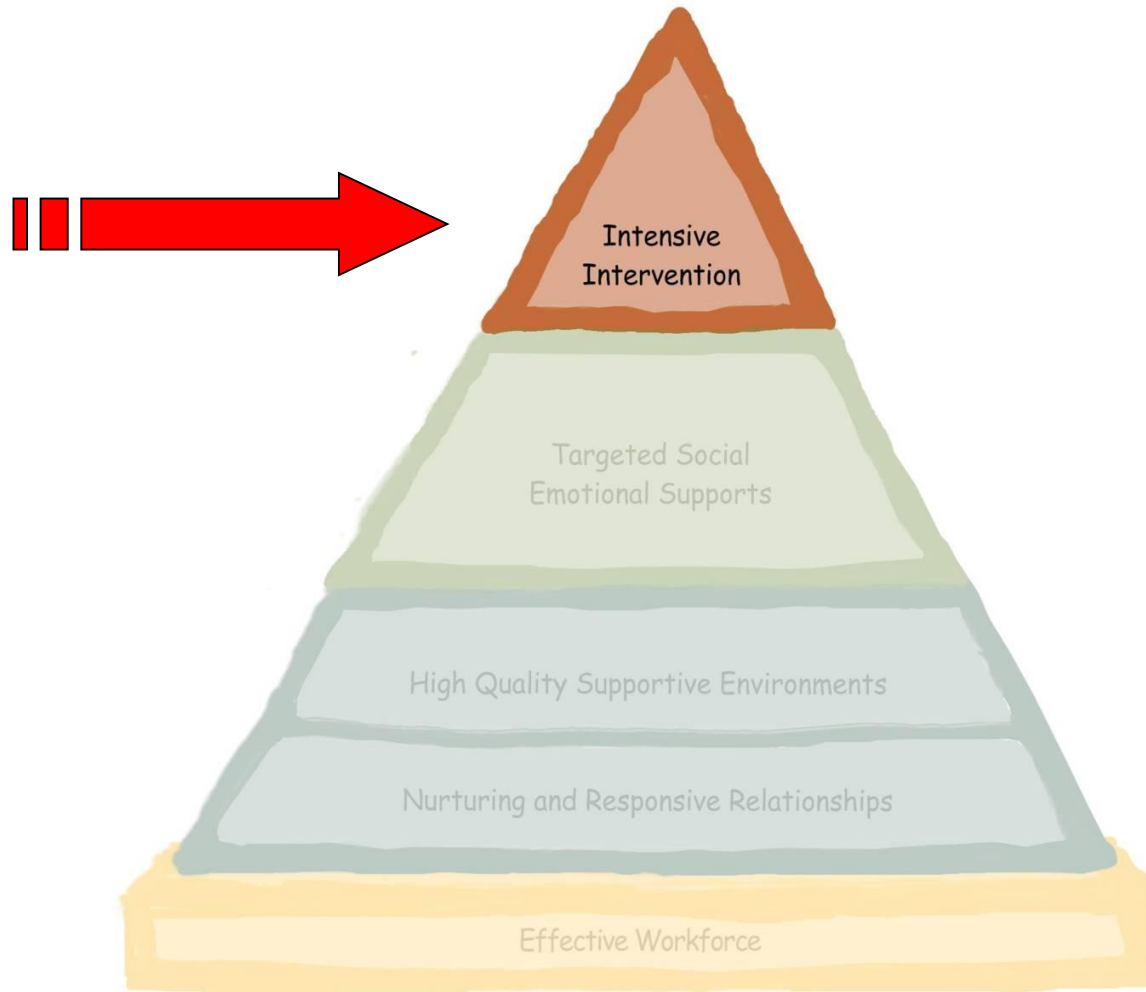


Some Strategies...

- Explicit instruction
- Increased opportunities for instruction, practice, feedback
- Family partnerships
- Progress monitoring and data-based decision making



Intensive Intervention



Intensive Intervention

- Family centered, comprehensive interventions
- Assessment-based
- Skill-building



Some Strategies...

- Data collection
- Form and function
- Setting events
- Referrals

Georgia's Response - DECAL

- Supporting the understanding of child development and social emotional skills:
 - Resources:
 - GELDS
 - Online modules
 - Training:
 - Quality Rated training
 - Inclusion Specialist training
 - Onsite technical assistance and coaching:
 - Inclusion Specialists technical assistance
 - PBIS Demonstration Sites

Georgia PBIS Demonstration Sites

- Collaborative effort: DECAL, DOE, and *Get Georgia Reading*
- Extensive training provided through a grant from the Woodward Foundation to *Get Georgia Reading*
- DECAL staff are supporting implementation of the model in **four** early learning programs across the state
- *Get Georgia Reading* staff are supporting implementation in early learning programs and elementary schools in **three** metro county school systems

Demonstration Site Commitments

- To be eligible as a demonstration site, programs must:
 - Administer Georgia's Pre-K Program
 - Identify a site leadership team that will meet at least monthly
 - Site leadership teams must include:
 - Administrator
 - Classroom teacher
 - Participate in intensive ongoing training and coaching
 - Collect and use evaluation data

DECAL Demonstration Sites

Program	Location	External Coach
Richmond Hill Montessori	Bryan County	Katie Hagan
Crisp County Pre-K	Crisp County	Esther Duggan
Kindercare #1544	Lawrenceville	Gwin Bateman
Kindercare # 1690	Marietta	Yolanda Seabrook

Get Georgia Reading Demonstration Sites

System	Program	Coach
Fulton	Sheltering Arms Welcome All Center	Leah Black
	Brookview Elementary	
	Seaborn Lee Elementary	
DeKalb	Childcare Network- Candler Rd	Deanna Hibbard
	McNair Discovery Learning Academy	
	Toney Elementary	
Atlanta City	Whitefoord, Inc	Brandy Fair
	Deerwood Academy	
	Whitefoord Elementary	

Want More Information?

- Center on the Social Emotional Foundations for Early Learning

<http://csefel.vanderbilt.edu/>

- Technical Assistance Center on Social Emotional Intervention

<http://challengingbehavior.fmhi.usf.edu/>

- Pyramid Model Consortium

<http://www.pyramidmodel.org/>

Contact Information

- Cassa Andrews

Cassa.Andrews@dec.al.ga.gov

- Jennie Couture

Jennie.Couture@dec.al.ga.gov



System Reform Update

Kristin Bernhard
Deputy Commissioner for System Reform



System Reform Overview

● Race to the Top Early Learning Challenge Grant

- Competitive \$51.7M grant awarded to the state for cross-agency implementation between 2014-2017
- Composed of 12 projects including the Early Education Empowerment Zones (E3Zs)

● Quality Rated

- Georgia's tiered quality rating and improvement system to assess, communicate, and improve the quality of child care programs

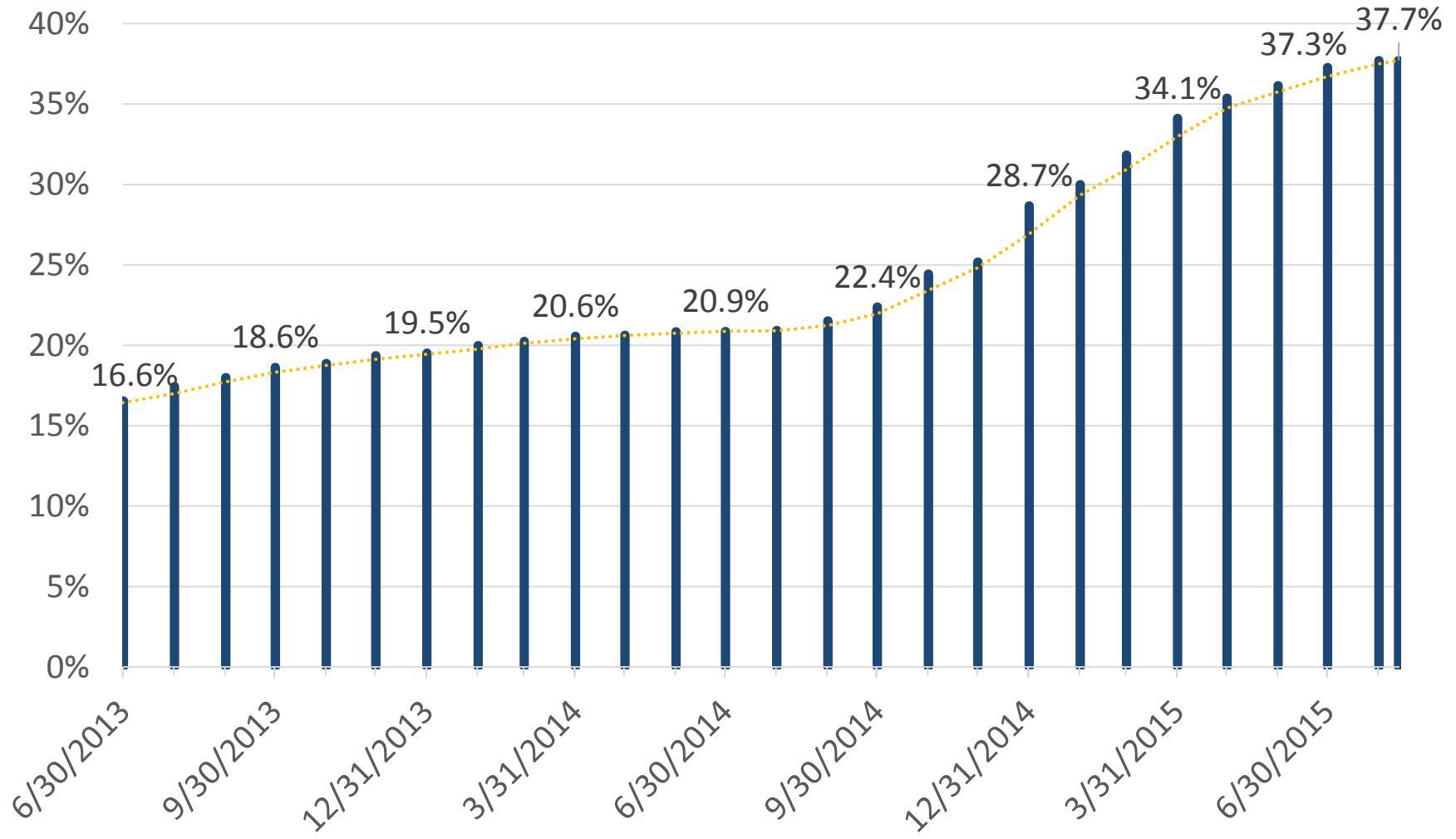
● Child Care Resource and Referral System

- Provides technical assistance through a network of six regions and 120+ employees to center and family child care on how to improve teaching and overall program quality
- Provides consumer awareness to families about how to find high quality child care

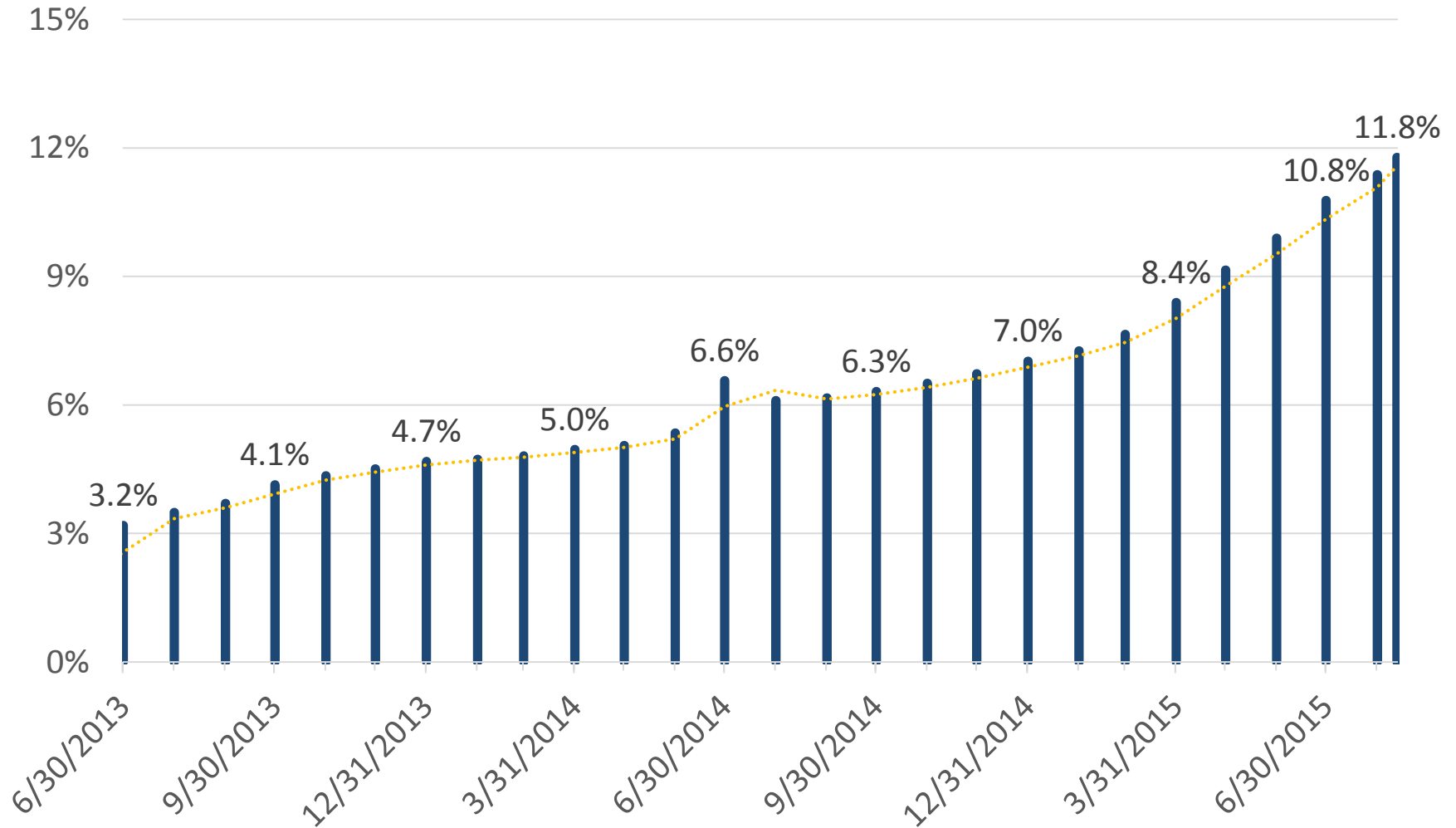
● Early Head Start – Child Care Partnership Grant

- Funds child care programs to provide Early Head Start services for 168 infants and toddlers in Clayton, Fulton, DeKalb, and Gwinnett counties
- Creates two early education hubs - at Sheltering Arms and Quality Care for Children - to support child care programs in meeting the Head Start Performance Standards

Quality Rated: % Participating



Quality Rated: % Rated

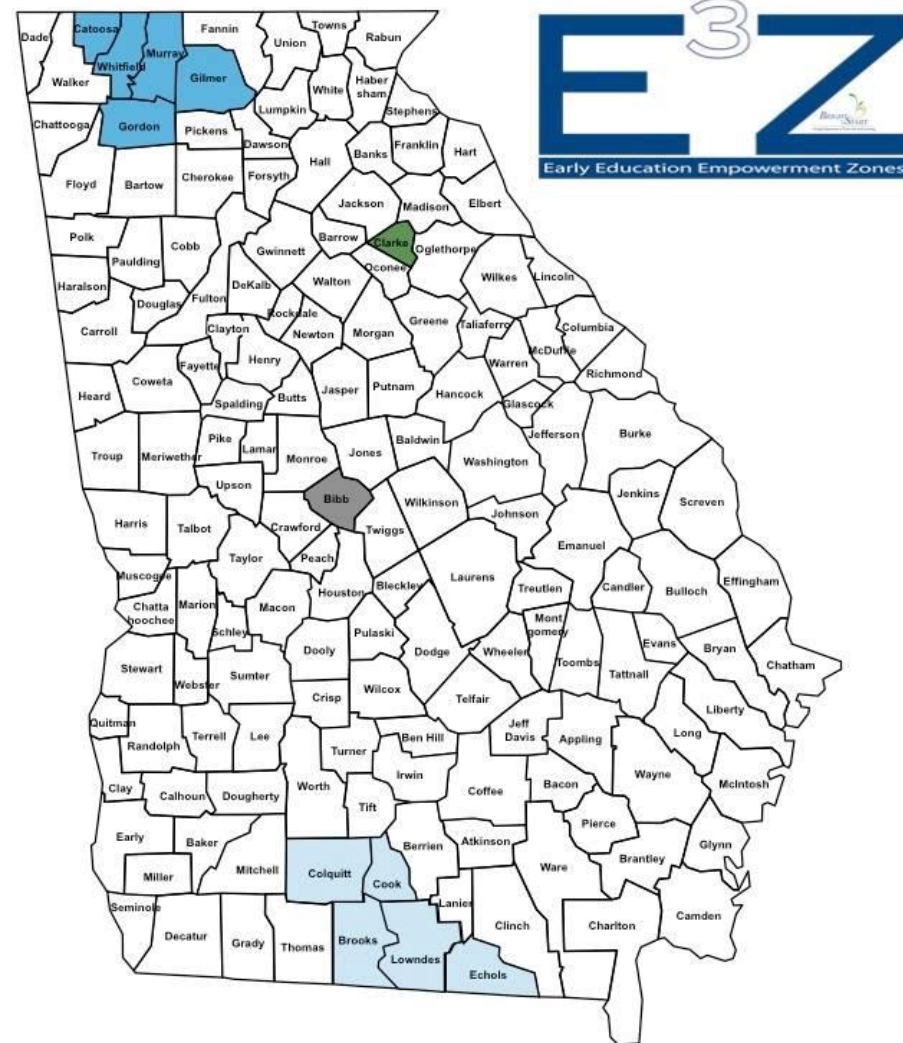


Quality Rated Subsidy Grants

- Competitive grants funded by ELC awarded to 2- or 3-Star Quality Rated providers to serve CAPS eligible families
- Programs must:
 - Maintain 2- or 3-Star Quality Rated status for duration of grant agreement
 - Check eligibility at the program level
 - Have licensed capacity to serve requested slots
 - No more than 50% of total class enrollment in grant funded slots
 - Complete Lawful Presence Verification
 - Complete grant application
- Providers receive:
 - Increased reimbursements (90th percentile of the market based on the 2013 market rate survey)
- Parents receive:
 - High quality child care
 - \$0 family fees
 - Case management handled by child care provider
- First round of grants awarded in summer 2015; next round expected late fall 2015

Tiered Family Co-Pay

- Launched July 1, 2015 in the E3Zs
- Rewards families who choose a Quality Rated child care setting by allowing them to pay a flat fee depending on the Quality Rated level of the program.
 - 1 star: \$15
 - 2 star: \$10
 - 3 star: \$5
- Goals: Increase parent awareness of the importance of quality educational experiences for their children at early ages.



Economic Development Grants

- ELC funded grant opportunity up to \$100,000 per child care program offered in partnership with the Department of Community Affairs (DCA) to:
 - Expand capacity to an existing child care learning center located in an E3Z. (The expansion must create a minimum of two new full time jobs that will serve infants and toddlers.)
 - Open a new child care learning center in an E3Z.
- Eligible uses of funding:
 - Equipment for classrooms serving infants and toddlers (ages birth through three)
 - Salary subsidies for teachers serving infants and toddlers (ages birth through three)
- Grant application and additional information available at:
<http://dca.ga.gov/E3Z>

Quality Rated Advisory Committee

 Apply for the
QUALITY RATEDSM
ADVISORY COMMITTEE
today!

For more information and the
application, visit:
bit.ly/QualityRatedAC

Applications are due by 5pm on
Tuesday, August 18th.



The Quality Rated Advisory Committee will be charged with creating **meaningful reforms** to Quality Rated that will foster **sustainable growth** to achieve 100% participation in Quality Rated by the end of 2017. **Early childhood education stakeholders** and **child care providers** that are rated (within the past year) and participating in Quality Rated are eligible to apply.

Your experiences in Quality Rated and early childhood education will provide for a direct feedback loop to Quality Rated staff to **help improve** the Quality Rated process.

Lunch

(Served in Entry Area)

Committee Meetings

Programs – Hickory

Budget/Finance – Willow

System Reform – Cypress

(The public is welcome to attend/observe committee meetings but may not participate in the committee's discussion.)

Committee Reports

- Budget/Finance – Carlene Talton
- Programs – Sherron Murphy
- System Reform – Susan Harper

Welcome to the Board of Early Care and Learning

Public Comments

August 20, 2015

Remaining Board Meeting Dates 2015

November 12, 2015

Board Meeting Dates for 2016 *(Tentative)*

February 18, 2016

May 12, 2016

August 18, 2016

November 10, 2016