



Welcome to the Board of Early Care and Learning

August 21, 2014



Bright from the Start: Georgia Department of Early Care and Learning

www.dec.state.ga.us

Approval of Agenda and Minutes

- Approve 8-21-14 agenda
- Approve 5-22-14 minutes



Inspiration

Dr. Jerri Kropp



Bright from the Start: Georgia Department of Early Care and Learning

www.dec.al.ga.gov



Board Member Updates

Board members report on their recent DECAL-related activities in their districts.





Commissioner's Update

Amy M. Jacobs
Interim Commissioner



Bright from the Start: Georgia Department of Early Care and Learning

www.dec.al.ga.gov

Special Recognition

Retiring before next board meeting

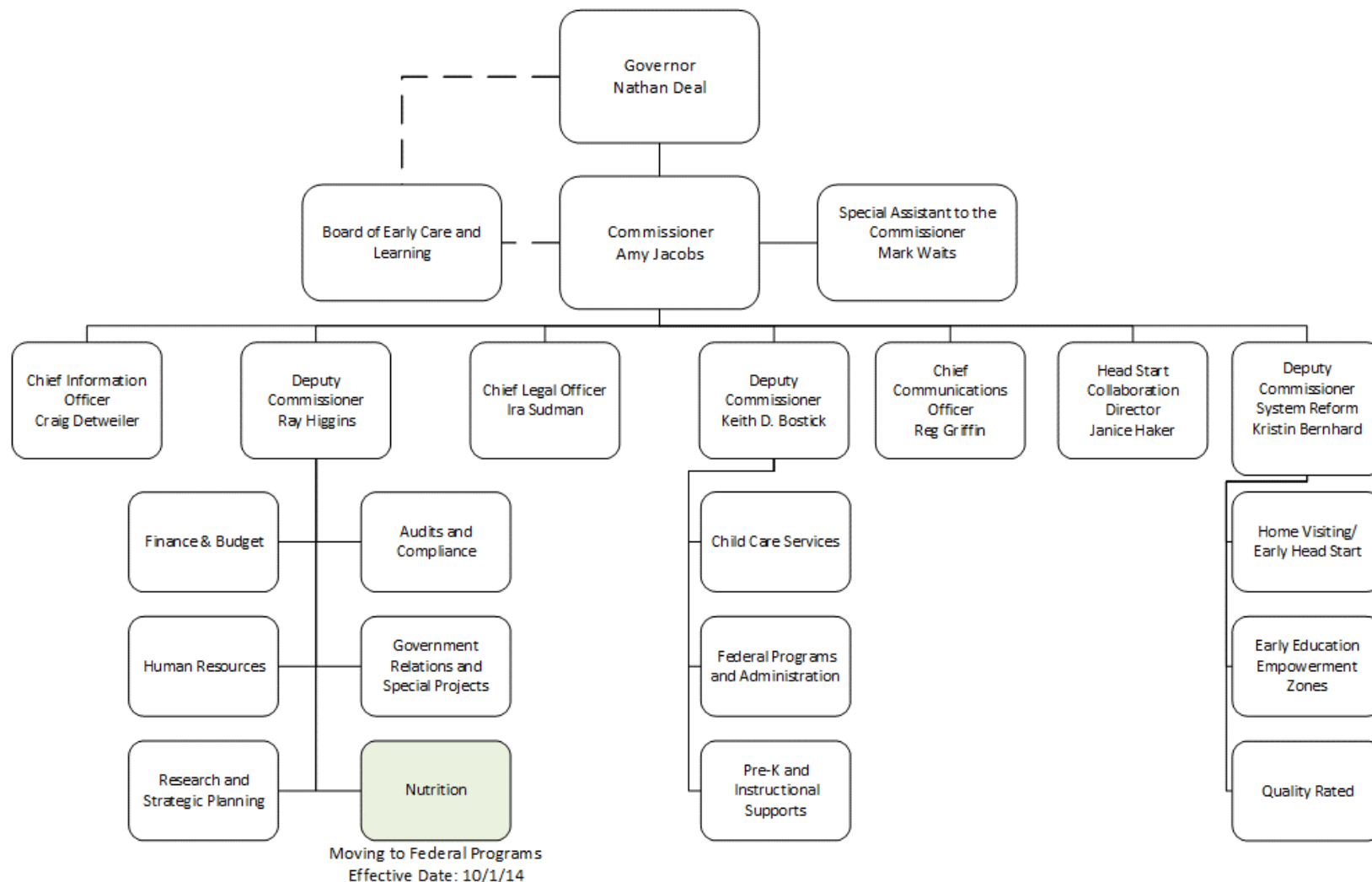
- Earline Huston – 30 years
- Sandra Kelley – 30 years
- Judy Steigle – 34 years

Congratulations...and thanks!!!

Quality Rated Fundraising

- Coordinated by Coxe Curry
- Partnering with GEEARS and Georgia Family Connection Partnership
- Visits Accomplished or Upcoming
 - J Bulow Campbell Foundation
 - Zeist Foundation
 - Robert W. Woodruff Foundation
 - Cox Foundations
 - R. Howard Dobbs Jr. Foundation
 - Tull Charitable Foundation
 - Goizueta Foundation
 - Alice Huffard Richards Charitable Foundation

About DECAL: Current Organizational Structure



Questions & Comments from Board





Finance, Nutrition & Legislative Update

Ray Higgins

Deputy Commissioner for Finance and Administration



Bright from the Start: Georgia Department of Early Care and Learning

www.decal.ga.gov

Finance Update

2014 As of June 30th	Budget	Expenditures*	Remaining Balance	0% Remaining
BY PROGRAMS				
Child Care Services	\$245,403,662.00	\$245,403,661.43	\$0.57	0%
Pre-K + (HS)	\$312,348,630.00	\$305,259,448.45	\$7,089,181.55	2%
Quality Initiatives	\$21,761,396.00	\$21,761,395.24	\$0.76	0%
Nutrition	\$124,844,565.00	\$124,844,564.85	\$0.15	0%
Total Expenses	\$704,358,253.00	\$697,269,069.97	\$7,089,183.03	1%
BY FUNDING SOURCE				
State General	\$55,451,852.00	\$55,451,851.61	\$0.39	0%
State Lottery	\$312,173,630.00	\$305,084,448.45	\$7,089,181.55	2%
Federal	\$336,587,263.00	\$336,587,262.91	\$0.09	0%
Other	\$145,508.00	\$145,507.00	\$1.00	0%
Total Funds	\$704,358,253.00	\$697,269,069.97	\$7,089,183.03	1%
* Includes encumbrances.				
License Fees Collected:	\$659,281.25			
Penalties Collected:	\$221,057.31			
Total for SFY 2014:	\$880,338.56			

Nutrition Services – Summer Food Service Program 2014

- Participation Data
 - Number of Sponsors: **112** (19.6% increase)
- Number of Sites: **1,618**
- Number of Meals Served (as of 8/19/2014)
 - **4,121,220** (13.57% increase)
- Number of Counties DECAL Served: **94**
 - Percentage change: **7.4%** increase

Legislative Update





Programs Update

Keith D. Bostick, L.C.S.W.
Deputy Commissioner for Programs



Bright from the Start: Georgia Department of Early Care and Learning

www.decal.ga.gov

Good Health and Nutrition Can Be Fun

Looking through the Eyes of Georgia's Earliest Learners

Suezenette McDonald

1057 Gregory Trail Lawrenceville, Ga 30043 (404)477-9026

License # FR-27401



Georgia's earliest learners are having fun while learning about good health and nutrition.

School Garden

Family Style Dining

Active Play and Movement

**In the school's
garden
children learn...**

How to prepare and care for plants





The growth cycle of plants





About Insects





Math Skills





© Copyright By Suezenette McDonald

**From the garden to the table
Family style dining provides
more opportunities for learning**

Children enjoy serving themselves



Handling utensils and serving food

Children are improving their fine motor skills



Taking turns, saying please, thank you and no thank **YOU**
Children are practicing social skills



Choosing the amount of food desired

Children select portion sizes



Seeing other children try new foods

Children make food choices



Active play and movement
are as important as good nutrition
for a child's
growth, health, and development



Running



Jumping



Crawling

Climbing





Dancing





Playing kickball





Mowing the lawn



Going for a swim



Going for a drive



Child Care Services Update

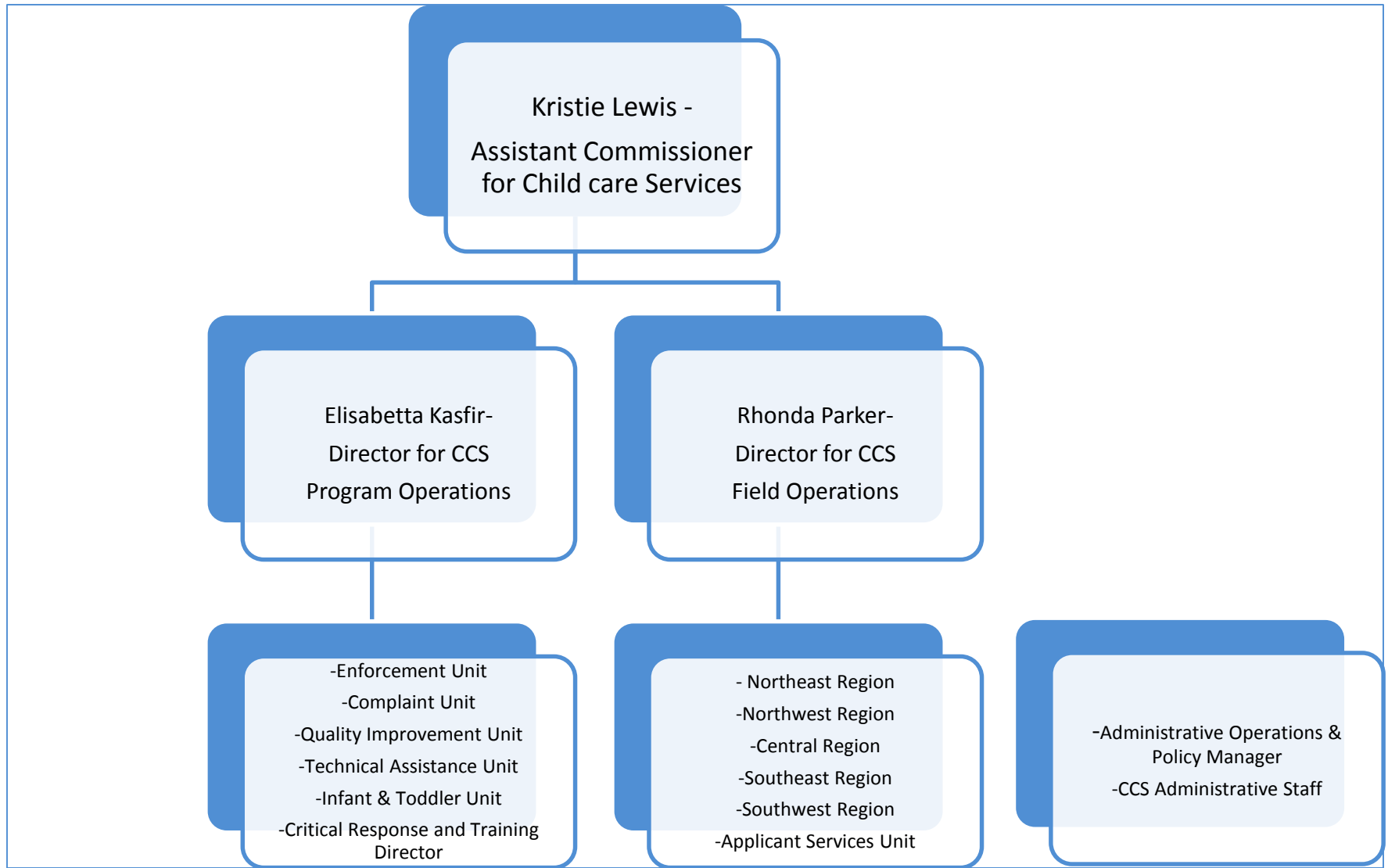
Kristie Lewis
Assistant Commissioner for Child Care Services



Bright from the Start: Georgia Department of Early Care and Learning

www.dec.al.ga.gov

Child Care Services Org Chart



Child Care Services Data *(as of August 14, 2014)*

Facility Type	Count	Capacity
CCLC	2,917	342,215
FDCH	2,310	13,856
GDCH	228	3,543
TOTAL	5,455	359,614
FY2014 VISIT COUNT	13,726	



Compliance Statistics

	FY 2014					FY2015			
	Compliant	Not Compliant	Not Determined	Total		Compliant	Not Compliant	Not Determined	Total
CCLC	2,648	288	71	3,007	CCLC	2,540	350	27	2,917
FDCH	2,312	93	253	2,658	FDCH	2,139	130	41	2,310
GDCH	225	21	7	253	GDCH	190	36	2	228
Total	5,185	402	331	5,918	Total	4,869	516	70	5,455

Comparison of Percentages by Year

Ending	June 30, 2011	June 30, 2012	June 30, 2013	June 30, 2014
Compliant	90%	92%	88%	89%
Not Compliant	10%	8%	7%	10%
Not determined	N/A	N/A	5%	2%

Health and Safety Activities

- Enforcement Sanction Task Force
- Injury Prevention Task Force
- Summer Day Camp visits
- Exemption Call Project





Federal Programs

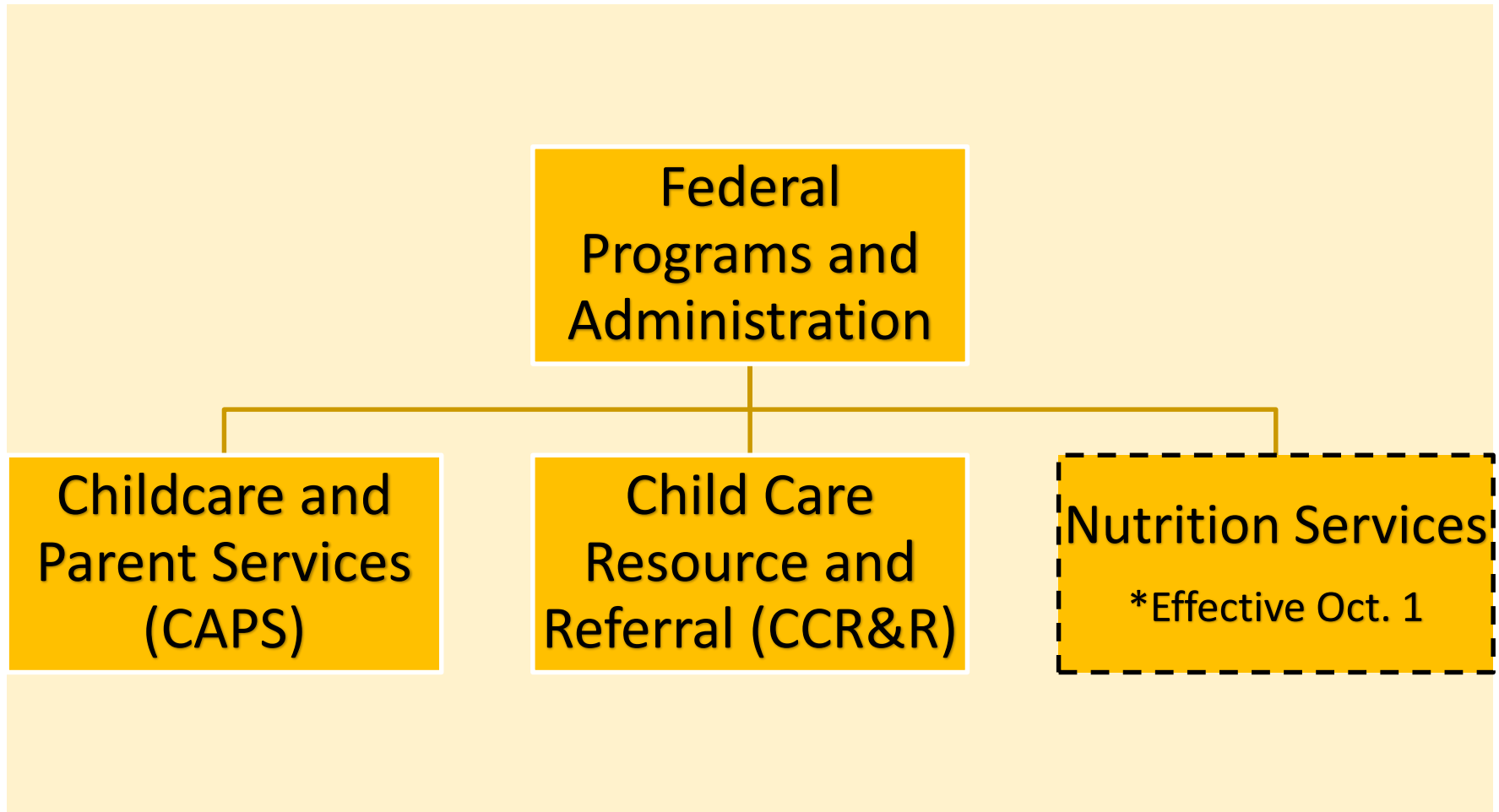
Deidria W. Bolden
Assistant Commissioner for Federal Programs and
Administration



Bright from the Start: Georgia Department of Early Care and Learning

www.dec.al.ga.gov

Federal Programs Division Updates



Updates from the Federal Level

- The Office of Child Care is proposing new rules governing the use of Child Care and Development Funds (CCDF).
- New rules impact areas including:
 - Improving health and safety in child care
 - Establishing family-friendly policies
 - Improving the quality of child care
 - Strengthening program integrity



Childcare and Parent Services (CAPS) Highlights

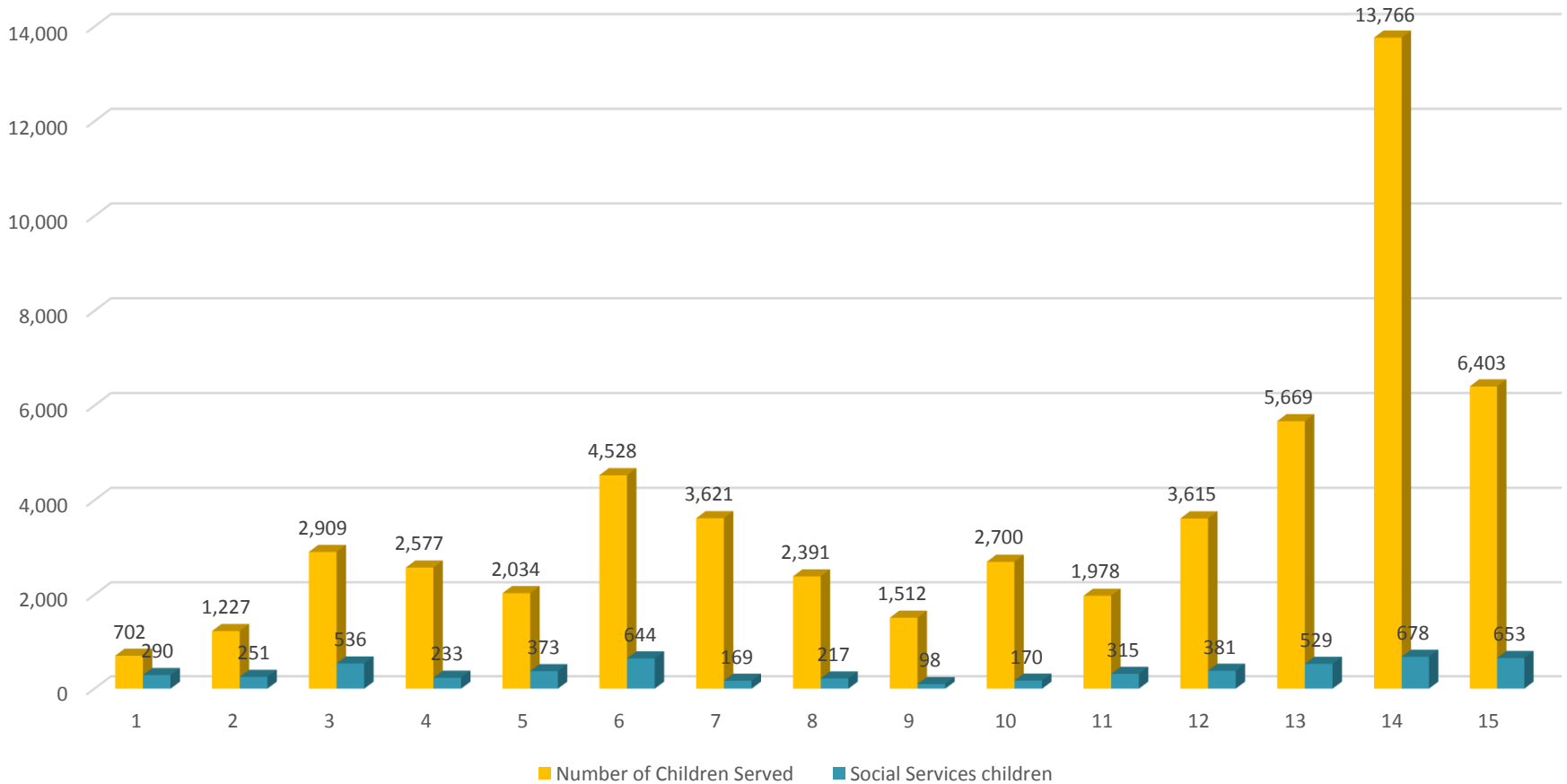
- Transition of eligibility staff
 - Current CAPS eligibility functions currently performed at DHS will transfer to DECAL within the next 12-18 months.
- Integrated Eligibility System (IES)
 - Agreement between four state agencies (DPH, DCH, DHS, DECAL**) to develop a statewide repository for eligibility and data sharing



****DPH**: Dept. of Public Health; **DCH**: Dept. of Community Health; **DHS**: Dept. of Human Services

Children Receiving Subsidized Child Care by Region – July 2014

Children Served



Child Care Resource & Referral Agencies (CCR & R)

- Comprehensive support to programs participating in and working toward a quality rating





**CHILD CARE RESOURCE
& REFERRAL**
OF SOUTHWEST GEORGIA AT ALBANY
DARTON STATE COLLEGE



- CCR&R responsibilities are instrumental in supporting Early Learning Challenge Grant outcomes.
 - Recruit new programs to participate in Quality Rated
 - Provide technical assistance and other support to all Quality Rated programs
 - Offer professional learning opportunities

BREAK
(10 minutes)



Georgia's Pre-K Program & Instructional Support Update

Susan Adams
Assistant Commissioner for Pre-K
& Instructional Support



Bright from the Start: Georgia Department of Early Care and Learning

www.dec.al.ga.gov

Pre-K and Instructional Supports Division Update

Georgia's Pre-K
and Instructional
Supports

Georgia's Pre-K
Program

Professional
Learning

Inclusion and
Family
Engagement

Georgia Early Learning and Development Standards (GELDS) Update

- Continuing to support teachers and administrators with GELDS training
 - Standards 101 course, Pre-K training
- Producing print and video resources for families and early childhood education workforce
 - Teacher Activity Tool Box coming soon
 - “Play to Learn” 30-second TV spots airing on GPTV

GELDS Update *(continued)*



GELDS Update *(continued)*

- Partnering with World-Class Instructional Design and Assessment (WIDA) Consortium to develop training and resources to support Georgia's Dual Language Learners
- Creating tiered professional development opportunities for teachers, providers, and families that will help them move from knowledge to successful application

Summer Transition Program (2010-2014)

- Six-week intensive, academic program
 - Targeted program eligibility based on age and family income
 - Funded through federal Child Care and Development Fund (CCDF)
- Two Models
 - Rising Kindergarten Program (2010-2014)
 - Rising Pre-K Program (2013-2014)
- Evaluation conducted by Frank Porter Graham Child Development Institute-UNC

Summer Transition Program Characteristics

- Builds on Georgia's Pre-K Program
- Focuses on language and literacy skills
- Lower teacher: child ratio and class size
- 6.5 hour instructional day
- Includes family engagement
 - Transition Coach assists with family education and transition services
- Includes arts integration
- Incorporated into Georgia's Early Learning Challenge Grant
 - Early Education Empowerment Zones (E³Zs)

Rising-K Summer Transition Program

- Developed for children who did not attend Georgia's Pre-K or attended Georgia's Pre-K or Head Start but need additional support before attending Kindergarten in the fall
- Offered since 2010
 - Summer 2014: 60 classes, 960 students

Rising Pre-K Summer Transition Program

- Focuses on children whose home language is Spanish and who are enrolled to attend Pre-K in the fall
 - Based on results from Georgia's Pre-K Longitudinal Study
- Includes instruction in both English and Spanish
 - One teacher is fluent in English, and one teacher is fluent in Spanish.
- Small pilot for the first two years
 - 19 classes in 2013 and 20 in 2014
- Focuses on supporting Dual Language Learners
 - Professional Development
 - Curriculum

Evaluation of Summer Transition Programs

- Conducted by researchers from FPG Child Development Institute at UNC-Chapel Hill
- Includes child assessments (Rising K), classroom quality (Rising K, Rising Pre-K), and other measures related to program implementation (Rising Pre-K)
- Data collected in unique, efficient partnership with DECAL.

Program Evaluation Findings

- Results indicated improvement in children's skills for all four years of the *Rising Kindergarten Program*.
 - *Comparison groups not utilized*
- In both *Rising Kindergarten* and *Rising Pre-K*, classroom quality was similar to other programs.
- Both Spanish and English were used regularly in *Rising Pre-K* classrooms, thereby maximizing learning opportunities for dual-language learners.
(2013)

Table 2.

Child Assessment Effect Sizes in Rising Kindergarten Programs, 2010-2013

	2010 Effect Size	2011 Effect Size	2012 Effect Size	2013 Effect Size
Letter Naming				
Total letters named correctly	.18	.16	.22	.18
IGDI				
Picture Naming Score	.41	.28	.36	.28
Rhyming Score	.27	.38	.41	.49
Alliteration Score	.25	.46	.34	.42
Story & Print Concepts				
Total proportion correct	.44	.47	.42	.56
<i>Book knowledge sum</i>	.49	.43	.36	.45
<i>Book comprehension sum</i>	.22	.29	.47	.50
<i>Print awareness sum</i>	.27	.35	.24	.37

Note: All effects were statistically significant ($p < .05$)

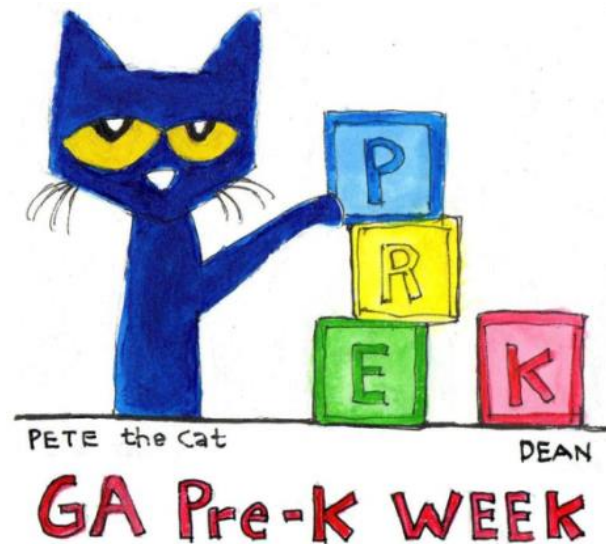
Georgia's Pre-K Week

- 4th Annual
 - October 6-10, 2014
- Sponsored by Voices for Georgia's Children to increase awareness about and support for Georgia's Pre-K Program
- Encourages and facilitates legislators, community leaders, civic leaders, board members, etc. to visit Pre-K classrooms



Board Members & Georgia's Pre-K Week

- Save the dates: October 6-10
- Board members will receive more detailed instructions about arranging visits as the event gets closer.
- We hope you can participate again this year.



Economic Impact Study 2014 Part II



History

- Commissioned first study in 2007 to look at the impact of the early care and education industry on Georgia's economy.
- Information from the study has been used to inform policy and to communicate with stakeholders and policy makers.
 - Regional meetings including legislators
 - Data continually used for reporting and planning
 - Report widely disseminated; other states have used Georgia's model.

Study Includes:

- Statewide survey of early education programs:
 - Financial Data
 - Workforce Data
- Economic impact analysis:
 - Revenue and taxes generated by industry
 - Jobs created
 - Revenue created by the industry enabling parents to work
 - Indirect effects of child care businesses stimulating other industries

Why Another Study?

- Impact of Great Recession
- Increased focus on early care and education
- Need for workforce data
- Better understand the questions to ask

Talking Points for Board Members

- DECAL has commissioned UGA and GSU to conduct an economic impact study similar to the one conducted in 2007.
 - If providers contact you about the survey, confirm that the study is legitimate and encourage them to participate.
- Study results will quantify the economic impact of early education in Georgia.
 - This will benefit providers, teachers, and other businesses that support the industry by demonstrating that early education is a viable economic engine in the state.
 - Study results can also be used to garner additional resources for children and families.

Talking Points for Board Members *(continued)*

- Study is based on information collected through a provider survey.
 - Ensure providers that all their responses will be confidential, and individual responses will never be shared with DECAL.
- Study has full support of DECAL, the DECAL board, and partner associations.



System Reform Update

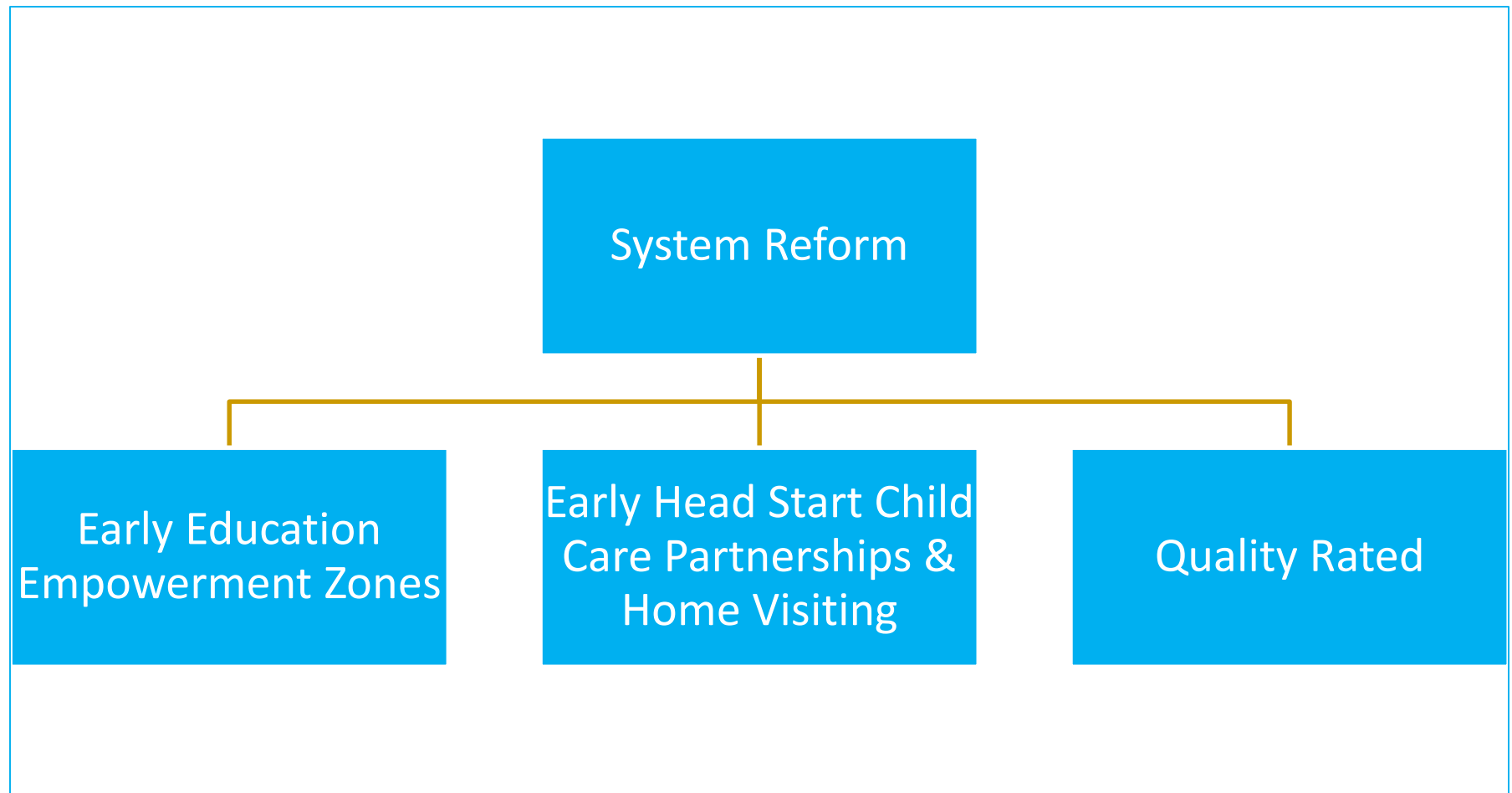
Kristin Bernhard
Deputy Commissioner for System Reform



Bright from the Start: Georgia Department of Early Care and Learning

www.decal.ga.gov

System Reform Division Updates




Quality Rated

Georgia's Tiered Quality Rating & Improvement System (TQRIS) designed to:

- Assess early care and education programs using the Environment Rating Scale and a portfolio of documentation submitted by the program
- Improve quality through professional development and technical assistance
- Communicate the level of quality in early care and education programs through a one-, two-, or three-star designation

Quality Rated Participation

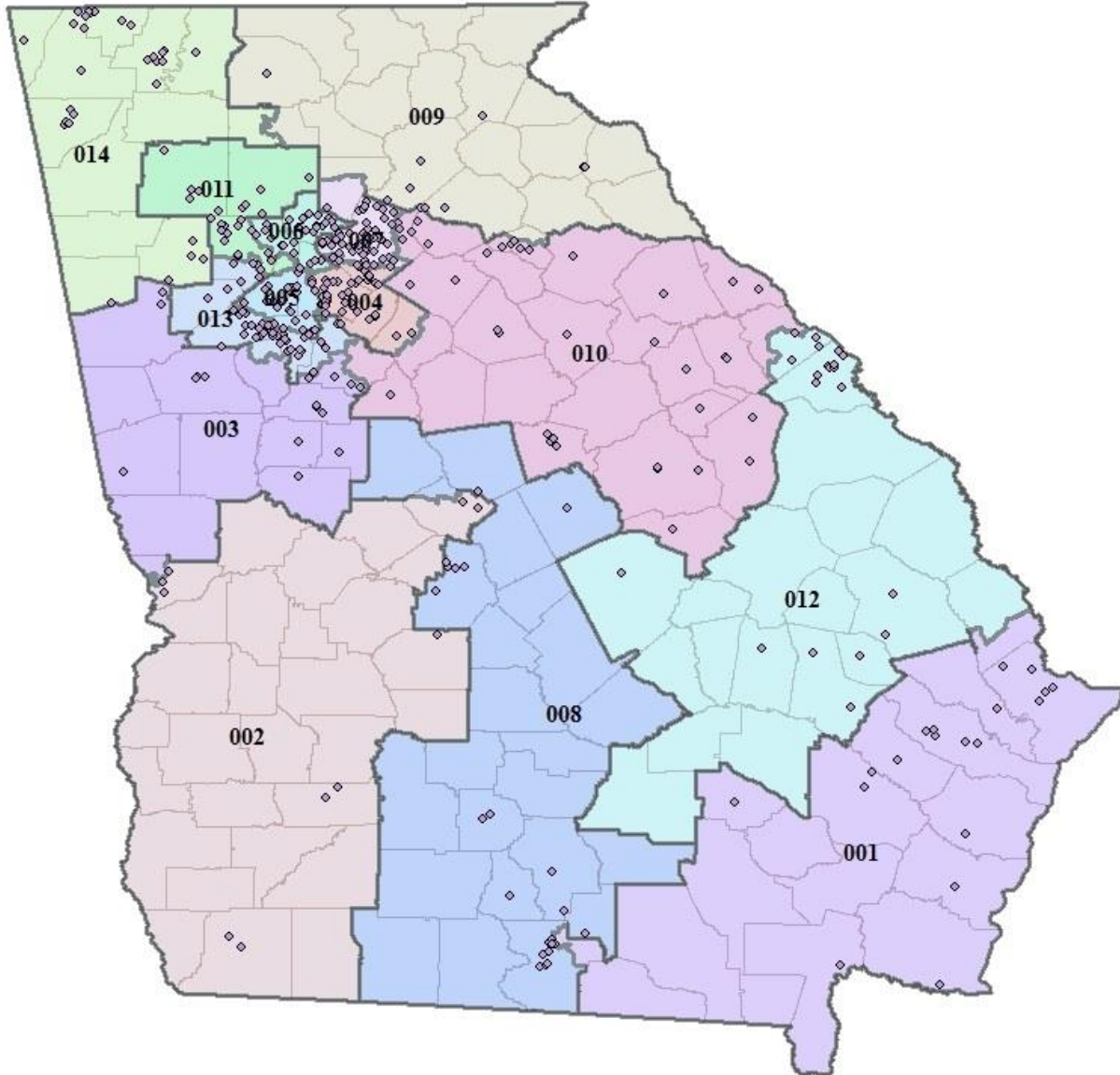
# Currently Participating	% of Total Licensed Child Care Programs	Goal for End of Calendar Year 2014	% of Total Licensed Child Care Programs
1,299	24%	1,755	32%



Participating: Registered for an account and completed a short application on <https://qualityrated.dec.state.ga.us/>



QR Participation Rates Congressional Districts



Quality Rated Participation Push

- Launching a streamlined Quality Rated process October 2014
- Increasing resources for Quality Rated Technical Assistance provided through the CCR&Rs
- Adding information about Quality Rated to all licensing report cover sheets and MAXIMUS communications to providers
- Sending a letter from Commissioner Jacobs encouraging all compliant programs to participate in Quality Rated
- Hosting participation drives in targeted areas

...and looking for your support



Early Education Empowerment Zones (E³Zs)

Dr. Laura Johns
Early Education Empowerment Zone Director



Early Education Empowerment Zones - E³Zs

- Detailed under Strategy 3: Integration
 - ... creating geographically identified zones (E³Zs) with large numbers of children with high needs and aligning key programs and services
- Four Early Education Empowerment Zones (E³Zs) will be selected based on data that indicate areas with populations of children with high needs who are underserved and with community capacity and willingness to devote resources to deliver services to help reduce the achievement gap.
 - Coordinate the delivery of state and local services to young children and their families,
 - Improve the quality of early care and education settings
 - Work with community partners to align the early education work with Kindergarten-3rd grade initiatives.

E³Z Community Meetings

ZONE	COUNTIES	DATE	CONVENER
1 Mid Southwest/ Bulloch	Jenkins, Bulloch, Evans, Tattnall, Toombs, Candler	June 20	Jerri Kropp, DECAL Board Member/Georgia Southern University
2 Southwest	Clay, Terrell, Dougherty, Baker, Mitchell, Grady, Decatur, Seminole	July 2	Susan Harper, DECAL Board Member
3 Northwest	Catoosa, Whitfield, Gordon, Murray, Gilmer	July 29	Philip Ledbetter – Catoosa Collaborative Katy B Green, Ph.D., UGA Archway Victor Morgan/Tangela Johnson, DECAL Board Members
4 Houston	Houston, Dooly, Crisp, Sumter, Macon	July 30	Maggie McGruther, Archway Partnership, UGA Brad Ray – CASA sowegachildren.org
5 South Central 1	Colquitt, Cook, Brooks Lowndes, Echols	July 31	Dr. Shawn Utley – Wiregrass Technical College
6 Richmond Burke	Richmond, Burke	August 1	Valda Simpkins – Augusta Technical College Nancy Webb – Georgia Regents University
7 Clarke	Clarke	August 5	Tim Johnson – Family Connection Partnership Vicki Hawkins – CCR&R
8 Central East	Wilkes, Taliaferro, McDuffie, Warren Hancock, Baldwin, Washington, Glascock, Jefferson	August 7	Wanda Davis, Exec Director – Glasscock Action Partners, Inc.
9 South Central 2	Turner, Tift, Ben Hill, Irwin, Coffee, Telfair, Jeff Davis, Atkinson	August 14	Lisa Kingrey – Turner County Family Connection Partnership
10 Bibb	Bibb	August 20	Ebony Harris, United Way Macon Promise Neighborhood
11 Clayton Spalding	Clayton Spalding	August 22	United Way Metro Atlanta

Next Steps

- August 28 – Recommend final four zones to Commissioner
- October 2 and 3 – Signing days in the zones
- Begin connecting areas not designated as zones with resources to coordinate and enhance services to children with high needs in their communities



Early Head Start- Child Care Partnership Grant

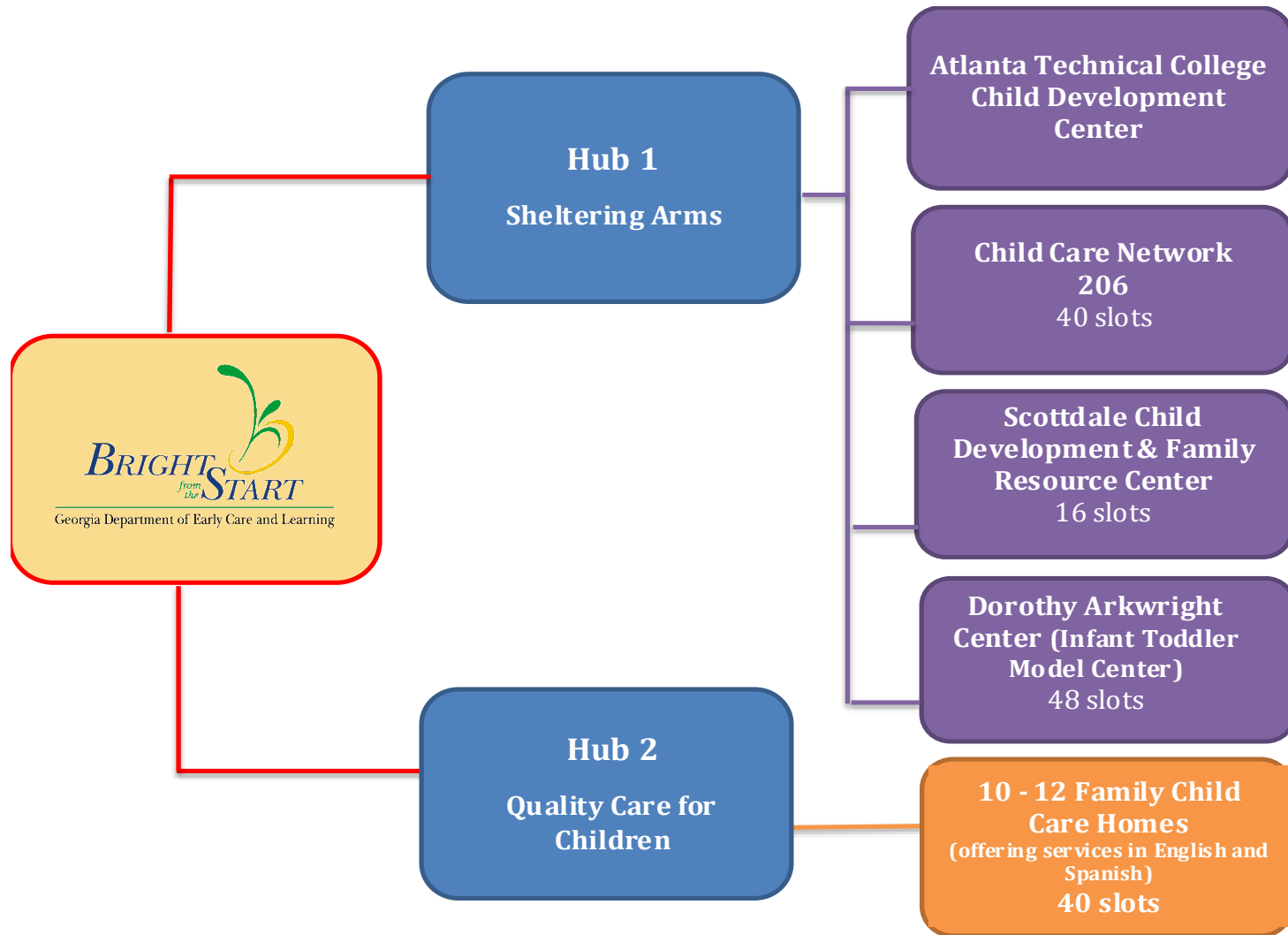
Carol Hartman
Director Policy and System Reform



Bright from the Start: Georgia Department of Early Care and Learning

www.dec.al.ga.gov

The Georgia Early Head Start Partnership Project



Time Line

- August 20, 2014: Grant application submitted
- October 2014 - July 2015: Implementation planning with partners
- March 2015: Grant awards issued
- June - July 2015: Recruit and enroll families
- August 2015: Begin delivering EHS services to families

Lunch

(Served in Entry Area)

Committee Meetings

Programs – Hickory

Budget/Finance – Willow

Ethics – Cypress

(The public is welcome to attend/observe committee meetings but may not participate in the committee's discussion.)

Welcome to the Board of Early Care and Learning

Public Comments

August 21, 2014

Committee Reports

- Budget/Finance

Finance Committee – Budget Request



Department of Early Care and Learning	Current FY15 Budget As of Amendment 3	Proposed AFY15 Budget	Proposed FY16 Budget
BY PROGRAMS			
Child Care Services	\$245,146,508.00	\$245,146,508.00	\$245,146,508.00
Pre-K + (HS)	\$314,475,032.00	\$314,475,032.00	\$314,475,032.00
Quality Initiatives	\$31,087,275.00	\$31,087,275.00	\$31,087,275.00
Nutrition	\$125,550,000.00	\$125,550,000.00	\$125,550,000.00
Total Expenses	\$716,258,815.00	\$716,258,815.00	\$716,258,815.00
BY FUNDING SOURCE			
State General	\$55,493,488.00	\$55,493,488.00	\$55,493,488.00
State Lottery	\$314,300,032.00	\$314,300,032.00	\$314,300,032.00
Federal	\$346,379,295.00	\$346,379,295.00	\$346,379,295.00
Other	\$86,000.00	\$86,000.00	\$86,000.00
Total Funds	\$716,258,815.00	\$716,258,815.00	\$716,258,815.00

Committee Reports *(continued)*

- Programs – Sherron Murphy
- Ethics – Susan Harper



New Board Webpages Demonstration

Craig Detweiler
Chief Information Officer



Remaining Board Meeting Dates 2014

November 13, 2014

Proposed Board Meeting Dates 2015

February 19, 2015

May 14, 2015

August 20, 2015

November 12, 2015